

ARG66857 anti-SLC36A2 / PAT2 antibody

Package: 100 µg
Store at: -20°C

Summary

Product Description	Rabbit Polyclonal antibody recognizes SLC36A2 / PAT2
Tested Reactivity	Hu
Predict Reactivity	Ms, Rat
Tested Application	WB
Host	Rabbit
Clonality	Polyclonal
Isotype	IgG
Target Name	SLC36A2 / PAT2
Species	Human
Immunogen	Synthetic peptide derived from Human SLC36A2 / PAT2.
Conjugation	Un-conjugated
Alternate Names	Proton/amino acid transporter 2; PAT2; Proton-coupled amino acid transporter 2; Solute carrier family 36 member 2; Tramdorin-1; TRAMD1

Application Instructions

Application table	<table><thead><tr><th>Application</th><th>Dilution</th></tr></thead><tbody><tr><td>WB</td><td>1:500 - 1:2000</td></tr></tbody></table>	Application	Dilution	WB	1:500 - 1:2000
Application	Dilution				
WB	1:500 - 1:2000				
Application Note	* The dilutions indicate recommended starting dilutions and the optimal dilutions or concentrations should be determined by the scientist.				
Positive Control	293T				
Observed Size	~ 53 kDa				

Properties

Form	Liquid
Purification	Affinity purification with immunogen.
Buffer	PBS, 0.02% Sodium azide, 50% Glycerol and 0.5% BSA.
Preservative	0.02% Sodium azide
Stabilizer	50% Glycerol and 0.5% BSA
Concentration	1 mg/ml
Storage instruction	For continuous use, store undiluted antibody at 2-8°C for up to a week. For long-term storage, aliquot and store at -20°C. Storage in frost free freezers is not recommended. Avoid repeated freeze/thaw cycles. Suggest spin the vial prior to opening. The antibody solution should be gently mixed before use.

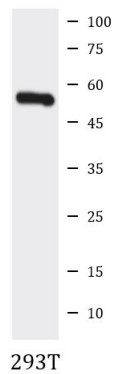
Note

For laboratory research only, not for drug, diagnostic or other use.

Bioinformation

Gene Symbol	SLC36A2
Gene Full Name	solute carrier family 36 (proton/amino acid symporter), member 2
Background	This gene encodes a pH-dependent proton-coupled amino acid transporter that belongs to the amino acid auxin permease 1 protein family. The encoded protein primarily transports small amino acids such as glycine, alanine and proline. Mutations in this gene are associated with iminoglycinuria and hyperglycinuria. [provided by RefSeq, Sep 2010]
Function	Involved in a pH-dependent electrogenic neuronal transport and sequestration of small amino acids. Transports glycine and proline. Inhibited by sarcosine (By similarity). [UniProt]
Calculated Mw	53 kDa
Cellular Localization	Cell membrane; Multi-pass membrane protein. Cytoplasm. [UniProt]

Images



ARG66857 anti-SLC36A2 / PAT2 antibody WB image

Western blot: 293T cell lysate stained with ARG66857 anti-SLC36A2 / PAT2 antibody at 1:1000 dilution, overnight at 4°C.