

ARG66851 anti-Component C1s antibody

Package: 100 µg
Store at: -20°C

Summary

| | |
|---------------------|---|
| Product Description | Rabbit Polyclonal antibody recognizes Component C1s |
| Tested Reactivity | Hu |
| Tested Application | IHC-P, WB |
| Host | Rabbit |
| Clonality | Polyclonal |
| Isotype | IgG |
| Target Name | Component C1s |
| Species | Human |
| Immunogen | Synthetic peptide between aa. 541-590 of Human Component C1s. |
| Conjugation | Un-conjugated |
| Alternate Names | Complement component 1 subcomponent s; EC 3.4.21.42; Complement C1s subcomponent; C1 esterase |

Application Instructions

| Application table | Application | Dilution |
|-------------------|--|----------------|
| | IHC-P | 1:100 - 1:300 |
| | WB | 1:500 - 1:2000 |
| Application Note | * The dilutions indicate recommended starting dilutions and the optimal dilutions or concentrations should be determined by the scientist. | |
| Positive Control | A431 | |
| Observed Size | ~ 90 kDa | |

Properties

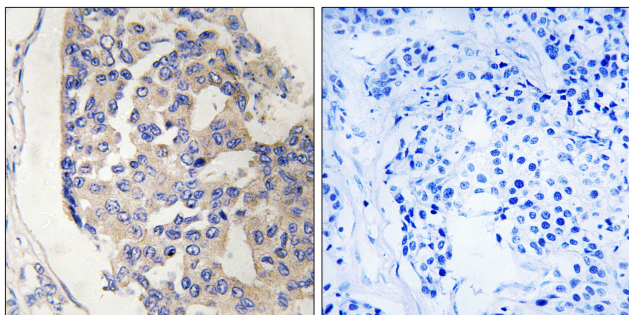
| | |
|---------------------|---|
| Form | Liquid |
| Purification | Affinity purification with immunogen. |
| Buffer | PBS, 0.02% Sodium azide, 50% Glycerol and 0.5% BSA. |
| Preservative | 0.02% Sodium azide |
| Stabilizer | 50% Glycerol and 0.5% BSA |
| Concentration | 1 mg/ml |
| Storage instruction | For continuous use, store undiluted antibody at 2-8°C for up to a week. For long-term storage, aliquot and store at -20°C. Storage in frost free freezers is not recommended. Avoid repeated freeze/thaw cycles. Suggest spin the vial prior to opening. The antibody solution should be gently mixed before use. |

Note For laboratory research only, not for drug, diagnostic or other use.

Bioinformation

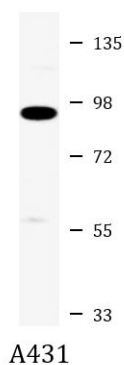
| | |
|----------------|---|
| Gene Symbol | C1S |
| Gene Full Name | complement component 1, s subcomponent |
| Background | This gene encodes a serine protease, which is a major constituent of the human complement subcomponent C1. C1s associates with two other complement components C1r and C1q in order to yield the first component of the serum complement system. Defects in this gene are the cause of selective C1s deficiency. [provided by RefSeq, Mar 2009] |
| Function | C1s B chain is a serine protease that combines with C1q and C1r to form C1, the first component of the classical pathway of the complement system. C1r activates C1s so that it can, in turn, activate C2 and C4. [UniProt] |
| Calculated Mw | 77 kDa |
| PTM | The iron and 2-oxoglutarate dependent 3-hydroxylation of aspartate and asparagine is (R) stereospecific within EGF domains. [UniProt] |

Images



ARG66851 anti-Component C1s antibody IHC-P image

Immunohistochemistry: Paraffin-embedded Human breast carcinoma tissue stained with ARG66851 anti-Component C1s antibody. The picture on the right is blocked with the synthetic peptide.



ARG66851 anti-Component C1s antibody WB image

Western blot: 35 µg of A431 cell lysate stained with ARG66851 anti-Component C1s antibody at 1:1000 dilution.