

## ARG66840 anti-SRCIN1 / p140Cap antibody

Package: 100 µg  
Store at: -20°C

### Summary

Product Description	Rabbit Polyclonal antibody recognizes SRCIN1 / p140Cap
Tested Reactivity	Hu
Predict Reactivity	Ms, Rat
Tested Application	WB
Host	Rabbit
Clonality	Polyclonal
Isotype	IgG
Target Name	SRCIN1 / p140Cap
Species	Human
Immunogen	Synthetic peptide between aa. 811-860 of Human SRCIN1 / p140Cap.
Conjugation	Un-conjugated
Alternate Names	p130Cas-associated protein; SRC kinase signaling inhibitor 1; SNAP-25-interacting protein; p140Cap; SNIP; P140

### Application Instructions

Application table	<table><thead><tr><th>Application</th><th>Dilution</th></tr></thead><tbody><tr><td>WB</td><td>1:500 - 1:2000</td></tr></tbody></table>	Application	Dilution	WB	1:500 - 1:2000
Application	Dilution				
WB	1:500 - 1:2000				
Application Note	* The dilutions indicate recommended starting dilutions and the optimal dilutions or concentrations should be determined by the scientist.				
Positive Control	293T, HeLa and HepG2				
Observed Size	130 ~ 140 kDa				

### Properties

Form	Liquid
Purification	Affinity purification with immunogen.
Buffer	PBS, 0.02% Sodium azide, 50% Glycerol and 0.5% BSA.
Preservative	0.02% Sodium azide
Stabilizer	50% Glycerol and 0.5% BSA
Concentration	1 mg/ml
Storage instruction	For continuous use, store undiluted antibody at 2-8°C for up to a week. For long-term storage, aliquot and store at -20°C. Storage in frost free freezers is not recommended. Avoid repeated freeze/thaw cycles. Suggest spin the vial prior to opening. The antibody solution should be gently mixed before use.

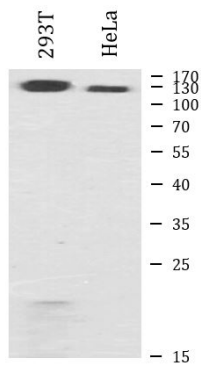
## Bioinformation

---

Gene Symbol	SRCIN1
Gene Full Name	SRC kinase signaling inhibitor 1
Function	Acts as a negative regulator of SRC by activating CSK which inhibits SRC activity and downstream signaling, leading to impaired cell spreading and migration. Regulates dendritic spine morphology. Involved in calcium-dependent exocytosis. May play a role in neurotransmitter release or synapse maintenance. [UniProt]
Calculated Mw	127 kDa
PTM	Tyrosine-phosphorylated in response to EGF and to cell adhesion to integrin ligands. [UniProt]
Cellular Localization	Cytoplasm, cytoskeleton. Cell projection, axon, dendrite. Cell junction, synapse, postsynaptic cell membrane, postsynaptic density. Note=Localized to the perinuclear region, lamellopodia, cortical actin and actin stress fibers but not to focal adhesions. Strongly expressed in axons and dendrites of the CA1 and CA3 hippocampal regions and of the dentate gyrus. Detected in both presynapses and postsynapses and in postsynaptic density fractions. [UniProt]

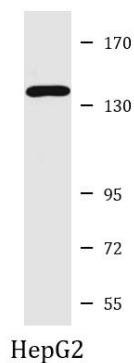
---

## Images



ARG66840 anti-SRCIN1 / p140Cap antibody WB image

Western blot: 293T and HeLa cell lysates stained with ARG66840 anti-SRCIN1 / p140Cap antibody at 1:500 dilution.



ARG66840 anti-SRCIN1 / p140Cap antibody WB image

Western blot: HepG2 cell lysate stained with ARG66840 anti-SRCIN1 / p140Cap antibody at 1:500 dilution.