

## ARG66805 anti-Cytokeratin 1 antibody [SQab20218]

Package: 100 µl  
Store at: -20°C

### Summary

|                     |  |
|---------------------|--|
| Product Description | Recombinant Rabbit Monoclonal antibody [SQab20218] recognizes Cytokeratin 1  |
| Tested Reactivity   | Hu   |
| Tested Application  | IHC-P  |
| Host                | Rabbit   |
| Clonality           | Monoclonal   |
| Clone               | SQab20218  |
| Isotype             | IgG  |
| Target Name         | Cytokeratin 1  |
| Species             | Human  |
| Immunogen           | Human Cytokeratin 1.   |
| Conjugation         | Un-conjugated  |
| Alternate Names     | 67 kDa cytokeratin; KRT1A; EPPK; Keratin, type II cytoskeletal 1; EHK1; K1; Keratin-1; CK1; Cytokeratin-1; Hair alpha protein; Type-II keratin Kb1; CK-1; NEPPK; EHK |

### Application Instructions

| Application table | Application | Dilution      |
|-------------------|-------------|---------------|
|                   | IHC-P       | 1:100 - 1:200 |

**Application Note**  
IHC-P: Antigen Retrieval: Heat mediation was performed in Tris/EDTA buffer (pH 9.0), primary antibody incubate at RT (18°C - 25°C) for 30 minutes.  
\* The dilutions indicate recommended starting dilutions and the optimal dilutions or concentrations should be determined by the scientist.

### Properties

|                     |   |
|---------------------|---|
| Form                | Liquid  |
| Purification        | Purification with Protein A.  |
| Buffer              | PBS, 0.01% Sodium azide, 40% Glycerol and 0.05% BSA.  |
| Preservative        | 0.01% Sodium azide  |
| Stabilizer          | 40% Glycerol and 0.05% BSA  |
| Storage instruction | For continuous use, store undiluted antibody at 2-8°C for up to a week. For long-term storage, aliquot and store at -20°C. Storage in frost free freezers is not recommended. Avoid repeated freeze/thaw cycles. Suggest spin the vial prior to opening. The antibody solution should be gently mixed before use. |
| Note                | For laboratory research only, not for drug, diagnostic or other use.  |

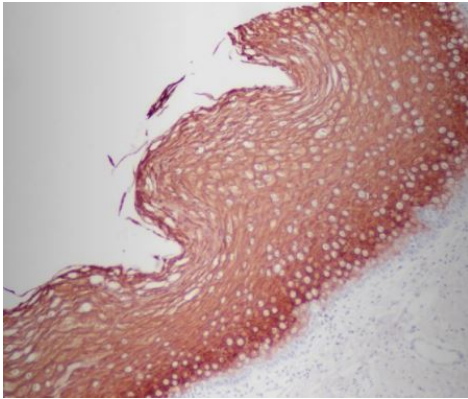
## Bioinformation

---

|                       |   |
|-----------------------|---|
| Gene Symbol           | KRT1  |
| Gene Full Name        | keratin 1, type II  |
| Background            | The protein encoded by this gene is a member of the keratin gene family. The type II cytokeratins consist of basic or neutral proteins which are arranged in pairs of heterotypic keratin chains coexpressed during differentiation of simple and stratified epithelial tissues. This type II cytokeratin is specifically expressed in the spinous and granular layers of the epidermis with family member KRT10 and mutations in these genes have been associated with bullous congenital ichthyosiform erythroderma. The type II cytokeratins are clustered in a region of chromosome 12q12-q13. [provided by RefSeq, Jul 2008] |
| Function              | May regulate the activity of kinases such as PKC and SRC via binding to integrin beta-1 (ITB1) and the receptor of activated protein C kinase 1 (RACK1). In complex with C1QBP is a high affinity receptor for kininogen-1/HMWK. [UniProt]  |
| Calculated Mw         | 66 kDa  |
| PTM                   | Undergoes deimination of some arginine residues (citrullination). [UniProt]   |
| Cellular Localization | Cell membrane. Note=Located on plasma membrane of neuroblastoma NMB7 cells. [UniProt]   |

## Images

---



ARG66805 anti-Cytokeratin 1 antibody [SQab20218] IHC-P image

Immunohistochemistry: Formalin/PFA-fixed and paraffin-embedded Human cervix tissue. Antigen Retrieval: Heat mediation was performed in Tris/EDTA buffer (pH 9.0). The tissue section was stained with ARG66805 anti-Cytokeratin 1 antibody [SQab20218].