

## ARG66799 anti-MAS1L antibody

Package: 100 µl  
Store at: -20°C

### Summary

Product Description	Rabbit Polyclonal antibody recognizes MAS1L
Tested Reactivity	Hu, Ms, Rat
Tested Application	WB
Host	Rabbit
Clonality	Polyclonal
Isotype	IgG
Target Name	MAS1L
Species	Human
Immunogen	KLH-conjugated synthetic peptide within the center region of Human MAS1L.
Conjugation	Un-conjugated
Alternate Names	MAS-L; Mas-related G-protein coupled receptor MRG; dJ994E9.2; MRG; MAS-R; MAS1-like

### Application Instructions

Application table	Application	Dilution
	WB	1:500 - 1:1000
Application Note	* The dilutions indicate recommended starting dilutions and the optimal dilutions or concentrations should be determined by the scientist.	
Observed Size	~ 39 kDa	

### Properties

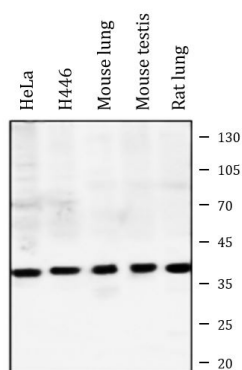
Form	Liquid
Purification	Affinity purification with immunogen.
Buffer	0.42% Potassium phosphate (pH 7.3), 0.87% NaCl, 0.01% Sodium azide and 30% Glycerol.
Preservative	0.01% Sodium azide
Stabilizer	30% Glycerol
Storage instruction	For continuous use, store undiluted antibody at 2-8°C for up to a week. For long-term storage, aliquot and store at -20°C. Storage in frost free freezers is not recommended. Avoid repeated freeze/thaw cycles. Suggest spin the vial prior to opening. The antibody solution should be gently mixed before use.
Note	For laboratory research only, not for drug, diagnostic or other use.

### Bioinformation

Gene Symbol	MAS1L
Gene Full Name	MAS1 proto-oncogene like, G protein-coupled receptor
Calculated Mw	42 kDa
Cellular Localization	Cell membrane; Multi-pass membrane protein. [UniProt]

## Images

---



ARG66799 anti-MAS1L antibody WB image

Western blot: HeLa, H446, Mouse lung, Mouse testis and Rat lung lysates stained with ARG66799 anti-MAS1L antibody.