

ARG66720 anti-EXOG / ENDOGL1 antibody

Package: 100 µg
Store at: -20°C

Summary

Product Description	Rabbit Polyclonal antibody recognizes EXOG / ENDOGL1
Tested Reactivity	Hu
Tested Application	WB
Host	Rabbit
Clonality	Polyclonal
Isotype	IgG
Target Name	EXOG / ENDOGL1
Species	Human
Immunogen	Synthetic peptide corresponding to aa. 171-220 of Human EXOG / ENDOGL1.
Conjugation	Un-conjugated
Alternate Names	ENGL-a; ENGL-b; ENGLA; ENGLB; Nuclease EXOG, mitochondrial; ENDOGL2; ENDOGL1; Endonuclease G-like 1; ENGL; EC 3.1.30.-; Endo G-like 1

Application Instructions

Application table	Application	Dilution
	WB	1:500 - 1:2000
Application Note	* The dilutions indicate recommended starting dilutions and the optimal dilutions or concentrations should be determined by the scientist.	
Observed Size	~ 40 kDa	

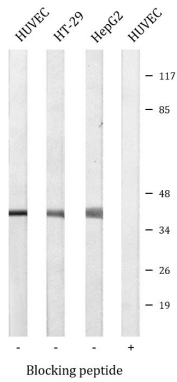
Properties

Form	Liquid
Purification	Affinity purification with immunogen.
Buffer	PBS, 0.02% Sodium azide, 50% Glycerol and 0.5% BSA.
Preservative	0.02% Sodium azide
Stabilizer	50% Glycerol and 0.5% BSA
Concentration	1 mg/ml
Storage instruction	For continuous use, store undiluted antibody at 2-8°C for up to a week. For long-term storage, aliquot and store at -20°C. Storage in frost free freezers is not recommended. Avoid repeated freeze/thaw cycles. Suggest spin the vial prior to opening. The antibody solution should be gently mixed before use.
Note	For laboratory research only, not for drug, diagnostic or other use.

Bioinformation

Gene Symbol	EXOG
Gene Full Name	endo/exonuclease (5'-3'), endonuclease G-like
Background	This gene encodes an endo/exonuclease with 5'-3' exonuclease activity. The encoded enzyme catalyzes the hydrolysis of ester linkages at the 5' end of a nucleic acid chain. This enzyme is localized to the mitochondria and may play a role in programmed cell death. Alternatively spliced transcript variants have been described. A pseudogene exists on chromosome 18. [provided by RefSeq, Feb 2009]
Function	Endo/exonuclease with nicking activity towards supercoiled DNA, a preference for single-stranded DNA and 5'-3' exonuclease activity. [UniProt]
Calculated Mw	41 kDa
Cellular Localization	Mitochondrion inner membrane. [UniProt]

Images



ARG66720 anti-EXOG / ENDOGL1 antibody WB image

Western blot: HUVEC, HT-29 and HepG2 cell lysates stained with ARG66720 anti-EXOG / ENDOGL1 antibody. The lane on the right is blocked with the synthetic peptide.