

## ARG66702 anti-PDGF BB antibody

Package: 100 µg  
Store at: -20°C

### Summary

Product Description	Rabbit Polyclonal antibody recognizes PDGF BB
Tested Reactivity	Ms, Rat
Tested Application	IHC-P
Host	Rabbit
Clonality	Polyclonal
Isotype	IgG
Target Name	PDGF BB
Species	Human
Immunogen	Synthetic peptide within aa. 30-110 of Human PDGF BB.
Conjugation	Un-conjugated
Alternate Names	SIS; Becaplermin; Platelet-derived growth factor subunit B; IBGC5; PDGF subunit B; c-sis; SSV; PDGF-2; Proto-oncogene c-Sis; Platelet-derived growth factor beta polypeptide; PDGF2; Platelet-derived growth factor B chain

### Application Instructions

Application table	Application	Dilution
	IHC-P	1:100 - 1:300
Application Note	IHC-P: Antigen Retrieval: Heat mediated Sodium citrate buffer (pH 6.0) for 20 min. * The dilutions indicate recommended starting dilutions and the optimal dilutions or concentrations should be determined by the scientist.	

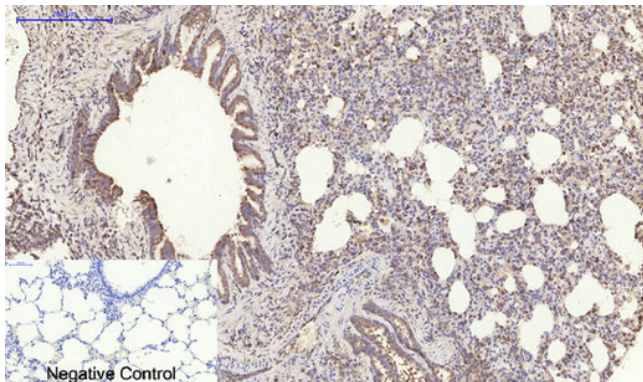
### Properties

Form	Liquid
Purification	Affinity purification with immunogen.
Buffer	PBS, 0.02% Sodium azide, 50% Glycerol and 0.5% BSA.
Preservative	0.02% Sodium azide
Stabilizer	50% Glycerol and 0.5% BSA
Concentration	1 mg/ml
Storage instruction	For continuous use, store undiluted antibody at 2-8°C for up to a week. For long-term storage, aliquot and store at -20°C. Storage in frost free freezers is not recommended. Avoid repeated freeze/thaw cycles. Suggest spin the vial prior to opening. The antibody solution should be gently mixed before use.
Note	For laboratory research only, not for drug, diagnostic or other use.

## Bioinformation

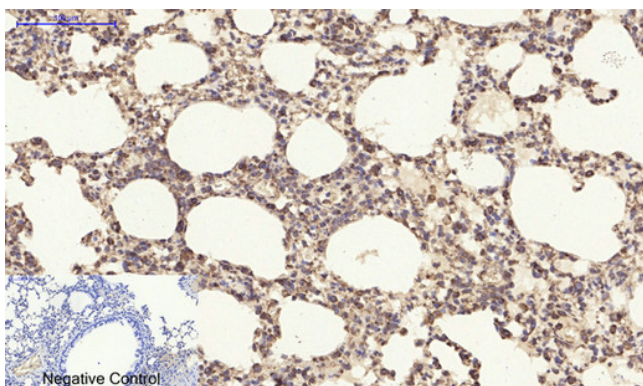
Gene Symbol	PDGFB
Gene Full Name	platelet-derived growth factor beta polypeptide
Background	The protein encoded by this gene is a member of the platelet-derived growth factor family. The four members of this family are mitogenic factors for cells of mesenchymal origin and are characterized by a motif of eight cysteines. This gene product can exist either as a homodimer (PDGF-BB) or as a heterodimer with the platelet-derived growth factor alpha polypeptide (PDGF-AB), where the dimers are connected by disulfide bonds. Mutations in this gene are associated with meningioma. Reciprocal translocations between chromosomes 22 and 17, at sites where this gene and that for collagen type 1, alpha 1 are located, are associated with a particular type of skin tumor called dermatofibrosarcoma protuberans resulting from unregulated expression of growth factor. Two alternatively spliced transcript variants encoding different isoforms have been identified for this gene. [provided by RefSeq, Feb 2013]
Function	Growth factor that plays an essential role in the regulation of embryonic development, cell proliferation, cell migration, survival and chemotaxis. Potent mitogen for cells of mesenchymal origin. Required for normal proliferation and recruitment of pericytes and vascular smooth muscle cells in the central nervous system, skin, lung, heart and placenta. Required for normal blood vessel development, and for normal development of kidney glomeruli. Plays an important role in wound healing. Signaling is modulated by the formation of heterodimers with PDGFA (By similarity). [UniProt]
Calculated Mw	27 kDa
Cellular Localization	Secreted. Note=Released by platelets upon wounding. [UniProt]

## Images



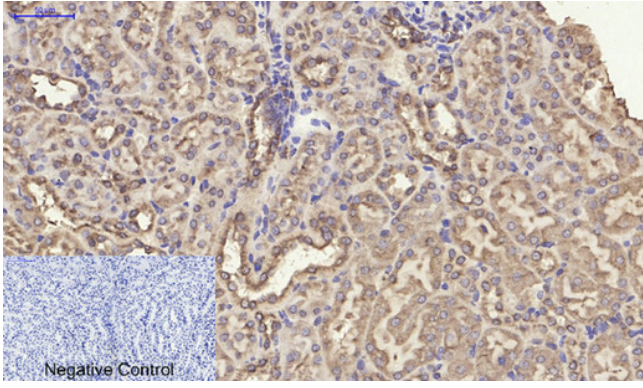
ARG66702 anti-PDGF B antibody IHC-P image

Immunohistochemistry: Paraffin-embedded Rat lung tissue. Antigen Retrieval: Heat mediated Sodium citrate buffer (pH 6.0) for 20 min. The tissue section was stained with ARG66702 anti-PDGF B antibody at 1:200 dilution, overnight at 4°C. Negative control was used by secondary antibody only.



ARG66702 anti-PDGF B antibody IHC-P image

Immunohistochemistry: Paraffin-embedded Mouse lung tissue. Antigen Retrieval: Heat mediated Sodium citrate buffer (pH 6.0) for 20 min. The tissue section was stained with ARG66702 anti-PDGF B antibody at 1:200 dilution, overnight at 4°C. Negative control was used by secondary antibody only.



#### ARG66702 anti-PDGF B antibody IHC-P image

Immunohistochemistry: Paraffin-embedded Mouse kidney tissue. Antigen Retrieval: Heat mediated Sodium citrate buffer (pH 6.0) for 20 min. The tissue section was stained with ARG66702 anti-PDGF B antibody at 1:200 dilution, overnight at 4°C. Negative control was used by secondary antibody only.