

ARG66694 anti-ANGPTL1 / ARP1 antibody

Package: 100 µg
Store at: -20°C

Summary

Product Description	Rabbit Polyclonal antibody recognizes ANGPTL1 / ARP1
Tested Reactivity	Hu, Ms
Predict Reactivity	Rat
Tested Application	IHC-P, WB
Host	Rabbit
Clonality	Polyclonal
Isotype	IgG
Target Name	ANGPTL1 / ARP1
Species	Human
Immunogen	Synthetic peptide around the internal region of Human ANGPTL1 / ARP1.
Conjugation	Un-conjugated
Alternate Names	dJ595C2.2; Angiotensin-like protein 1; Angiotensin-3; UNQ162; ANG-3; Angiotensin-related protein 1; ANG3; ANGPT3; ARP1; AngY

Application Instructions

Application table	Application	Dilution
	IHC-P	1:100 - 1:300
	WB	1:500 - 1:2000
Application Note	* The dilutions indicate recommended starting dilutions and the optimal dilutions or concentrations should be determined by the scientist.	
Observed Size	~ 57 kDa	

Properties

Form	Liquid
Purification	Affinity purification with immunogen.
Buffer	PBS, 0.02% Sodium azide, 50% Glycerol and 0.5% BSA.
Preservative	0.02% Sodium azide
Stabilizer	50% Glycerol and 0.5% BSA
Concentration	1 mg/ml
Storage instruction	For continuous use, store undiluted antibody at 2-8°C for up to a week. For long-term storage, aliquot and store at -20°C. Storage in frost free freezers is not recommended. Avoid repeated freeze/thaw cycles. Suggest spin the vial prior to opening. The antibody solution should be gently mixed before use.

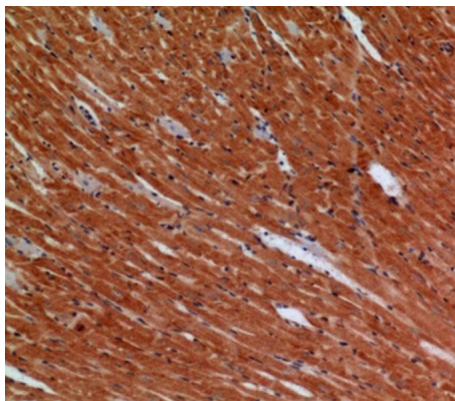
Note

For laboratory research only, not for drug, diagnostic or other use.

Bioinformation

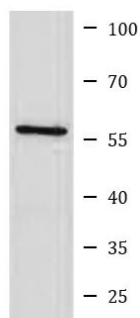
Gene Symbol	ANGPTL1
Gene Full Name	angiopoietin-like 1
Background	Angiopoietins are members of the vascular endothelial growth factor family and the only known growth factors largely specific for vascular endothelium. Angiopoietin-1, angiopoietin-2, and angiopoietin-4 participate in the formation of blood vessels. The protein encoded by this gene is another member of the angiopoietin family that is widely expressed in adult tissues with mRNA levels highest in highly vascularized tissues. This protein was found to be a secretory protein that does not act as an endothelial cell mitogen in vitro. [provided by RefSeq, Jul 2008]
Calculated Mw	57 kDa
Cellular Localization	Secreted. [UniProt]

Images



ARG66694 anti-ANGPTL1 / ARP1 antibody IHC-P image

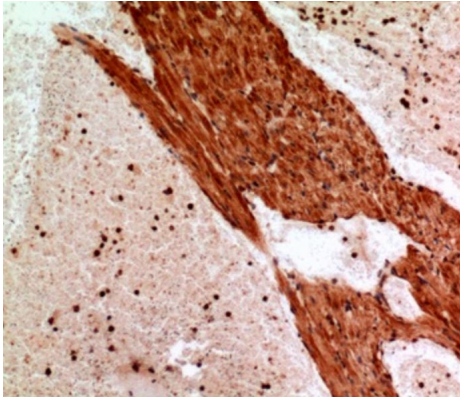
Immunohistochemistry: Paraffin-embedded Mouse heart tissue stained with ARG66694 anti-ANGPTL1 / ARP1 antibody at 1:100 dilution.



K562

ARG66694 anti-ANGPTL1 / ARP1 antibody WB image

Western blot: K562 cell lysate stained with ARG66694 anti-ANGPTL1 / ARP1 antibody.



ARG66694 anti-ANGPTL1 / ARP1 antibody IHC-P image

Immunohistochemistry: Paraffin-embedded Mouse heart tissue stained with ARG66694 anti-ANGPTL1 / ARP1 antibody at 1:100 dilution.