

ARG66627 anti-RASGRF1 / CDC25 phospho (Ser916) antibody

Package: 100 µg
Store at: -20°C

Summary

| | |
|---------------------|---|
| Product Description | Rabbit Polyclonal antibody recognizes RASGRF1 / CDC25 phospho (Ser916) |
| Tested Reactivity | Hu |
| Tested Application | IHC-P |
| Host | Rabbit |
| Clonality | Polyclonal |
| Isotype | IgG |
| Target Name | RASGRF1 / CDC25 |
| Species | Human |
| Immunogen | Phosphospecific peptide around Ser916 of Human RASGRF1 / CDC25. |
| Conjugation | Un-conjugated |
| Alternate Names | CDC25L; Ras-specific guanine nucleotide-releasing factor 1; CDC25; GRF1; PP13187; GRF55; H-GRF55; Ras-specific nucleotide exchange factor CDC25; Guanine nucleotide-releasing protein; Ras-GRF1; GNRP; ras-GRF1 |

Application Instructions

| Application table | Application | Dilution |
|-------------------|--|---------------|
| | IHC-P | 1:100 - 1:300 |
| Application Note | * The dilutions indicate recommended starting dilutions and the optimal dilutions or concentrations should be determined by the scientist. | |

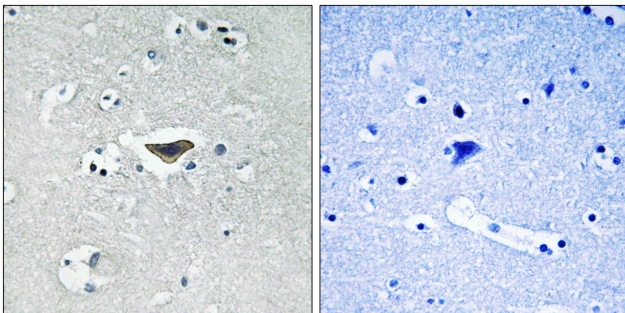
Properties

| | |
|---------------------|---|
| Form | Liquid |
| Purification | Affinity purification with immunogen. |
| Buffer | PBS, 0.02% Sodium azide, 50% Glycerol and 0.5% BSA. |
| Preservative | 0.02% Sodium azide |
| Stabilizer | 50% Glycerol and 0.5% BSA |
| Concentration | 1 mg/ml |
| Storage instruction | For continuous use, store undiluted antibody at 2-8°C for up to a week. For long-term storage, aliquot and store at -20°C. Storage in frost free freezers is not recommended. Avoid repeated freeze/thaw cycles. Suggest spin the vial prior to opening. The antibody solution should be gently mixed before use. |
| Note | For laboratory research only, not for drug, diagnostic or other use. |

Bioinformation

| | |
|----------------|--|
| Gene Symbol | RASGRF1 |
| Gene Full Name | Ras protein-specific guanine nucleotide-releasing factor 1 |
| Background | The protein encoded by this gene is a guanine nucleotide exchange factor (GEF) similar to the <i>Saccharomyces cerevisiae</i> CDC25 gene product. Functional analysis has demonstrated that this protein stimulates the dissociation of GDP from RAS protein. The studies of the similar gene in mouse suggested that the Ras-GEF activity of this protein in brain can be activated by Ca ²⁺ influx, muscarinic receptors, and G protein beta-gamma subunit. Mouse studies also indicated that the Ras-GEF signaling pathway mediated by this protein may be important for long-term memory. Alternatively spliced transcript variants encoding distinct isoforms have been reported. [provided by RefSeq, Mar 2009] |
| Function | Promotes the exchange of Ras-bound GDP by GTP. [UniProt] |
| Calculated Mw | 145 kDa |
| PTM | Phosphorylated by PLK2, leading to ubiquitination and degradation by the proteasome. Ubiquitinated and degraded following phosphorylation by PLK2. Phosphorylated by SRC and LCK. Phosphorylation by LCK increases its capacity to stimulate the GDP/GTP exchange on Ras, whereas its phosphorylation by SRC seems not to have an effect on stimulation activity. [UniProt] |

Images



ARG66627 anti-RASGRF1 / CDC25 phospho (Ser916) antibody IHC-P image

Immunohistochemistry: Paraffin-embedded Human brain tissue stained with ARG66627 anti-RASGRF1 / CDC25 phospho (Ser916) antibody. The picture on the right is blocked with the phospho peptide.