

## ARG66622 anti-EDIL3 antibody

Package: 100 µl  
Store at: -20°C

### Summary

Product Description	Rabbit Polyclonal antibody recognizes EDIL3
Tested Reactivity	Hu
Tested Application	IHC-P, WB
Host	Rabbit
Clonality	Polyclonal
Isotype	IgG
Target Name	EDIL3
Species	Human
Immunogen	Recombinant full length protein of Human EDIL3.
Conjugation	Un-conjugated
Alternate Names	DEL1; EGF-like repeat and discoidin I-like domain-containing protein 3; Integrin-binding protein DEL1; Developmentally-regulated endothelial cell locus 1 protein

### Application Instructions

Application table	Application	Dilution
	IHC-P	1:50 - 1:200
	WB	1:500 - 1:2000
Application Note	IHC-P: Antigen Retrieval: Heat mediation was performed in Sodium citrate buffer (pH 6.0). * The dilutions indicate recommended starting dilutions and the optimal dilutions or concentrations should be determined by the scientist.	
Observed Size	54 kDa	

### Properties

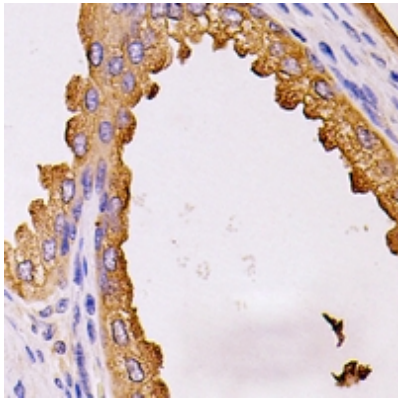
Form	Liquid
Purification	Affinity purification with immunogen.
Buffer	0.42% Potassium phosphate (pH 7.3), 0.87% NaCl, 0.01% Sodium azide and 30% Glycerol.
Preservative	0.01% Sodium azide
Stabilizer	30% Glycerol
Storage instruction	For continuous use, store undiluted antibody at 2-8°C for up to a week. For long-term storage, aliquot and store at -20°C. Storage in frost free freezers is not recommended. Avoid repeated freeze/thaw cycles. Suggest spin the vial prior to opening. The antibody solution should be gently mixed before use.
Note	For laboratory research only, not for drug, diagnostic or other use.

## Bioinformation

---

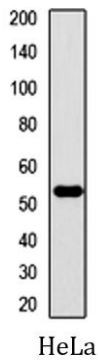
Gene Symbol	EDIL3
Gene Full Name	EGF-like repeats and discoidin I-like domains 3
Background	The protein encoded by this gene is an integrin ligand. It plays an important role in mediating angiogenesis and may be important in vessel wall remodeling and development. It also influences endothelial cell behavior. [provided by RefSeq, Jul 2008]
Function	Promotes adhesion of endothelial cells through interaction with the alpha-v/beta-3 integrin receptor. Inhibits formation of vascular-like structures. May be involved in regulation of vascular morphogenesis of remodeling in embryonic development. [UniProt]
Calculated Mw	54 kDa
Cellular Localization	Secreted. [UniProt]

## Images



ARG66622 anti-EDIL3 antibody IHC-P image

Immunohistochemistry: Formalin-fixed and paraffin-embedded Human prostate cancer tissue section. Antigen Retrieval: Heat mediation was performed in Sodium citrate buffer (pH 6.0). The section was then stained with ARG66622 anti-EDIL3 antibody at room temperature and detected using an HRP conjugated compact polymer system. DAB was used as the chromogen. The section was then counterstained with haematoxylin and mounted with DPX.



ARG66622 anti-EDIL3 antibody WB image

Western blot: HeLa whole cell lysate stained with ARG66622 anti-EDIL3 antibody.