

ARG66620 anti-H6PD antibody

Package: 100 µl
Store at: -20°C

Summary

Product Description	Rabbit Polyclonal antibody recognizes H6PD
Tested Reactivity	Ms
Tested Application	WB
Host	Rabbit
Clonality	Polyclonal
Isotype	IgG
Target Name	H6PD
Species	Human
Immunogen	Recombinant full length protein of Human H6PD.
Conjugation	Un-conjugated
Alternate Names	G6PDH; Hexose-6-phosphate dehydrogenase; EC 3.1.1.31; EC 1.1.1.47; GDH; 6PGL; CORTRD1; GDH/6PGL endoplasmic bifunctional protein [Includes: Glucose 1-dehydrogenase

Application Instructions

Application table	Application	Dilution
	WB	1:500 - 1:2000
Application Note	* The dilutions indicate recommended starting dilutions and the optimal dilutions or concentrations should be determined by the scientist.	
Observed Size	~ 90 kDa	

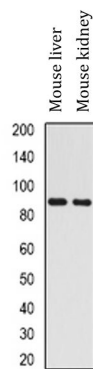
Properties

Form	Liquid
Purification	Affinity purification with immunogen.
Buffer	0.42% Potassium phosphate (pH 7.3), 0.87% NaCl, 0.01% Sodium azide and 30% Glycerol.
Preservative	0.01% Sodium azide
Stabilizer	30% Glycerol
Storage instruction	For continuous use, store undiluted antibody at 2-8°C for up to a week. For long-term storage, aliquot and store at -20°C. Storage in frost free freezers is not recommended. Avoid repeated freeze/thaw cycles. Suggest spin the vial prior to opening. The antibody solution should be gently mixed before use.
Note	For laboratory research only, not for drug, diagnostic or other use.

Bioinformation

Gene Symbol	H6PD
Gene Full Name	hexose-6-phosphate dehydrogenase (glucose 1-dehydrogenase)
Background	There are 2 forms of glucose-6-phosphate dehydrogenase. G form is X-linked and H form, encoded by this gene, is autosomally linked. This H form shows activity with other hexose-6-phosphates, especially galactose-6-phosphate, whereas the G form is specific for glucose-6-phosphate. Both forms are present in most tissues, but H form is not found in red cells. [provided by RefSeq, Jul 2008]
Function	Oxidizes glucose-6-phosphate and glucose, as well as other hexose-6-phosphates. [UniProt]
Calculated Mw	89 kDa
Cellular Localization	Endoplasmic reticulum lumen. Note=Microsomes, endoplasmic reticulum lumen. [UniProt]

Images



ARG66620 anti-H6PD antibody WB image

Western blot: Mouse liver and Mouse kidney lysates stained with ARG66620 anti-H6PD antibody.