

ARG66615 anti-SCAMP1 antibody

Package: 100 µg
Store at: -20°C

Summary

Product Description	Rabbit Polyclonal antibody recognizes SCAMP1
Tested Reactivity	Hu
Predict Reactivity	Ms, Rat
Tested Application	WB
Host	Rabbit
Clonality	Polyclonal
Isotype	IgG
Target Name	SCAMP1
Species	Human
Immunogen	Synthetic peptide within aa. 250-330 of Human SCAMP1.
Conjugation	Un-conjugated
Alternate Names	SCAMP37; Secretory carrier membrane protein 1; SCAMP; Secretory carrier-associated membrane protein 1

Application Instructions

Application table	Application	Dilution
	WB	1:500 - 1:2000
Application Note	* The dilutions indicate recommended starting dilutions and the optimal dilutions or concentrations should be determined by the scientist.	
Observed Size	~ 38 kDa	

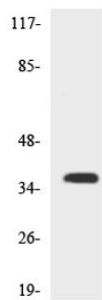
Properties

Form	Liquid
Purification	Affinity purification with immunogen.
Buffer	PBS, 0.02% Sodium azide, 50% Glycerol and 0.5% BSA.
Preservative	0.02% Sodium azide
Stabilizer	50% Glycerol and 0.5% BSA
Concentration	1 mg/ml
Storage instruction	For continuous use, store undiluted antibody at 2-8°C for up to a week. For long-term storage, aliquot and store at -20°C. Storage in frost free freezers is not recommended. Avoid repeated freeze/thaw cycles. Suggest spin the vial prior to opening. The antibody solution should be gently mixed before use.
Note	For laboratory research only, not for drug, diagnostic or other use.

Bioinformation

Gene Symbol	SCAMP1
Gene Full Name	secretory carrier membrane protein 1
Background	This gene product belongs to the SCAMP family of proteins, which are secretory carrier membrane proteins. They function as carriers to the cell surface in post-golgi recycling pathways. Different family members are highly related products of distinct genes, and are usually expressed together. These findings suggest that these protein family members may function at the same site during vesicular transport rather than in separate pathways. A pseudogene of this gene has been defined on chromosome 1. Alternative splicing results in multiple transcript variants. [provided by RefSeq, Mar 2014]
Function	Functions in post-Golgi recycling pathways. Acts as a recycling carrier to the cell surface. [UniProt]
Calculated Mw	38 kDa
Cellular Localization	Golgi apparatus, trans-Golgi network membrane; Multi-pass membrane protein. Recycling endosome membrane; Multi-pass membrane protein. [UniProt]

Images



HeLa

ARG66615 anti-SCAMP1 antibody WB image

Western blot: HeLa cell lysate stained with ARG66615 anti-SCAMP1 antibody.