

ARG66612
anti-RCL1 antibodyPackage: 100 µg
Store at: -20°C

Summary

Product Description	Rabbit Polyclonal antibody recognizes RCL1
Tested Reactivity	Hu
Tested Application	WB
Host	Rabbit
Clonality	Polyclonal
Isotype	IgG
Target Name	RCL1
Species	Human
Immunogen	Synthetic peptide within aa. 300-380 of Human RCL1.
Conjugation	Un-conjugated
Alternate Names	RPCL1; RNAC; RNA 3'-terminal phosphate cyclase-like protein

Application Instructions

Application table	Application	Dilution
	WB	1:500 - 1:2000
Application Note	* The dilutions indicate recommended starting dilutions and the optimal dilutions or concentrations should be determined by the scientist.	
Observed Size	41 kDa	

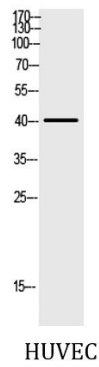
Properties

Form	Liquid
Purification	Affinity purification with immunogen.
Buffer	PBS, 0.02% Sodium azide, 50% Glycerol and 0.5% BSA.
Preservative	0.02% Sodium azide
Stabilizer	50% Glycerol and 0.5% BSA
Concentration	1 mg/ml
Storage instruction	For continuous use, store undiluted antibody at 2-8°C for up to a week. For long-term storage, aliquot and store at -20°C. Storage in frost free freezers is not recommended. Avoid repeated freeze/thaw cycles. Suggest spin the vial prior to opening. The antibody solution should be gently mixed before use.
Note	For laboratory research only, not for drug, diagnostic or other use.

Bioinformation

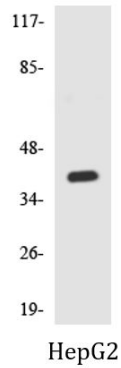
Gene Symbol	RCL1
Gene Full Name	RNA terminal phosphate cyclase-like 1
Function	Does not have cyclase activity. Plays a role in 40S-ribosomal-subunit biogenesis in the early pre-rRNA processing steps at sites A0, A1 and A2 that are required for proper maturation of the 18S RNA (By similarity). [UniProt]
Calculated Mw	41 kDa
Cellular Localization	Nucleus, nucleolus. [UniProt]

Images



ARG66612 anti-RCL1 antibody WB image

Western blot: HUVEC cell nucleus lysate stained with ARG66612 anti-RCL1 antibody.



ARG66612 anti-RCL1 antibody WB image

Western blot: HepG2 cell lysate stained with ARG66612 anti-RCL1 antibody.