

ARG66594 anti-GPR52 antibody

Package: 100 µg
Store at: -20°C

Summary

Product Description	Rabbit Polyclonal antibody recognizes GPR52
Tested Reactivity	Hu, Ms
Tested Application	WB
Host	Rabbit
Clonality	Polyclonal
Isotype	IgG
Target Name	GPR52
Species	Human
Immunogen	Synthetic peptide corresponding to aa. 270-350 of Human GPR52.
Conjugation	Un-conjugated
Alternate Names	Probable G-protein coupled receptor 52

Application Instructions

Application table	Application	Dilution
	WB	1:500 - 1:2000
Application Note	* The dilutions indicate recommended starting dilutions and the optimal dilutions or concentrations should be determined by the scientist.	
Observed Size	40 kDa	

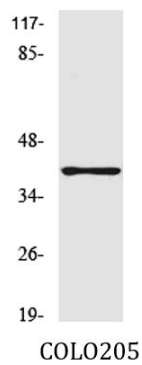
Properties

Form	Liquid
Purification	Affinity purification with immunogen.
Buffer	PBS, 0.02% Sodium azide, 50% Glycerol and 0.5% BSA.
Preservative	0.02% Sodium azide
Stabilizer	50% Glycerol and 0.5% BSA
Concentration	1 mg/ml
Storage instruction	For continuous use, store undiluted antibody at 2-8°C for up to a week. For long-term storage, aliquot and store at -20°C. Storage in frost free freezers is not recommended. Avoid repeated freeze/thaw cycles. Suggest spin the vial prior to opening. The antibody solution should be gently mixed before use.
Note	For laboratory research only, not for drug, diagnostic or other use.

Bioinformation

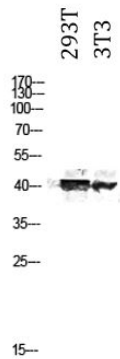
Gene Symbol	GPR52
Gene Full Name	G protein-coupled receptor 52
Background	Members of the G protein-coupled receptor (GPR) family play important roles in signal transduction from the external environment to the inside of the cell.[supplied by OMIM, Jul 2002]
Function	Orphan receptor. [UniProt]
Calculated Mw	41 kDa
Cellular Localization	Cell membrane; Multi-pass membrane protein. [UniProt]

Images



ARG66594 anti-GPR52 antibody WB image

Western blot: COLO205 cell lysate stained with ARG66594 anti-GPR52 antibody at 1:2000 dilution.



ARG66594 anti-GPR52 antibody WB image

Western blot: 293T and 3T3 cell lysates stained with ARG66594 anti-GPR52 antibody at 1:2000 dilution.