

## ARG66500 anti-SCGB2A2 / Mammaglobin A antibody

Package: 100 µl  
Store at: -20°C

### Summary

Product Description	Mouse Monoclonal antibody recognizes SCGB2A2 / Mammaglobin A
Tested Reactivity	Hu
Tested Application	IHC-P
Host	Mouse
Clonality	Monoclonal
Isotype	IgG1, kappa
Target Name	SCGB2A2 / Mammaglobin A
Species	Human
Immunogen	Synthetic peptide derived from Human SCGB2A2 / Mammaglobin A.
Conjugation	Un-conjugated
Alternate Names	UGB2; Secretoglobin family 2A member 2; MGB1; Mammaglobin-A; Mammaglobin-1

### Application Instructions

Application table	Application	Dilution
	IHC-P	1:100 - 1:500

**Application Note** IHC-P: Antigen Retrieval: Tris/EDTA buffer (pH 8.0) was used.  
\* The dilutions indicate recommended starting dilutions and the optimal dilutions or concentrations should be determined by the scientist.

### Properties

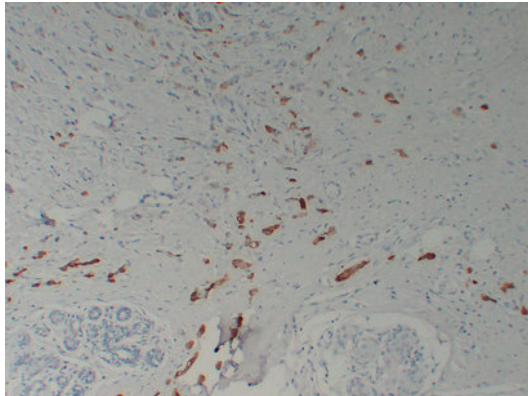
Form	Liquid
Purification	Affinity purification with immunogen.
Buffer	PBS, 0.02% Sodium azide, 50% Glycerol and 0.5% BSA.
Preservative	0.02% Sodium azide
Stabilizer	50% Glycerol and 0.5% BSA
Concentration	1 mg/ml
Storage instruction	For continuous use, store undiluted antibody at 2-8°C for up to a week. For long-term storage, aliquot and store at -20°C. Storage in frost free freezers is not recommended. Avoid repeated freeze/thaw cycles. Suggest spin the vial prior to opening. The antibody solution should be gently mixed before use.
Note	For laboratory research only, not for drug, diagnostic or other use.

### Bioinformation

Gene Symbol	SCGB2A2
Gene Full Name	secretoglobin, family 2A, member 2
Calculated Mw	10 kDa

## Images

---



ARG66500 anti-SCGB2A2 / Mammaglobin A antibody IHC-P image

Immunohistochemistry: Paraffin-embedded Human breast carcinoma stained with ARG66500 anti-SCGB2A2 / Mammaglobin A antibody at 1:200 (4°C, overnight). Antigen Retrieval: Tris/EDTA buffer (pH 8.0) was used.