

ARG66477
anti-SUPV3L1 / SUV3 antibodyPackage: 100 µl
Store at: -20°C

Summary

Product Description	Rabbit Polyclonal antibody recognizes SUPV3L1 / SUV3
Tested Reactivity	Hu, Ms
Tested Application	WB
Host	Rabbit
Clonality	Polyclonal
Isotype	IgG
Target Name	SUPV3L1 / SUV3
Species	Human
Immunogen	Recombinant full length protein of Human SUPV3L1 / SUV3.
Conjugation	Un-conjugated
Alternate Names	SUPV3L1; SUV3; ATP-dependent RNA helicase SUPV3L1, mitochondrial; SUV3-like protein 1; EC 3.6.4.13; Suppressor of var1 3-like protein 1; SUV3L1

Application Instructions

Application table	Application	Dilution
	WB	1:500 - 1:2000
Application Note	* The dilutions indicate recommended starting dilutions and the optimal dilutions or concentrations should be determined by the scientist.	

Properties

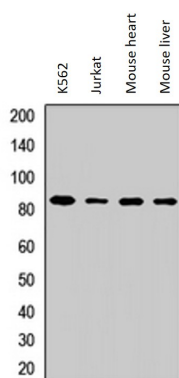
Form	Liquid
Purification	Affinity purification with immunogen.
Buffer	0.42% Potassium phosphate (pH 7.3), 0.87% Sodium chloride, 0.01% Sodium azide and 30% Glycerol.
Preservative	0.87% Sodium chloride
Stabilizer	0.01% Sodium azide and 30% Glycerol
Storage instruction	For continuous use, store undiluted antibody at 2-8°C for up to a week. For long-term storage, aliquot and store at -20°C. Storage in frost free freezers is not recommended. Avoid repeated freeze/thaw cycles. Suggest spin the vial prior to opening. The antibody solution should be gently mixed before use.
Note	For laboratory research only, not for drug, diagnostic or other use.

Bioinformation

Gene Symbol	SUPV3L1
-------------	---------

Gene Full Name	SUV3-like helicase
Function	Major helicase player in mitochondrial RNA metabolism. Component of the mitochondrial degradosome (mtEXO) complex, that degrades 3' overhang double-stranded RNA with a 3'-to-5' directionality in an ATP-dependent manner. ATPase and ATP-dependent multisubstrate helicase, able to unwind double-stranded (ds) DNA and RNA, and RNA/DNA heteroduplexes in the 5'-to-3' direction. Plays a role in the RNA surveillance system in mitochondria; regulates the stability of mature mRNAs, the removal of aberrantly formed mRNAs and the rapid degradation of non coding processing intermediates. Also implicated in recombination and chromatin maintenance pathways. May protect cells from apoptosis. Associates with mitochondrial DNA. [UniProt]
Calculated Mw	88 kDa
Cellular Localization	Nucleus. Mitochondrion matrix. Mitochondrion matrix, mitochondrion nucleoid. [UniProt]

Images



ARG66477 anti-SUPV3L1 / SUV3 antibody WB image

Western blot: K562, Jurkat, Mouse heart and Mouse liver whole cell lysates stained with ARG66477 anti-SUPV3L1 / SUV3 antibody.