

ARG66472 anti-TIPE2 antibody

Package: 100 µg
Store at: -20°C

Summary

Product Description	Rabbit Polyclonal antibody recognizes TIPE2
Tested Reactivity	Hu
Predict Reactivity	Ms, Rat
Tested Application	WB
Host	Rabbit
Clonality	Polyclonal
Isotype	IgG
Target Name	TIPE2
Species	Human
Immunogen	Synthetic peptide corresponding to aa. 30-110 of Human TIPE2.
Conjugation	Un-conjugated
Alternate Names	Inflammation factor protein 20; TNF alpha-induced protein 8-like protein 2; Tumor necrosis factor alpha-induced protein 8-like protein 2; TNFAIP8-like protein 2; TIPE2

Application Instructions

Application table	Application	Dilution
	WB	1:500 - 1:2000
Application Note	* The dilutions indicate recommended starting dilutions and the optimal dilutions or concentrations should be determined by the scientist.	

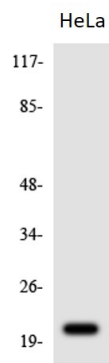
Properties

Form	Liquid
Purification	Affinity purification with immunogen.
Buffer	PBS, 0.02% Sodium azide, 50% Glycerol and 0.5% BSA.
Preservative	0.02% Sodium azide
Stabilizer	50% Glycerol and 0.5% BSA
Concentration	1 mg/ml
Storage instruction	For continuous use, store undiluted antibody at 2-8°C for up to a week. For long-term storage, aliquot and store at -20°C. Storage in frost free freezers is not recommended. Avoid repeated freeze/thaw cycles. Suggest spin the vial prior to opening. The antibody solution should be gently mixed before use.
Note	For laboratory research only, not for drug, diagnostic or other use.

Bioinformation

Gene Symbol	TNFAIP8L2
Gene Full Name	tumor necrosis factor, alpha-induced protein 8-like 2
Function	Acts as a negative regulator of innate and adaptive immunity by maintaining immune homeostasis. Negative regulator of Toll-like receptor and T-cell receptor function. Prevents hyperresponsiveness of the immune system and maintains immune homeostasis. Inhibits JUN/AP1 and NF-kappa-B activation. Promotes Fas-induced apoptosis (By similarity). [UniProt]
Calculated Mw	21 kDa

Images



ARG66472 anti-TIPE2 antibody WB image

Western blot: HeLa cell lysate stained with ARG66472 anti-TIPE2 antibody.