

## ARG66468 anti-ERGIC2 antibody

Package: 100 µl  
Store at: -20°C

### Summary

Product Description	Rabbit Polyclonal antibody recognizes ERGIC2
Tested Reactivity	Hu, Ms
Tested Application	IHC-P, WB
Host	Rabbit
Clonality	Polyclonal
Isotype	IgG
Target Name	ERGIC2
Species	Human
Immunogen	Recombinant full length protein of Human ERGIC2.
Conjugation	Un-conjugated
Alternate Names	CDA14; PTX1; Endoplasmic reticulum-Golgi intermediate compartment protein 2; cd002; Erv41

### Application Instructions

Application table	Application	Dilution
	IHC-P	1:50 - 1:200
	WB	1:500 - 1:2000
Application Note	IHC-P: Antigen Retrieval: Heat mediation was performed in Sodium citrate buffer (pH 6.0). * The dilutions indicate recommended starting dilutions and the optimal dilutions or concentrations should be determined by the scientist.	

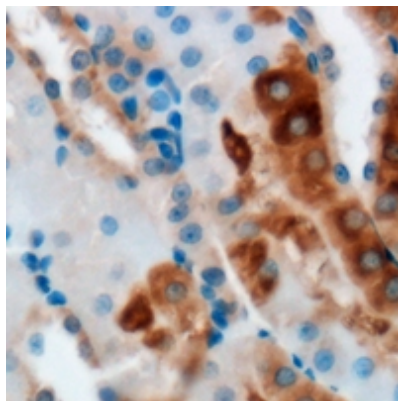
### Properties

Form	Liquid
Purification	Affinity purification with immunogen.
Buffer	0.42% Potassium phosphate (pH 7.3), 0.87% NaCl, 0.01% Sodium azide and 30% Glycerol.
Preservative	0.01% Sodium azide
Stabilizer	30% Glycerol
Storage instruction	For continuous use, store undiluted antibody at 2-8°C for up to a week. For long-term storage, aliquot and store at -20°C. Storage in frost free freezers is not recommended. Avoid repeated freeze/thaw cycles. Suggest spin the vial prior to opening. The antibody solution should be gently mixed before use.
Note	For laboratory research only, not for drug, diagnostic or other use.

### Bioinformation

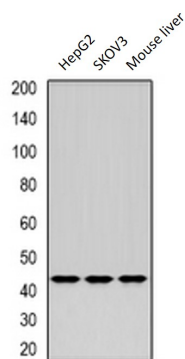
Gene Symbol	ERGIC2
Gene Full Name	ERGIC and golgi 2
Background	ERGIC2, or PTX1, is a ubiquitously expressed nuclear protein that is downregulated in prostate carcinoma (Kwok et al., 2001 [PubMed 11445006]).[supplied by OMIM, Aug 2008]
Function	Possible role in transport between endoplasmic reticulum and Golgi. [UniProt]
Calculated Mw	43 kDa
Cellular Localization	Endoplasmic reticulum-Golgi intermediate compartment membrane; Multi-pass membrane protein. Golgi apparatus, cis-Golgi network membrane; Multi-pass membrane protein. Endoplasmic reticulum membrane; Multi-pass membrane protein. Cytoplasm. Nucleus. Note=Cycles between the endoplasmic reticulum and the Golgi. According to a report, localizes to the nucleus (PubMed:11445006). Another report shows a partial localization in the nucleus (PubMed:17980171). [UniProt]

## Images



ARG66468 anti-ERGIC2 antibody IHC-P image

Immunohistochemistry: Formalin-fixed and paraffin-embedded Mouse kidney. Antigen Retrieval: Heat mediation was performed in Sodium citrate buffer (pH 6.0). The section was then incubated with ARG66468 anti-ERGIC2 antibody at room temperature and detected using an HRP conjugated compact polymer system. DAB was used as the chromogen. The section was then counterstained with haematoxylin and mounted with DPX.



ARG66468 anti-ERGIC2 antibody WB image

Western blot: HepG2, SKOV3 and Mouse liver lysates stained with ARG66468 anti-ERGIC2 antibody.