

ARG66454 anti-POLR21 / RPB8 antibody

Package: 100 µl
Store at: -20°C

Summary

Product Description	Rabbit Polyclonal antibody recognizes POLR21 / RPB8
Tested Reactivity	Hu, Ms, Rat
Predict Reactivity	Bov, Chk, Dog, Mk, Pig, Rb
Tested Application	WB
Host	Rabbit
Clonality	Polyclonal
Isotype	IgG
Target Name	POLR21 / RPB8
Species	Human
Immunogen	KLH-conjugated synthetic peptide within the center region of Human POLR21 / RPB8.
Conjugation	Un-conjugated
Alternate Names	RPB9; RPB14.5; hRPB14.5; DNA-directed RNA polymerase II subunit I; DNA-directed RNA polymerase II subunit RPB9; RNA polymerase II subunit B9; RNA polymerase II 14.5 kDa subunit

Application Instructions

Application table	Application	Dilution
	WB	1:500 - 1:1000
Application Note	* The dilutions indicate recommended starting dilutions and the optimal dilutions or concentrations should be determined by the scientist.	

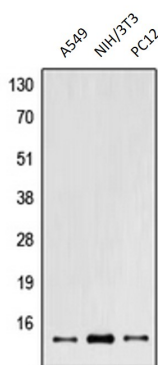
Properties

Form	Liquid
Purification	Affinity purification with immunogen.
Buffer	0.42% Potassium phosphate (pH 7.3), 0.87% NaCl, 0.01% Sodium azide and 30% Glycerol.
Preservative	0.01% Sodium azide
Stabilizer	30% Glycerol
Storage instruction	For continuous use, store undiluted antibody at 2-8°C for up to a week. For long-term storage, aliquot and store at -20°C. Storage in frost free freezers is not recommended. Avoid repeated freeze/thaw cycles. Suggest spin the vial prior to opening. The antibody solution should be gently mixed before use.
Note	For laboratory research only, not for drug, diagnostic or other use.

Bioinformation

Gene Symbol	POLR2I
Gene Full Name	polymerase (RNA) II (DNA directed) polypeptide I, 14.5kDa
Background	This gene encodes a subunit of RNA polymerase II, the polymerase responsible for synthesizing messenger RNA in eukaryotes. This subunit, in combination with two other polymerase subunits, forms the DNA binding domain of the polymerase, a groove in which the DNA template is transcribed into RNA. The product of this gene has two zinc finger motifs with conserved cysteines and the subunit does possess zinc binding activity. [provided by RefSeq, Jul 2008]
Function	DNA-dependent RNA polymerase catalyzes the transcription of DNA into RNA using the four ribonucleoside triphosphates as substrates. Component of RNA polymerase II which synthesizes mRNA precursors and many functional non-coding RNAs. Pol II is the central component of the basal RNA polymerase II transcription machinery. It is composed of mobile elements that move relative to each other. RPB9 is part of the upper jaw surrounding the central large cleft and thought to grab the incoming DNA template (By similarity). [UniProt]
Calculated Mw	15 kDa
Cellular Localization	Nucleus, nucleolus. [UniProt]

Images



ARG66454 anti-POLR2I / RPB8 antibody WB image

Western blot: A549, NIH/3T3 and PC12 whole cell lysates stained with ARG66454 anti-POLR2I / RPB8 antibody.