

ARG66443
anti-NRXN3 beta antibodyPackage: 100 µg
Store at: -20°C

Summary

Product Description	Rabbit Polyclonal antibody recognizes NRXN3 beta
Tested Reactivity	Hu
Tested Application	WB
Host	Rabbit
Clonality	Polyclonal
Isotype	IgG
Target Name	NRXN3 beta
Species	Human
Immunogen	Synthetic peptide within aa. 30-110 of Human NRXN3 beta.
Conjugation	Un-conjugated
Alternate Names	C14orf60; Neurexin III-alpha; Neurexin-3; Neurexin-3-alpha

Application Instructions

Application table	Application	Dilution
	WB	1:500 - 1:2000
Application Note	* The dilutions indicate recommended starting dilutions and the optimal dilutions or concentrations should be determined by the scientist.	
Observed Size	~ 70 kDa	

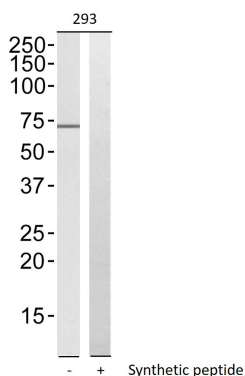
Properties

Form	Liquid
Purification	Affinity purification with immunogen.
Buffer	PBS, 0.02% Sodium azide, 50% Glycerol and 0.5% BSA.
Preservative	0.02% Sodium azide
Stabilizer	50% Glycerol and 0.5% BSA
Concentration	1 mg/ml
Storage instruction	For continuous use, store undiluted antibody at 2-8°C for up to a week. For long-term storage, aliquot and store at -20°C. Storage in frost free freezers is not recommended. Avoid repeated freeze/thaw cycles. Suggest spin the vial prior to opening. The antibody solution should be gently mixed before use.
Note	For laboratory research only, not for drug, diagnostic or other use.

Bioinformation

Gene Symbol	NRXN3
Gene Full Name	neurexin 3
Background	This gene encodes a member of a family of proteins that function in the nervous system as receptors and cell adhesion molecules. Extensive alternative splicing and the use of alternative promoters results in multiple transcript variants and protein isoforms for this gene, but the full-length nature of many of these variants has not been determined. Transcripts that initiate from an upstream promoter encode alpha isoforms, which contain epidermal growth factor-like (EGF-like) sequences and laminin G domains. Transcripts initiating from the downstream promoter encode beta isoforms, which lack EGF-like sequences. Genetic variation at this locus has been associated with a range of behavioral phenotypes, including alcohol dependence and autism spectrum disorder. [provided by RefSeq, Dec 2012]
Function	Neuronal cell surface protein that may be involved in cell recognition and cell adhesion. May mediate intracellular signaling. [UniProt]
Calculated Mw	181 kDa
PTM	Processed by alpha-secretase leading to the formation of an extracellular soluble protein as well as a C-terminal membrane-embedded fragment (CTF). Proteolysis of these CTFs by gamma-secretase releases intracellular domains (ICDs) and extracellular peptides. [UniProt]
Cellular Localization	Membrane; Single-pass type I membrane protein. [UniProt]

Images



ARG66443 anti-NRXN3 beta antibody WB image

Western blot: 293 cell lysate stained with ARG66443 anti-NRXN3 beta antibody. The lane on the right is blocked with the synthetic peptide.