

ARG66438 anti-Cytokeratin 5 antibody

Package: 100 µg
Store at: -20°C

Summary

Product Description	Rabbit Polyclonal antibody recognizes Cytokeratin 5
Tested Reactivity	Hu, Ms, Rat
Tested Application	ICC/IF, IHC-P, WB
Host	Rabbit
Clonality	Polyclonal
Isotype	IgG
Target Name	Cytokeratin 5
Species	Human
Immunogen	Synthetic peptide corresponding to aa. 510-590 of Human Cytokeratin 5.
Conjugation	Un-conjugated
Alternate Names	DDD1; 58 kDa cytokeratin; Keratin, type II cytoskeletal 5; EBS2; Keratin-5; Cytokeratin-5; CK5; KRT5A; K5; CK-5; Type-II keratin Kb5; DDD

Application Instructions

Application table	Application	Dilution
	ICC/IF	1:200 - 1:1000
	IHC-P	1:100 - 1:300
	WB	1:500 - 1:2000

Application Note * The dilutions indicate recommended starting dilutions and the optimal dilutions or concentrations should be determined by the scientist.

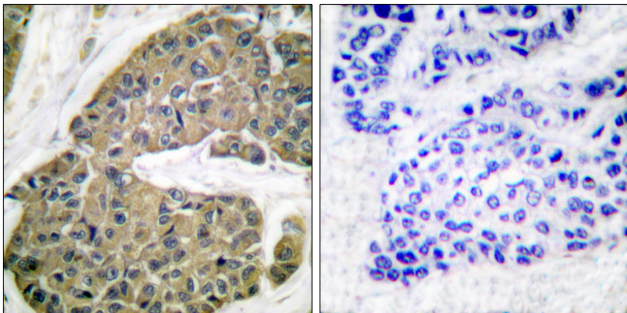
Properties

Form	Liquid
Purification	Affinity purification with immunogen.
Buffer	PBS, 0.02% Sodium azide, 50% Glycerol and 0.5% BSA.
Preservative	0.02% Sodium azide
Stabilizer	50% Glycerol and 0.5% BSA
Storage instruction	For continuous use, store undiluted antibody at 2-8°C for up to a week. For long-term storage, aliquot and store at -20°C. Storage in frost free freezers is not recommended. Avoid repeated freeze/thaw cycles. Suggest spin the vial prior to opening. The antibody solution should be gently mixed before use.
Note	For laboratory research only, not for drug, diagnostic or other use.

Bioinformation

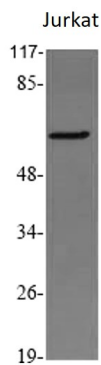
Gene Symbol	KRT5
Gene Full Name	keratin 5, type II
Background	Cytokeratin 5 is a member of the keratin gene family. The type II cytokeratins consist of basic or neutral proteins which are arranged in pairs of heterotypic keratin chains coexpressed during differentiation of simple and stratified epithelial tissues. This type II cytokeratin is specifically expressed in the basal layer of the epidermis with family member KRT14. Mutations in these genes have been associated with a complex of diseases termed epidermolysis bullosa simplex. The type II cytokeratins are clustered in a region of chromosome 12q12-q13. [provided by RefSeq, Jul 2008]
Calculated Mw	62 kDa

Images



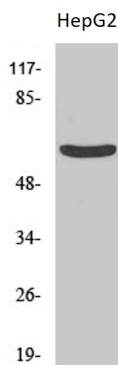
ARG66438 anti-Cytokeratin 5 antibody IHC-P image

Immunohistochemistry: Paraffin-embedded Human breast carcinoma stained with ARG66438 anti-Cytokeratin 5 antibody. The picture on the right is blocked with the synthetic peptide.



ARG66438 anti-Cytokeratin 5 antibody WB image

Western blot: Jurkat cell lysate stained with ARG66438 anti-Cytokeratin 5 antibody at 1:1000 dilution.



ARG66438 anti-Cytokeratin 5 antibody WB image

Western blot: HepG2 cell lysate stained with ARG66438 anti-Cytokeratin 5 antibody at 1:1000 dilution.