

**ARG66428**  
anti-IL2 antibody [SQab18130]Package: 100 µg  
Store at: -20°C

### Summary

Product Description	Mouse Monoclonal antibody [SQab18130] recognizes IL2
Tested Reactivity	Hu
Tested Application	ELISA, FACS, ICC/IF, IHC-P, WB
Host	Mouse
Clonality	Monoclonal
Clone	SQab18130
Isotype	IgG1, kappa
Target Name	IL2
Species	Human
Immunogen	Recombinant Human IL2 protein.
Conjugation	Un-conjugated
Alternate Names	TCGF; IL-2; lymphokine; Interleukin-2; Aldesleukin; T-cell growth factor

### Application Instructions

Application table	Application	Dilution
	ELISA	1:3000 - 1:10000
	FACS	1:400 - 1:1000
	ICC/IF	1:400 - 1:1000
	IHC-P	Assay-dependent
	WB	1:2500 - 1:5000

**Application Note** \* The dilutions indicate recommended starting dilutions and the optimal dilutions or concentrations should be determined by the scientist.

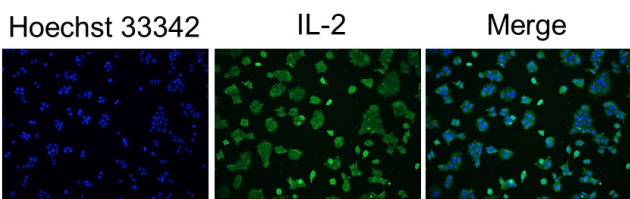
### Properties

Purification	Affinity purification with immunogen.
Buffer	PBS (pH 7.4) and 0.01% Thimerosal.
Preservative	0.01% Thimerosal
Concentration	1 mg/ml
Storage instruction	For continuous use, store undiluted antibody at 2-8°C for up to a week. For long-term storage, aliquot and store at -20°C or below. Storage in frost free freezers is not recommended. Avoid repeated freeze/thaw cycles. Suggest spin the vial prior to opening. The antibody solution should be gently mixed before use.

## Bioinformation

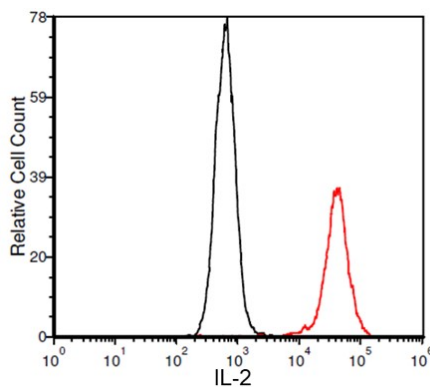
Gene Symbol	IL2
Gene Full Name	interleukin 2
Background	The protein encoded by this gene is a secreted cytokine that is important for the proliferation of T and B lymphocytes. The receptor of this cytokine is a heterotrimeric protein complex whose gamma chain is also shared by interleukin 4 (IL4) and interleukin 7 (IL7). The expression of this gene in mature thymocytes is monoallelic, which represents an unusual regulatory mode for controlling the precise expression of a single gene. The targeted disruption of a similar gene in mice leads to ulcerative colitis-like disease, which suggests an essential role of this gene in the immune response to antigenic stimuli. [provided by RefSeq, Jul 2008]
Function	Produced by T-cells in response to antigenic or mitogenic stimulation, this protein is required for T-cell proliferation and other activities crucial to regulation of the immune response. Can stimulate B-cells, monocytes, lymphokine-activated killer cells, natural killer cells, and glioma cells. [UniProt]
Calculated Mw	18 kDa
Cellular Localization	Secreted. [UniProt]

## Images



ARG66428 anti-IL2 antibody [SQab18130] ICC/IF image

Immunofluorescence: MCF-7 cells were fixed in 4% PFA, permeabilized with PBS containing 0.1% Triton X-100. Cells were stained with ARG66428 anti-IL2 antibody [SQab18130] (green) at 1:400 and cell nuclei were stained with Hoechst 33342 (blue).

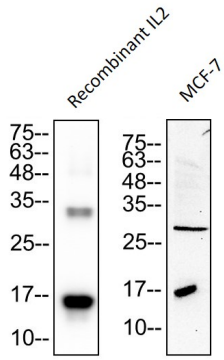


ARG66428 anti-IL2 antibody [SQab18130] FACS image

Flow Cytometry: MCF-7 cells were stained with ARG66428 anti-IL2 antibody [SQab18130] at 1 µg/ml (red) and without antibody control (black).

### ARG66428 anti-IL2 antibody [SQab18130] WB image

Western blot: 100 ng of Recombinant IL2 protein and 60 µg of MCF-7 cell lysate stained with ARG66428 anti-IL2 antibody [SQab18130] at 1:2000 dilution.



### ARG66428 anti-IL2 antibody [SQab18130] ELISA image

ELISA: Titration curve of ARG66428 anti-IL2 antibody [SQab18130]. Red: IL2; Black: BSA (negative control).

