

ARG66427
anti-TGF beta 1 antibody [SQab18129]Package: 100 µg
Store at: -20°C

Summary

Product Description	Mouse Monoclonal antibody [SQab18129] recognizes TGF beta 1
Tested Reactivity	Hu
Tested Application	ELISA, FACS, ICC/IF, IHC-P, WB
Host	Mouse
Clonality	Monoclonal
Clone	SQab18129
Isotype	IgG1, kappa
Target Name	TGF beta 1
Species	Human
Immunogen	Recombinant Human TGF beta 1 protein.
Conjugation	Un-conjugated
Alternate Names	TGFB; DPD1; TGFbeta; CED; Transforming growth factor beta-1; LAP; TGF-beta-1

Application Instructions

Application table	Application	Dilution
	ELISA	1:3000 - 1:10000
	FACS	1:400 - 1:1000
	ICC/IF	1:400 - 1:1000
	IHC-P	Assay-dependent
	WB	1:2500 - 1:5000

Application Note * The dilutions indicate recommended starting dilutions and the optimal dilutions or concentrations should be determined by the scientist.

Properties

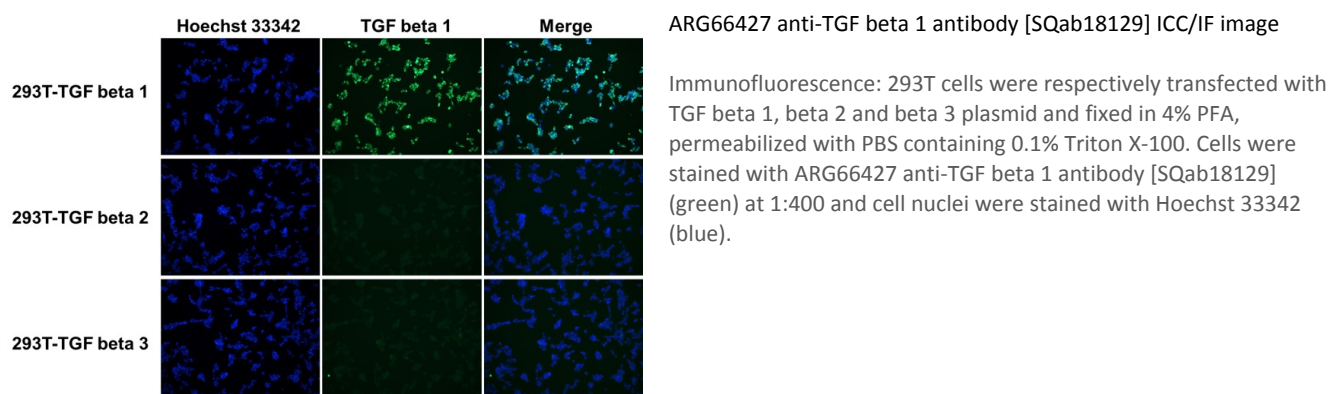
Purification	Affinity purification with immunogen.
Buffer	PBS (pH 7.4) and 0.01% Thimerosal.
Preservative	0.01% Thimerosal
Concentration	1 mg/ml
Storage instruction	For continuous use, store undiluted antibody at 2-8°C for up to a week. For long-term storage, aliquot and store at -20°C or below. Storage in frost free freezers is not recommended. Avoid repeated freeze/thaw cycles. Suggest spin the vial prior to opening. The antibody solution should be gently mixed before use.

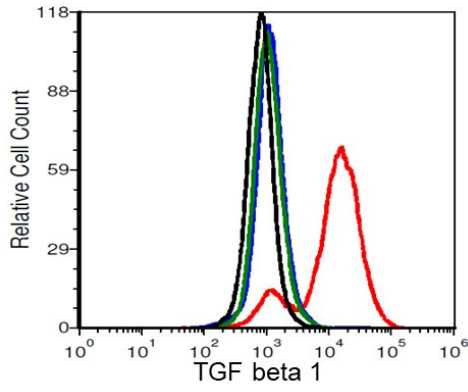
Note For laboratory research only, not for drug, diagnostic or other use.

Bioinformation

Gene Symbol	TGFB1
Gene Full Name	transforming growth factor, beta 1
Background	This gene encodes a member of the transforming growth factor beta (TGFB) family of cytokines, which are multifunctional peptides that regulate proliferation, differentiation, adhesion, migration, and other functions in many cell types. Many cells have TGFB receptors, and the protein positively and negatively regulates many other growth factors. The secreted protein is cleaved into a latency-associated peptide (LAP) and a mature TGFB1 peptide, and is found in either a latent form composed of a TGFB1 homodimer, a LAP homodimer, and a latent TGFB1-binding protein, or in an active form composed of a TGFB1 homodimer. The mature peptide may also form heterodimers with other TGFB family members. This gene is frequently upregulated in tumor cells, and mutations in this gene result in Camurati-Engelmann disease.[provided by RefSeq, Oct 2009]
Function	Multifunctional protein that controls proliferation, differentiation and other functions in many cell types. Many cells synthesize TGFB1 and have specific receptors for it. It positively and negatively regulates many other growth factors. It plays an important role in bone remodeling as it is a potent stimulator of osteoblastic bone formation, causing chemotaxis, proliferation and differentiation in committed osteoblasts. Can promote either T-helper 17 cells (Th17) or regulatory T-cells (Treg) lineage differentiation in a concentration-dependent manner. At high concentrations, leads to FOXP3-mediated suppression of RORC and down-regulation of IL-17 expression, favoring Treg cell development. At low concentrations in concert with IL-6 and IL-21, leads to expression of the IL-17 and IL-23 receptors, favoring differentiation to Th17 cells. [UniProt]
Calculated Mw	44 kDa
PTM	Glycosylated. The precursor is cleaved into mature TGF-beta-1 and LAP, which remains non-covalently linked to mature TGF-beta-1 rendering it inactive. [UniProt]
Cellular Localization	Secreted, extracellular space, extracellular matrix. [UniProt]

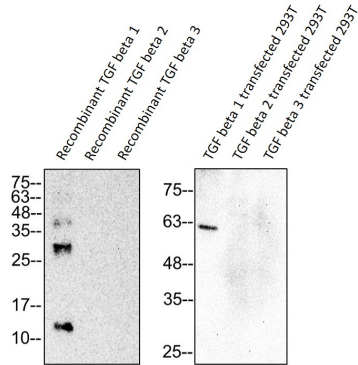
Images





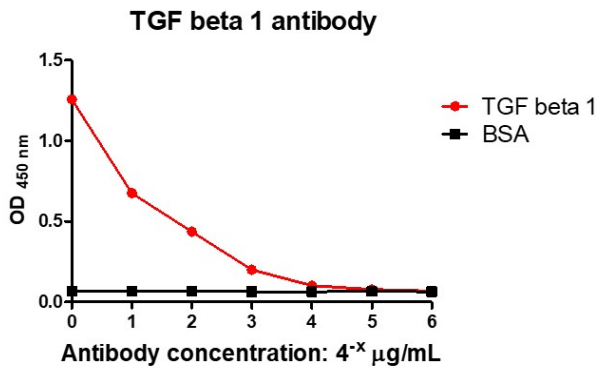
ARG66427 anti-TGF beta 1 antibody [SQab18129] FACS image

Flow Cytometry: 293T cells (black) were respectively transfected with TGF beta 1 (red), beta 2 (blue) and beta 3 (green) plasmid and stained with ARG66427 anti-TGF beta 1 antibody [SQab18129] at 1 µg/ml dilution.



ARG66427 anti-TGF beta 1 antibody [SQab18129] WB image

Western blot: 25 ng of Recombinant TGF beta 1 protein, 25 ng of Recombinant TGF beta 2 protein, 25 ng of Recombinant TGF beta 3 protein, 30 µg of TGF beta 1 transfected 293T, 30 µg of TGF beta 2 transfected 293T and 30 µg of TGF beta 3 transfected 293T stained with ARG66427 anti-TGF beta 1 antibody [SQab18129] at 1:2000 dilution.



ARG66427 anti-TGF beta 1 antibody [SQab18129] ELISA image

ELISA: Titration curve of ARG66427 anti-TGF beta 1 antibody [SQab18129]. Red: TGF beta 1; Black: BSA (negative control).