

ARG66374
anti-CSTF1 / CstF 50 antibodyPackage: 100 µg
Store at: -20°C

Summary

Product Description	Rabbit Polyclonal antibody recognizes CSTF1 / CstF 50
Tested Reactivity	Hu
Tested Application	WB
Host	Rabbit
Clonality	Polyclonal
Isotype	IgG
Target Name	CSTF1 / CstF 50
Species	Human
Immunogen	Synthetic peptide within aa. 1-80 of Human CSTF1 / CstF 50.
Conjugation	Un-conjugated
Alternate Names	Cleavage stimulation factor subunit 1; Cleavage stimulation factor 50 kDa subunit; CstF-50; CSTF 50 kDa subunit; CstFp50; CF-1 50 kDa subunit

Application Instructions

Application table	Application	Dilution
	WB	1:500 - 1:2000
Application Note	* The dilutions indicate recommended starting dilutions and the optimal dilutions or concentrations should be determined by the scientist.	
Observed Size	~ 48 kDa	

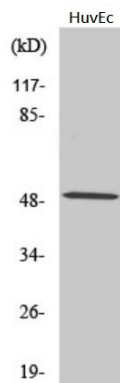
Properties

Form	Liquid
Purification	Affinity purification with immunogen.
Buffer	PBS, 0.02% Sodium azide, 50% Glycerol and 0.5% BSA.
Preservative	0.02% Sodium azide
Stabilizer	50% Glycerol and 0.5% BSA
Concentration	1 mg/ml
Storage instruction	For continuous use, store undiluted antibody at 2-8°C for up to a week. For long-term storage, aliquot and store at -20°C. Storage in frost free freezers is not recommended. Avoid repeated freeze/thaw cycles. Suggest spin the vial prior to opening. The antibody solution should be gently mixed before use.
Note	For laboratory research only, not for drug, diagnostic or other use.

Bioinformation

Gene Symbol	CSTF1
Gene Full Name	cleavage stimulation factor, 3' pre-RNA, subunit 1, 50kDa
Background	This gene encodes one of three subunits which combine to form cleavage stimulation factor (CSTF). CSTF is involved in the polyadenylation and 3'end cleavage of pre-mRNAs. Similar to mammalian G protein beta subunits, this protein contains transducin-like repeats. Several transcript variants with different 5' UTR, but encoding the same protein, have been found for this gene. [provided by RefSeq, Jul 2008]
Function	One of the multiple factors required for polyadenylation and 3'-end cleavage of mammalian pre-mRNAs. May be responsible for the interaction of CSTF with other factors to form a stable complex on the pre-mRNA. [UniProt]
Calculated Mw	48 kDa
PTM	The N-terminus is blocked. [UniProt]

Images



ARG66374 anti-CSTF1 / CstF 50 antibody WB image

Western blot: HuvEc cell lysate stained with ARG66374 anti-CSTF1 / CstF 50 antibody.