

ARG66284 anti-IL16 antibody [SQab1747]

Package: 100 µg
Store at: -20°C

Summary

| | |
|---------------------|--|
| Product Description | Mouse Monoclonal antibody [SQab1747] recognizes IL16 |
| Tested Reactivity | Hu, Ms |
| Predict Reactivity | Rat |
| Tested Application | ELISA, FACS, ICC/IF, IHC, WB |
| Host | Mouse |
| Clonality | Monoclonal |
| Clone | SQab1747 |
| Isotype | IgG1 |
| Target Name | IL16 |
| Species | Human |
| Immunogen | Recombinant Human IL16 protein. |
| Conjugation | Un-conjugated |
| Alternate Names | pIL-16; Lymphocyte chemoattractant factor; PRIL16; IL-16; NIL16; LCF; Pro-interleukin-16 |

Application Instructions

| Application table | Application | Dilution |
|-------------------|--|------------------|
| | ELISA | 1:3000 - 1:10000 |
| | FACS | 1:400 - 1:1000 |
| | ICC/IF | 1:100 - 1:500 |
| | IHC | Assay-dependent |
| | WB | 1:2500 - 1:5000 |
| Application Note | * The dilutions indicate recommended starting dilutions and the optimal dilutions or concentrations should be determined by the scientist. | |

Properties

| | |
|---------------------|--|
| Form | Liquid |
| Buffer | PBS (pH 7.4) and 0.01% Thimerosal. |
| Preservative | 0.01% Thimerosal |
| Concentration | 1 mg/ml |
| Storage instruction | For continuous use, store undiluted antibody at 2-8°C for up to a week. For long-term storage, aliquot and store at -20°C or below. Storage in frost free freezers is not recommended. Avoid repeated freeze/thaw cycles. Suggest spin the vial prior to opening. The antibody solution should be gently mixed |

before use.

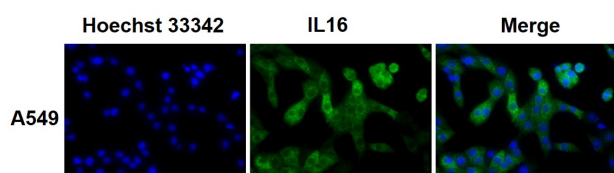
Note

For laboratory research only, not for drug, diagnostic or other use.

Bioinformation

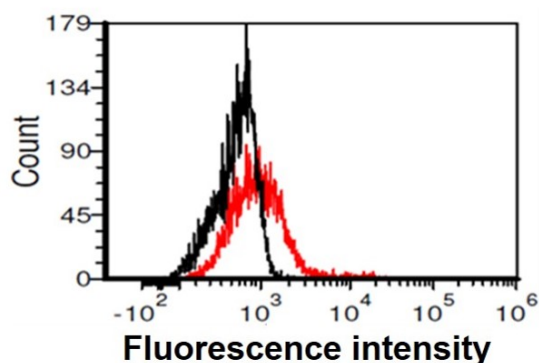
| | |
|----------------|---|
| Gene Symbol | IL16 |
| Gene Full Name | interleukin 16 |
| Background | The protein encoded by this gene is a pleiotropic cytokine that functions as a chemoattractant, a modulator of T cell activation, and an inhibitor of HIV replication. The signaling process of this cytokine is mediated by CD4. The product of this gene undergoes proteolytic processing, which is found to yield two functional proteins. The cytokine function is exclusively attributed to the secreted C-terminal peptide, while the N-terminal product may play a role in cell cycle control. Caspase 3 is reported to be involved in the proteolytic processing of this protein. Alternate splicing results in multiple transcript variants. [provided by RefSeq, Feb 2010] |
| Function | <p>Interleukin-16 stimulates a migratory response in CD4+ lymphocytes, monocytes, and eosinophils. Primes CD4+ T-cells for IL-2 and IL-15 responsiveness. Also induces T-lymphocyte expression of interleukin 2 receptor. Ligand for CD4.</p> <p>Isoform 1 may act as a scaffolding protein that anchors ion channels in the membrane.</p> <p>Isoform 3 is involved in cell cycle progression in T-cells. Appears to be involved in transcriptional regulation of SKP2 and is probably part of a transcriptional repression complex on the core promoter of the SKP2 gene. May act as a scaffold for GABPB1 (the DNA-binding subunit the GABP transcription factor complex) and HDAC3 thus maintaining transcriptional repression and blocking cell cycle progression in resting T-cells. [UniProt]</p> |
| Calculated Mw | 142 kDa |
| PTM | Isoform 3 is synthesized as a chemo-attractant inactive precursor in hemopoietic tissues and is proteolytically cleaved by caspase-3 to yield IL-16. [UniProt] |

Images



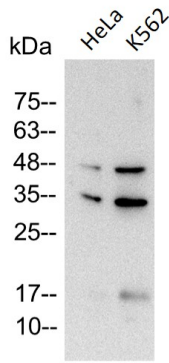
ARG66284 anti-IL16 antibody [SQab1747] ICC/IF image

Immunofluorescence: A549 cells stained with ARG66284 anti-IL16 antibody [SQab1747] at 1:200 dilution.



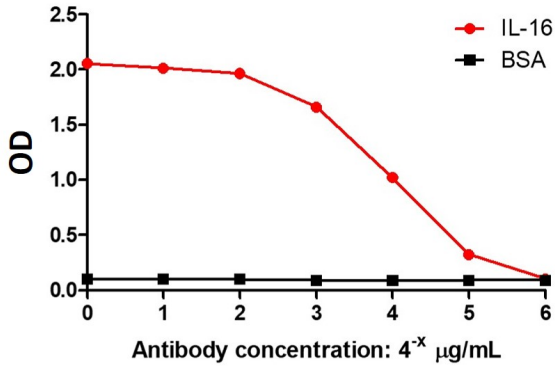
ARG66284 anti-IL16 antibody [SQab1747] FACS image

Flow Cytometry: HeLa cells stained with ARG66284 anti-IL16 antibody [SQab1747] at 1 µg/ml (red) and without antibody control (black).



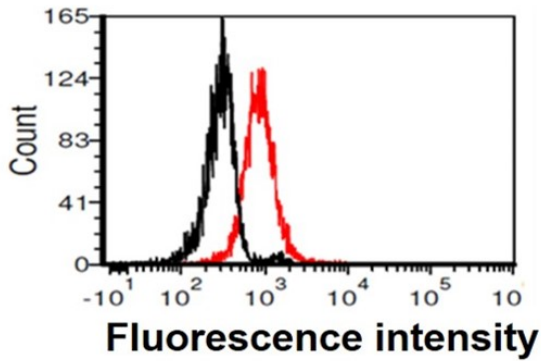
ARG66284 anti-IL16 antibody [SQab1747] WB image

Western blot: 20 µg of HeLa and 30 µg of K562 cell lysates stained with ARG66284 anti-IL16 antibody [SQab1747] at 1:5000 dilution.



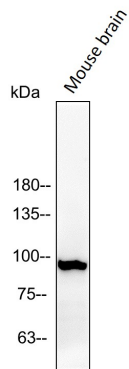
ARG66284 anti-IL16 antibody [SQab1747] ELISA image

ELISA: Titration curve of ARG66284 anti-IL16 antibody [SQab1747] in ELISA. Red: IL16; Black: BSA (negative control).



ARG66284 anti-IL16 antibody [SQab1747] FACS image

Flow Cytometry: K562 cells stained with ARG66284 anti-IL16 antibody [SQab1747] at 1 µg/ml (red) and without antibody control (black).



ARG66284 anti-IL16 antibody [SQab1747] WB image

Western blot: 50 µg of Mouse brain lysate stained with ARG66284 anti-IL16 antibody [SQab1747] at 1:5000 dilution.