

**ARG66232**  
anti-CCL16 / LEC antibodyPackage: 100 µl  
Store at: -20°C

### Summary

Product Description	Rabbit Polyclonal antibody recognizes CCL16 / LEC
Tested Reactivity	Hu
Predict Reactivity	Ms, Rat
Tested Application	IHC-P
Host	Rabbit
Clonality	Polyclonal
Isotype	IgG
Target Name	CCL16 / LEC
Antigen Species	Human
Immunogen	Synthetic peptide around the C-terminus of Human CCL16 / LEC.
Conjugation	Un-conjugated
Alternate Names	CKb12; HCC-4; LEC; Monotactin-1; SCYA16; Chemokine LEC; MTN-1; SCYL4; Mtn-1; Lymphocyte and monocyte chemoattractant; Small-inducible cytokine A16; Liver-expressed chemokine; IL-10-inducible chemokine; C-C motif chemokine 16; NCC4; LCC-1; ILINCK; LMC; Chemokine CC-4; NCC-4

### Application Instructions

Application table	Application	Dilution
	IHC-P	1:100 - 1:300
Application Note	* The dilutions indicate recommended starting dilutions and the optimal dilutions or concentrations should be determined by the scientist.	
Positive Control	IHC-P: Human thyroid and liver cancer.	
Calculated Mw	14 kDa	

### Properties

Form	Liquid
Purification	Affinity purification with immunogen.
Buffer	PBS (pH 7.4), 0.05% Sodium azide and 50% Glycerol.
Preservative	0.05% Sodium azide
Stabilizer	50% Glycerol
Concentration	2.8 mg/ml
Storage instruction	For continuous use, store undiluted antibody at 2-8°C for up to a week. For long-term storage, aliquot and store at -20°C. Storage in frost free freezers is not recommended. Avoid repeated freeze/thaw cycles. Suggest spin the vial prior to opening. The antibody solution should be gently mixed before use.

Note

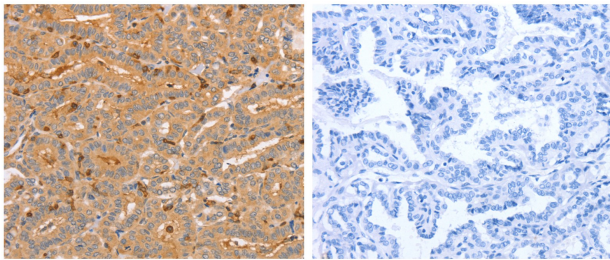
For laboratory research only, not for drug, diagnostic or other use.

## Bioinformation

---

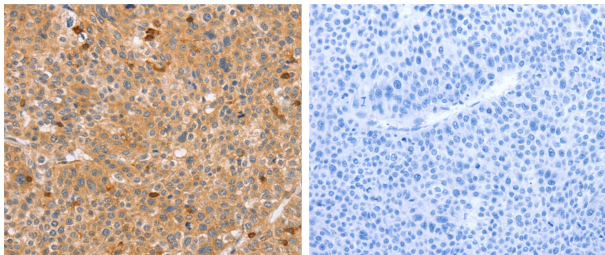
Gene Symbol	CCL16
Gene Full Name	chemokine (C-C motif) ligand 16
Background	This gene is one of several cytokine genes clustered on the q-arm of chromosome 17. Cytokines are a family of secreted proteins involved in immunoregulatory and inflammatory processes. The CC cytokines are proteins characterized by two adjacent cysteines. The cytokine encoded by this gene displays chemotactic activity for lymphocytes and monocytes but not for neutrophils. This cytokine also shows a potent myelosuppressive activity and suppresses proliferation of myeloid progenitor cells. The expression of this gene is upregulated by IL-10. [provided by RefSeq, Jul 2008]
Function	Shows chemotactic activity for lymphocytes and monocytes but not neutrophils. Also shows potent myelosuppressive activity, suppresses proliferation of myeloid progenitor cells. Recombinant SCYA16 shows chemotactic activity for monocytes and THP-1 monocytes, but not for resting lymphocytes and neutrophils. Induces a calcium flux in THP-1 cells that were desensitized by prior expression to RANTES. [UniProt]

## Images



ARG66232 anti-CCL16 / LEC antibody IHC-P image

Immunohistochemistry: Paraffin-embedded Human thyroid cancer tissue stained with ARG66232 anti-CCL16 / LEC antibody (left) at 1:60 dilution, or the same antibody pre-incubated with antigen (right). (Original magnification: X200)



ARG66232 anti-CCL16 / LEC antibody IHC-P image

Immunohistochemistry: Paraffin-embedded Human liver cancer tissue stained with ARG66232 anti-CCL16 / LEC antibody (left) at 1:60 dilution, or the same antibody pre-incubated with antigen (right). (Original magnification: X200)