

## ARG66228 anti-CD49c / Integrin alpha 3 antibody [ASC-1]

Package: 100 µg  
Store at: -20°C

### Summary

Product Description	Mouse Monoclonal antibody [ASC-1] recognizes CD49c / Integrin alpha 3
Tested Reactivity	Hu
Tested Application	CyTOF®-candidate, FACS, IHC-Fr, IP, WB
Specificity	This antibody recognizes CD49c (integrin alpha 3), a transmembrane glycoprotein composed of disulfide linked 125 kDa and 30 kDa chains, and expressed on adherent cell lines and to a lesser extent on T and B cells and monocytes.
Host	Mouse
Clonality	Monoclonal
Clone	ASC-1
Isotype	IgG1
Target Name	CD49c / Integrin alpha 3
Species	Human
Immunogen	Human SSC-9 cell line (squamous cell carcinoma).
Conjugation	Un-conjugated
Alternate Names	FRP-2; MSK18; GAPB3; CD49 antigen-like family member C; CD49C; ILNEB; Integrin alpha-3; VL3A; Galactoprotein B3; VLA3a; CD antigen CD49c; VCA-2; VLA-3 subunit alpha; GAP-B3

### Application Instructions

Application table	Application	Dilution
	CyTOF®-candidate	Assay-dependent
	FACS	1 - 4 µg/ml
	IHC-Fr	Assay-dependent
	IP	Assay-dependent
	WB	Assay-dependent
Application Note	* The dilutions indicate recommended starting dilutions and the optimal dilutions or concentrations should be determined by the scientist.	

### Properties

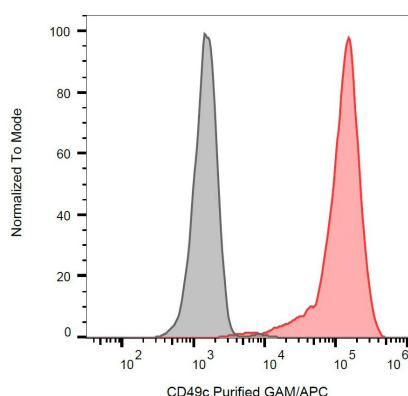
Form	Liquid
Purification	Purification with Protein A.
Purity	> 95% (by SDS-PAGE)
Buffer	PBS (pH 7.4) and 15 mM Sodium azide.

Preservative	15 mM Sodium azide
Concentration	1 mg/ml
Storage instruction	For continuous use, store undiluted antibody at 2-8°C for up to a week. For long-term storage, aliquot and store at -20°C or below. Storage in frost free freezers is not recommended. Avoid repeated freeze/thaw cycles. Suggest spin the vial prior to opening. The antibody solution should be gently mixed before use.
Note	For laboratory research only, not for drug, diagnostic or other use.

## Bioinformation

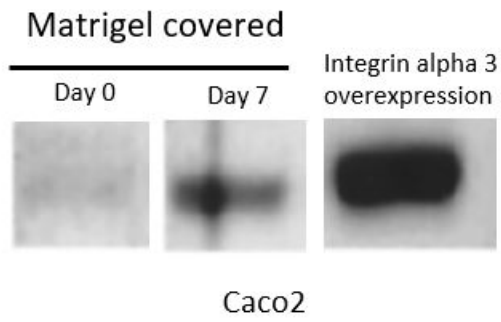
Gene Symbol	ITGA3
Gene Full Name	integrin, alpha 3 (antigen CD49C, alpha 3 subunit of VLA-3 receptor)
Background	The protein encoded by this gene belongs to the family of integrins. Integrins are heterodimeric integral membrane proteins composed of an alpha chain and a beta chain, and function as cell surface adhesion molecules. This gene encodes alpha 3 subunit, which undergoes post-translational cleavage in the extracellular domain to yield disulfide-linked light and heavy chains that join with beta 1 subunit to form an integrin that interacts with many extracellular-matrix proteins. Alternatively spliced transcript variants encoding different isoforms have been identified for this gene. [provided by RefSeq, Oct 2008]
Function	Integrin alpha-3/beta-1 is a receptor for fibronectin, laminin, collagen, epiligrin, thrombospondin and CSPG4. Integrin alpha-3/beta-1 provides a docking site for FAP (seprase) at invadopodia plasma membranes in a collagen-dependent manner and hence may participate in the adhesion, formation of invadopodia and matrix degradation processes, promoting cell invasion. Alpha-3/beta-1 may mediate with LGALS3 the stimulation by CSPG4 of endothelial cells migration. [UniProt]
Highlight	Related products: <a href="#">CD49c antibodies</a> ; <a href="#">Anti-Mouse IgG secondary antibodies</a> ; Related news: <a href="#">CyTOF-candidate Antibodies</a>
Calculated Mw	A transmembrane glycoprotein composed of disulfide linked 125 kDa and 30 kDa chains.
PTM	Isoform 1, but not isoform 2, is phosphorylated on serine residues. Phosphorylation increases after phorbol 12-myristate 13-acetate stimulation. [UniProt]

## Images



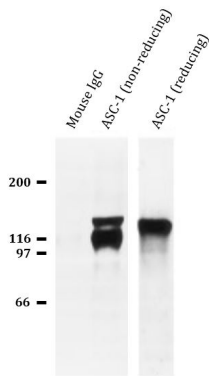
ARG66228 anti-CD49c / Integrin alpha 3 antibody [ASC-1] FACS image

Flow Cytometry: HeLa cells stained with ARG66228 anti-CD49c / Integrin alpha 3 antibody [ASC-1].



**ARG66228 anti-CD49c / Integrin alpha 3 antibody [ASC-1] WB image**

Western blot: Caco2 cells covered with matrigel for 0 or 7 days (Lane 1 & Lane 2) and Integrin alpha 3 overexpressing Caco2 cells. The blots were stained with ARG66228 anti-CD49c / Integrin alpha 3 antibody [ASC-1].



**ARG66228 anti-CD49c / Integrin alpha 3 antibody [ASC-1] IP image**

Immunoprecipitation: Biotinylated SCC9 cell extract were immunoprecipitated by control mouse IgG (Lane 1) or ARG66228 anti-CD49c / Integrin alpha 3 antibody [ASC-1] (Lane 2 & Lane 3). Then run SDS-PAGE at non-reducing condition (Lane 2) or reducing condition (Lane 3).