

**ARG66209**  
anti-Hexokinase 2 antibodyPackage: 100 µl  
Store at: -20°C

### Summary

Product Description	Rabbit Polyclonal antibody recognizes Hexokinase 2
Tested Reactivity	Hu
Predict Reactivity	Ms, Rat
Tested Application	ICC/IF, IHC-P, WB
Host	Rabbit
Clonality	Polyclonal
Isotype	IgG
Target Name	Hexokinase 2
Antigen Species	Human
Immunogen	Fusion protein of Human Hexokinase II.
Conjugation	Un-conjugated
Alternate Names	Muscle form hexokinase; HK II; Hexokinase-2; Hexokinase type II; EC 2.7.1.1; HXK2; HKII

### Application Instructions

Application table	Application	Dilution
	ICC/IF	Assay-dependent
	IHC-P	1:50 - 1:300
	WB	1:1000 - 1:5000
Application Note	* The dilutions indicate recommended starting dilutions and the optimal dilutions or concentrations should be determined by the scientist.	
Calculated Mw	102 kDa	

### Properties

Form	Liquid
Purification	Affinity purification with immunogen.
Buffer	PBS (pH 7.4), 0.05% Sodium azide and 40% Glycerol.
Preservative	0.05% Sodium azide
Stabilizer	40% Glycerol
Concentration	2.4 mg/ml
Storage instruction	For continuous use, store undiluted antibody at 2-8°C for up to a week. For long-term storage, aliquot and store at -20°C or below. Storage in frost free freezers is not recommended. Avoid repeated freeze/thaw cycles. Suggest spin the vial prior to opening. The antibody solution should be gently mixed

before use.

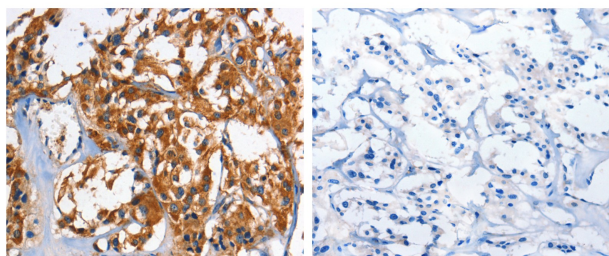
Note

For laboratory research only, not for drug, diagnostic or other use.

## Bioinformation

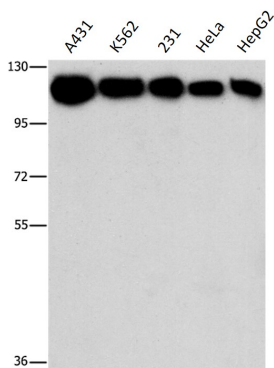
Gene Symbol	HK2
Gene Full Name	hexokinase 2
Background	Hexokinases phosphorylate glucose to produce glucose-6-phosphate, the first step in most glucose metabolism pathways. This gene encodes hexokinase 2, the predominant form found in skeletal muscle. It localizes to the outer membrane of mitochondria. Expression of this gene is insulin-responsive, and studies in rat suggest that it is involved in the increased rate of glycolysis seen in rapidly growing cancer cells. [provided by RefSeq, Apr 2009]

## Images



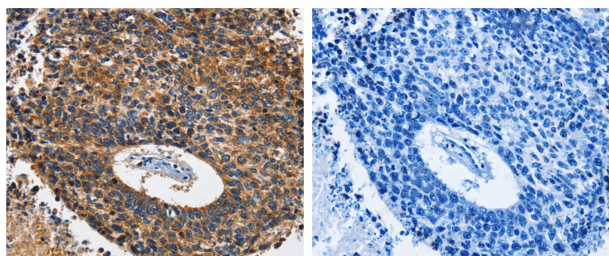
ARG66209 anti-Hexokinase 2 antibody IHC-P image

Immunohistochemistry: Paraffin-embedded Human thyroid cancer tissue stained with ARG66209 anti-Hexokinase 2 antibody (left) at 1:60 dilution, or the same antibody pre-incubated with antigen (right). (Original magnification: X200).



ARG66209 anti-Hexokinase 2 antibody WB image

Western blot: 40 µg of A431, K562, 231, HeLa and HepG2 cell lysates stained with ARG66209 anti-Hexokinase 2 antibody at 1:1200 dilution.



ARG66209 anti-Hexokinase 2 antibody IHC-P image

Immunohistochemistry: Paraffin-embedded Human lung cancer tissue stained with ARG66209 anti-Hexokinase 2 antibody (left) at 1:60 dilution, or the same antibody pre-incubated with antigen (right). (Original magnification: X200).