

## ARG66174 anti-EFHD1 antibody

Package: 100 µg  
Store at: -20°C

### Summary

Product Description	Mouse Monoclonal antibody recognizes EFHD1
Tested Reactivity	Hu, Ms, Rat
Tested Application	ICC/IF, IHC-P
Specificity	The antibody detects endogenous EFHD1 proteins.
Host	Mouse
Clonality	Monoclonal
Target Name	EFHD1
Species	Human
Immunogen	Synthetic peptide of Human EFHD1.
Conjugation	Un-conjugated
Alternate Names	EF-hand domain-containing protein D1; Swiprosin-2; EF-hand domain-containing protein 1; MSTP133; MST133; SWS2; PP3051

### Application Instructions

Application table	Application	Dilution
	ICC/IF	1:100 - 1:200
	IHC-P	1:50 - 1:300

**Application Note**  
IHC-P: Antigen Retrieval: Boil tissue section in Sodium citrate buffer (pH 6.0) for 20 min.  
\* The dilutions indicate recommended starting dilutions and the optimal dilutions or concentrations should be determined by the scientist.

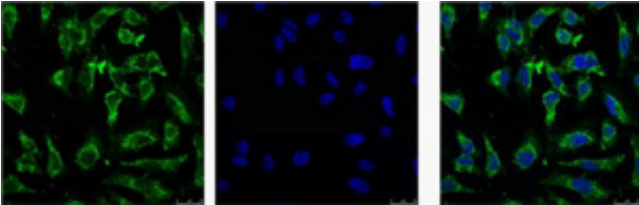
### Properties

Form	Liquid
Purification	Affinity purification with immunogen.
Buffer	PBS (pH 7.4), 0.02% Sodium azide and 50% Glycerol.
Preservative	0.02% Sodium azide
Stabilizer	50% Glycerol
Concentration	1 mg/ml
Storage instruction	For continuous use, store undiluted antibody at 2-8°C for up to a week. For long-term storage, aliquot and store at -20°C. Storage in frost free freezers is not recommended. Avoid repeated freeze/thaw cycles. Suggest spin the vial prior to opening. The antibody solution should be gently mixed before use.
Note	For laboratory research only, not for drug, diagnostic or other use.

## Bioinformation

Gene Symbol	EFHD1
Gene Full Name	EF-hand domain family, member D1
Background	EFHD1 is an EF-hand domain-containing protein that displays increased expression during neuronal differentiation (Tominaga and Tomooka, 2002 [PubMed 12270117]).[supplied by OMIM, Mar 2008]
Calculated Mw	27 kDa

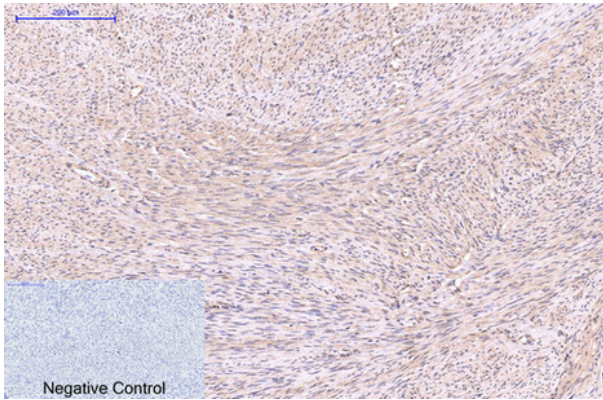
## Images



ARG66174 anti-EFHD1 antibody ICC/IF image

Immunofluorescence: HeLa cells stained with ARG66174 anti-EFHD1 antibody (green).

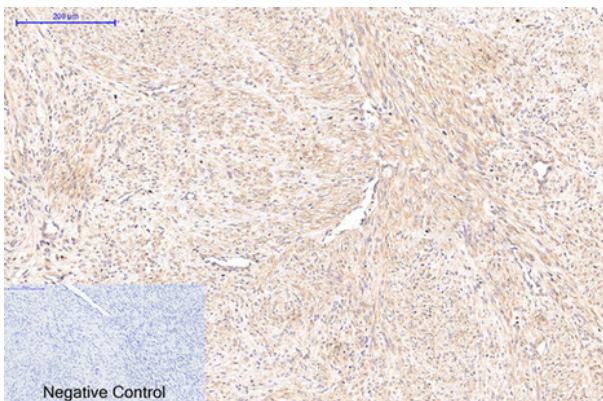
Left: Target. Middle: DAPI. Right: merge image.



ARG66174 anti-EFHD1 antibody IHC-P image

Immunohistochemistry: Paraffin-embedded Human uterus tissue stained with ARG66174 anti-EFHD1 antibody at 1:200 dilution (4°C, overnight). Antigen Retrieval: Boil tissue section in Sodium citrate buffer (pH 6.0) for 20 min.

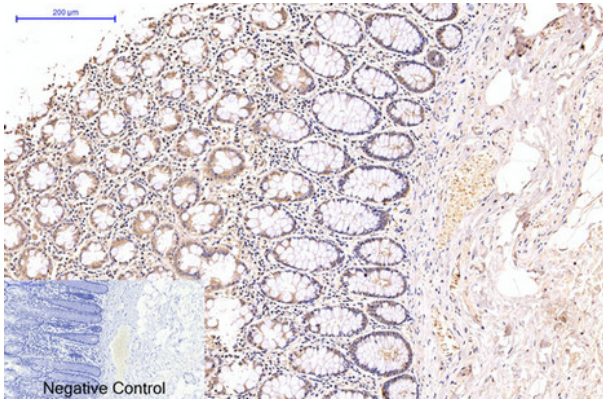
Negative control was used by secondary antibody only.



ARG66174 anti-EFHD1 antibody IHC-P image

Immunohistochemistry: Paraffin-embedded Human uterus cancer tissue stained with ARG66174 anti-EFHD1 antibody at 1:200 dilution (4°C, overnight). Antigen Retrieval: Boil tissue section in Sodium citrate buffer (pH 6.0) for 20 min.

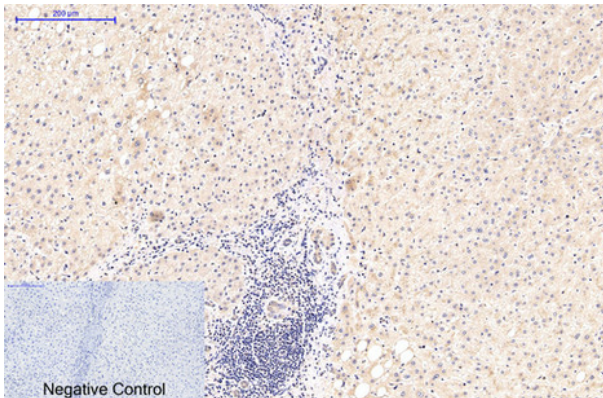
Negative control was used by secondary antibody only.



#### ARG66174 anti-EFHD1 antibody IHC-P image

Immunohistochemistry: Paraffin-embedded Human colon tissue stained with ARG66174 anti-EFHD1 antibody at 1:200 dilution (4°C, overnight). Antigen Retrieval: Boil tissue section in Sodium citrate buffer (pH 6.0) for 20 min.

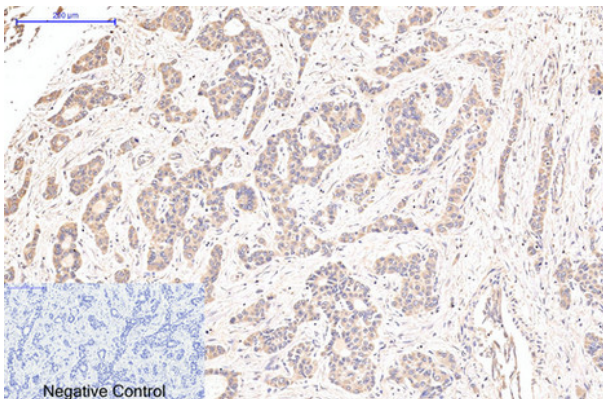
Negative control was used by secondary antibody only.



#### ARG66174 anti-EFHD1 antibody IHC-P image

Immunohistochemistry: Paraffin-embedded Human liver tissue stained with ARG66174 anti-EFHD1 antibody at 1:200 dilution (4°C, overnight). Antigen Retrieval: Boil tissue section in Sodium citrate buffer (pH 6.0) for 20 min.

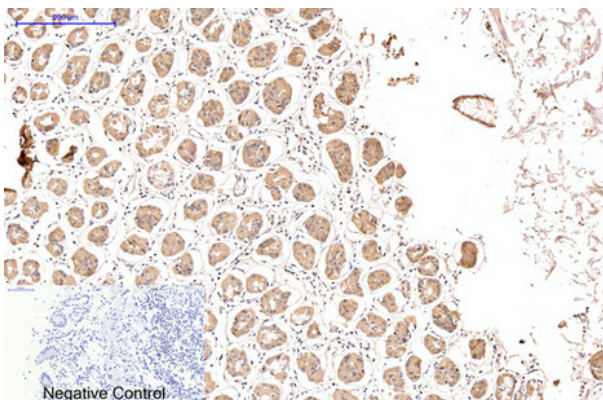
Negative control was used by secondary antibody only.



#### ARG66174 anti-EFHD1 antibody IHC-P image

Immunohistochemistry: Paraffin-embedded Human liver cancer tissue stained with ARG66174 anti-EFHD1 antibody at 1:200 dilution (4°C, overnight). Antigen Retrieval: Boil tissue section in Sodium citrate buffer (pH 6.0) for 20 min.

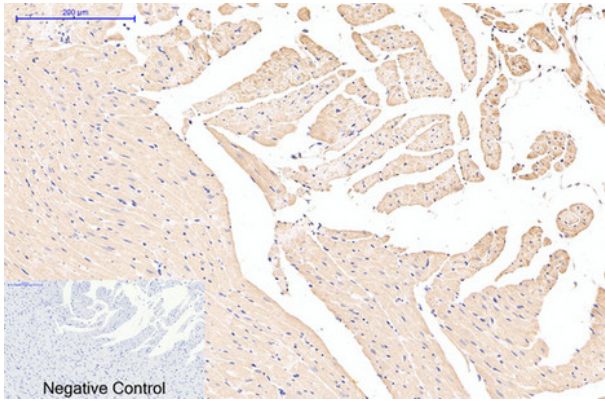
Negative control was used by secondary antibody only.



#### ARG66174 anti-EFHD1 antibody IHC-P image

Immunohistochemistry: Paraffin-embedded Human stomach tissue stained with ARG66174 anti-EFHD1 antibody at 1:200 dilution (4°C, overnight). Antigen Retrieval: Boil tissue section in Sodium citrate buffer (pH 6.0) for 20 min.

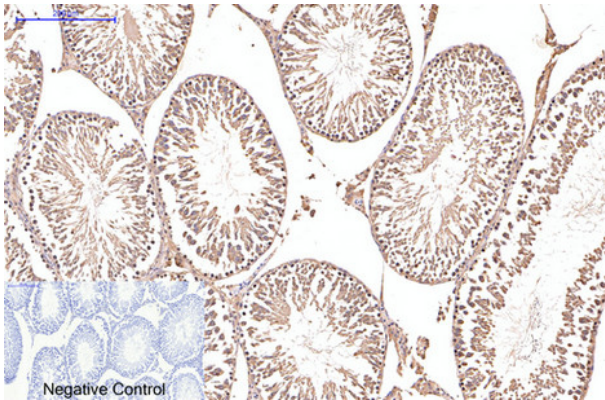
Negative control was used by secondary antibody only.



#### ARG66174 anti-EFHD1 antibody IHC-P image

Immunohistochemistry: Paraffin-embedded Rat heart tissue stained with ARG66174 anti-EFHD1 antibody at 1:200 dilution (4°C, overnight). Antigen Retrieval: Boil tissue section in Sodium citrate buffer (pH 6.0) for 20 min.

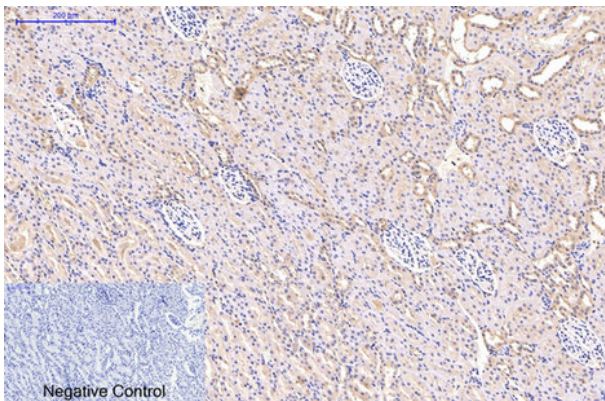
Negative control was used by secondary antibody only.



#### ARG66174 anti-EFHD1 antibody IHC-P image

Immunohistochemistry: Paraffin-embedded Rat testis tissue stained with ARG66174 anti-EFHD1 antibody at 1:200 dilution (4°C, overnight). Antigen Retrieval: Boil tissue section in Sodium citrate buffer (pH 6.0) for 20 min.

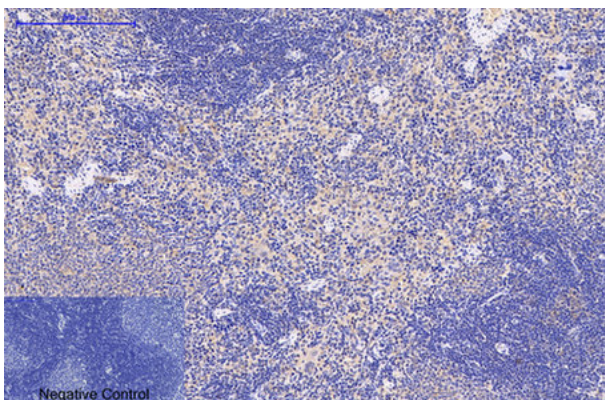
Negative control was used by secondary antibody only.



#### ARG66174 anti-EFHD1 antibody IHC-P image

Immunohistochemistry: Paraffin-embedded Rat kidney tissue stained with ARG66174 anti-EFHD1 antibody at 1:200 dilution (4°C, overnight). Antigen Retrieval: Boil tissue section in Sodium citrate buffer (pH 6.0) for 20 min.

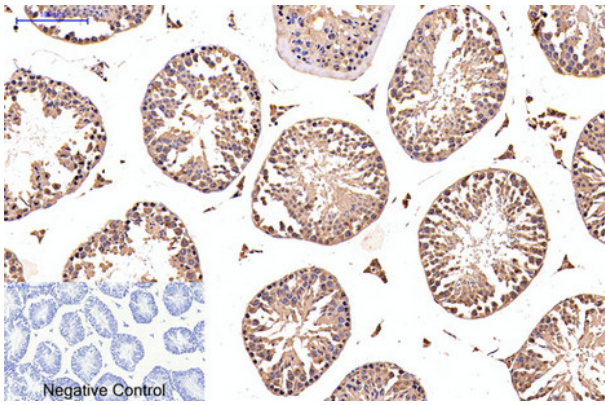
Negative control was used by secondary antibody only.



#### ARG66174 anti-EFHD1 antibody IHC-P image

Immunohistochemistry: Paraffin-embedded Rat spleen tissue stained with ARG66174 anti-EFHD1 antibody at 1:200 dilution (4°C, overnight). Antigen Retrieval: Boil tissue section in Sodium citrate buffer (pH 6.0) for 20 min.

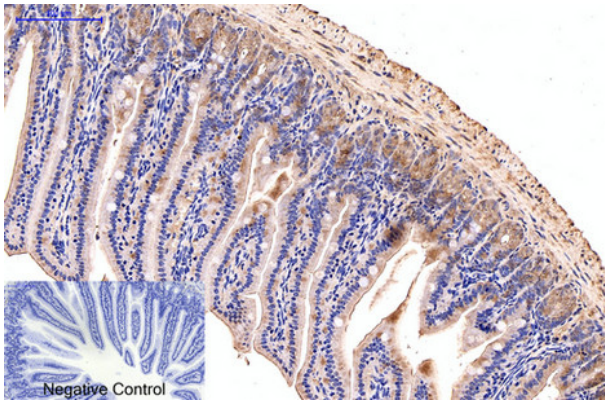
Negative control was used by secondary antibody only.



**ARG66174 anti-EFHD1 antibody IHC-P image**

Immunohistochemistry: Paraffin-embedded Mouse testis tissue stained with ARG66174 anti-EFHD1 antibody at 1:200 dilution (4°C, overnight). Antigen Retrieval: Boil tissue section in Sodium citrate buffer (pH 6.0) for 20 min.

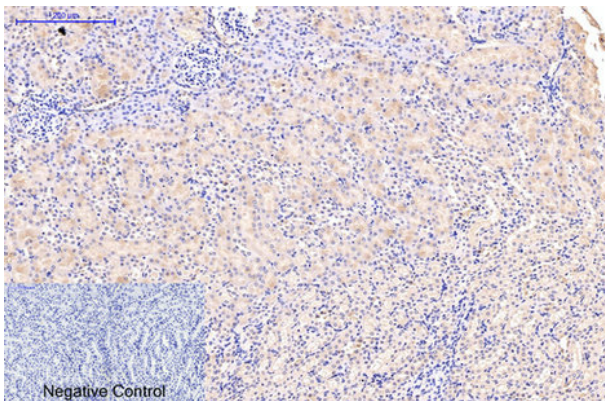
Negative control was used by secondary antibody only.



**ARG66174 anti-EFHD1 antibody IHC-P image**

Immunohistochemistry: Paraffin-embedded Mouse colon tissue stained with ARG66174 anti-EFHD1 antibody at 1:200 dilution (4°C, overnight). Antigen Retrieval: Boil tissue section in Sodium citrate buffer (pH 6.0) for 20 min.

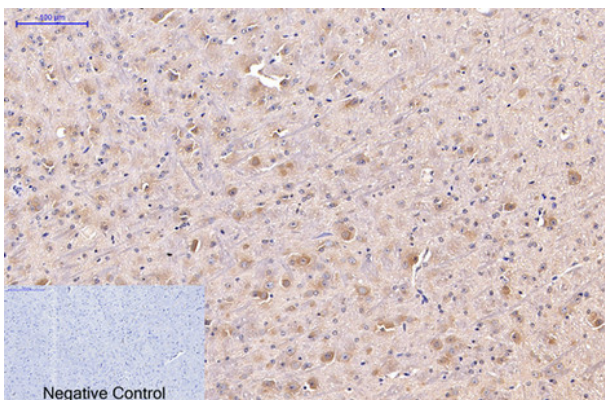
Negative control was used by secondary antibody only.



**ARG66174 anti-EFHD1 antibody IHC-P image**

Immunohistochemistry: Paraffin-embedded Mouse kidney tissue stained with ARG66174 anti-EFHD1 antibody at 1:200 dilution (4°C, overnight). Antigen Retrieval: Boil tissue section in Sodium citrate buffer (pH 6.0) for 20 min.

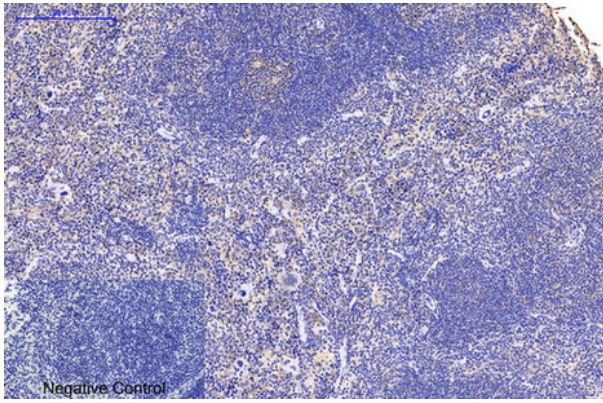
Negative control was used by secondary antibody only.



**ARG66174 anti-EFHD1 antibody IHC-P image**

Immunohistochemistry: Paraffin-embedded Mouse brain tissue stained with ARG66174 anti-EFHD1 antibody at 1:200 dilution (4°C, overnight). Antigen Retrieval: Boil tissue section in Sodium citrate buffer (pH 6.0) for 20 min.

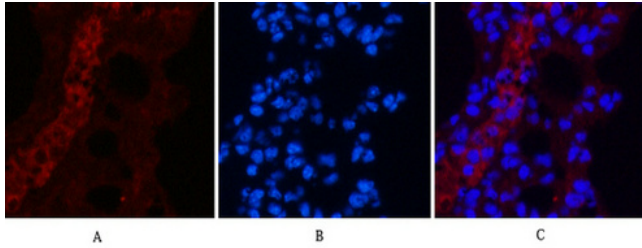
Negative control was used by secondary antibody only.



#### ARG66174 anti-EFHD1 antibody IHC-P image

Immunohistochemistry: Paraffin-embedded Mouse spleen tissue stained with ARG66174 anti-EFHD1 antibody at 1:200 dilution (4°C, overnight). Antigen Retrieval: Boil tissue section in Sodium citrate buffer (pH 6.0) for 20 min.

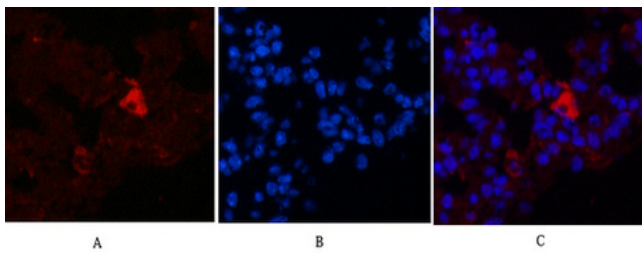
Negative control was used by secondary antibody only.



#### ARG66174 anti-EFHD1 antibody IHC image

Immunohistochemistry: Mouse lung tissue stained with ARG66174 anti-EFHD1 antibody (red) at 1:200 dilution (4°C, overnight).

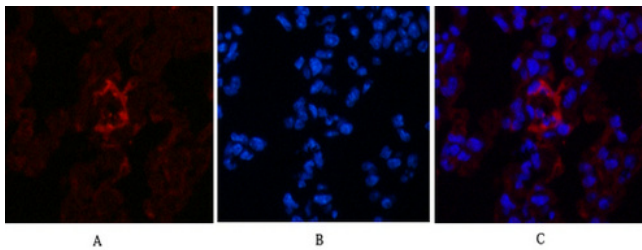
Picture A: Target. Picture B: DAPI. Picture C: merge of A+B.



#### ARG66174 anti-EFHD1 antibody IHC image

Immunohistochemistry: Mouse lung tissue stained with ARG66174 anti-EFHD1 antibody (red) at 1:200 dilution (4°C, overnight).

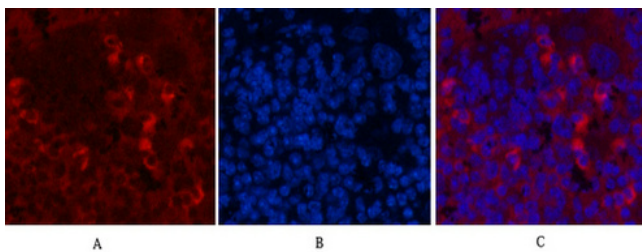
Picture A: Target. Picture B: DAPI. Picture C: merge of A+B.



#### ARG66174 anti-EFHD1 antibody IHC image

Immunohistochemistry: Mouse lung tissue stained with ARG66174 anti-EFHD1 antibody (red) at 1:200 dilution (4°C, overnight).

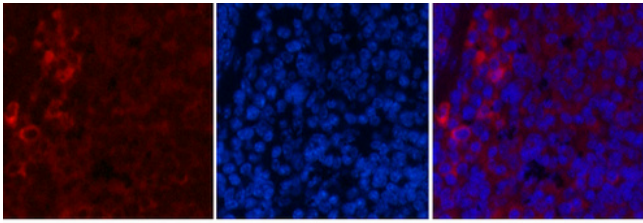
Picture A: Target. Picture B: DAPI. Picture C: merge of A+B.



#### ARG66174 anti-EFHD1 antibody IHC image

Immunohistochemistry: Mouse spleen tissue stained with ARG66174 anti-EFHD1 antibody (red) at 1:200 dilution (4°C, overnight).

Picture A: Target. Picture B: DAPI. Picture C: merge of A+B.



A

B

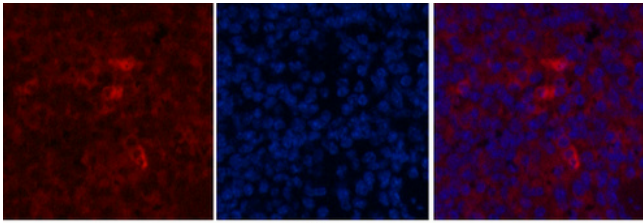
C

ARG66174 anti-EFHD1 antibody IHC image

Immunohistochemistry: Mouse spleen tissue stained with ARG66174 anti-EFHD1 antibody (red) at 1:200 dilution (4°C, overnight).

Picture A: Target. Picture B: DAPI. Picture C: merge of A+B.

---



A

B

C

ARG66174 anti-EFHD1 antibody IHC image

Immunohistochemistry: Mouse spleen tissue stained with ARG66174 anti-EFHD1 antibody (red) at 1:200 dilution (4°C, overnight).

Picture A: Target. Picture B: DAPI. Picture C: merge of A+B.

---