

## ARG66141 anti-Klotho antibody (Biotin)

Package: 50 µg  
Store at: 4°C

### Summary

Product Description	Biotin-conjugated Rabbit Polyclonal antibody recognizes Klotho
Tested Reactivity	Hu
Tested Application	ELISA, WB
Host	Rabbit
Clonality	Polyclonal
Isotype	IgG
Target Name	Klotho
Species	Human
Immunogen	CHO cells derived recombinant Human Klotho. (EPGDGAQTWA RFSRPPAPEA AGLFQGTFPD GFLWAVGSAA YQTEGGWQQH GKGASIWDTF THHPLAPPGD SRNASLPLGA PSPLPATGD VASDSYNNVF RDTEALRELG VTHYRFSISW ARVLPNGSAG VPNREGLRYY RLLERLREL GVQPVVTLYH WDLPQRLQDA YGGWANRALA DHFRDYAELC FRHFGGQVKY WITIDNPYVV AWHGYATGRL APGIRGSPRL GYLVAHNLLL AHAKVWHLYN TFRPTQGGQ VSIALSSHWI NRRMTDHSI KECQKSLDFV LGWFAKPVFI DGDYPESMKN NLSSILPDT ESEKFKIKGT ADFFALCFGP TLSFQLLDPH MKFRQLESPN LRQLLSWIDL EFNHPQIFIV ENGWFVSGTT KRDDAKYMY LKKFIMETLK AIKLDGVDVI GYTAWSLMDG FEWHRGYSIR RGLFYVDFLS QDKMLLPKSS ALFYQKLIK NGFPPLPENQ PLEGTFCDF AWGVVDNYIQ VSQTKPISS LTKPYH)
Conjugation	Biotin
Alternate Names	Klotho; EC 3.2.1.31

### Application Instructions

Application table	Application	Dilution
	ELISA	Direct: 0.25 - 1.0 µg/ml Sandwich: 0.25 - 1.0 µg/ml with ARG66140 as a capture antibody
	WB	0.1 - 0.2 µg/ml
Application Note	* The dilutions indicate recommended starting dilutions and the optimal dilutions or concentrations should be determined by the scientist.	

### Properties

Form	Liquid
Purification	Purified by affinity chromatography.
Buffer	PBS (pH 7.2)
Concentration	1 mg/ml
Storage instruction	Aliquot and store in the dark at 2-8°C. Keep protected from prolonged exposure to light. Avoid repeated freeze/thaw cycles. Suggest spin the vial prior to opening. The antibody solution should be

gently mixed before use.

Note

For laboratory research only, not for drug, diagnostic or other use.

## Bioinformation

---

Database links

[GeneID: 9365 Human](#)

[Swiss-port # Q9UEF7 Human](#)

Gene Symbol

KL

Gene Full Name

klotho

Background

This gene encodes a type-I membrane protein that is related to beta-glucosidases. Reduced production of this protein has been observed in patients with chronic renal failure (CRF), and this may be one of the factors underlying the degenerative processes (e.g., arteriosclerosis, osteoporosis, and skin atrophy) seen in CRF. Also, mutations within this protein have been associated with ageing and bone loss. [provided by RefSeq, Jul 2008]

Function

May have weak glycosidase activity towards glucuronylated steroids. However, it lacks essential active site Glu residues at positions 239 and 872, suggesting it may be inactive as a glycosidase in vivo. May be involved in the regulation of calcium and phosphorus homeostasis by inhibiting the synthesis of active vitamin D (By similarity). Essential factor for the specific interaction between FGF23 and FGFR1 (By similarity).

The Klotho peptide generated by cleavage of the membrane-bound isoform may be an anti-aging circulating hormone which would extend life span by inhibiting insulin/IGF1 signaling. [UniProt]

Calculated Mw

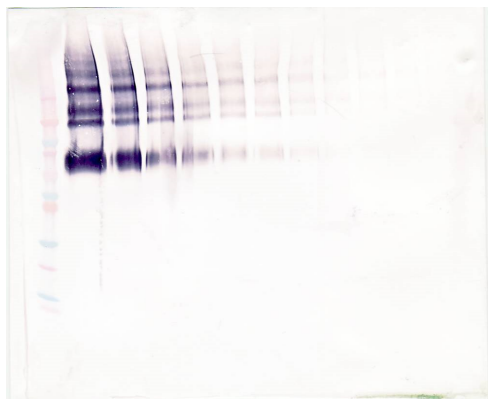
116 kDa

PTM

N-glycosylated.

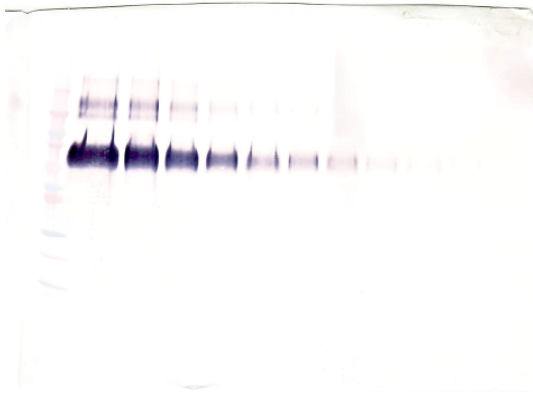
## Images

---



ARG66141 anti-Klotho antibody (Biotin) WB image

Western blot: 250 - 0.24 ng of Human Klotho stained with ARG66141 anti-Klotho antibody (Biotin), under non-reducing conditions.



**ARG66141 anti-Klotho antibody (Biotin) WB image**

Western blot: 250 - 0.24 ng of Human Klotho stained with ARG66141 anti-Klotho antibody (Biotin), under reducing conditions.