

ARG66123 anti-SF20 antibody (Biotin)

Package: 50 µg
Store at: 4°C

Summary

Product Description	Biotin-conjugated Rabbit Polyclonal antibody recognizes SF20
Tested Reactivity	Ms
Tested Application	ELISA, WB
Host	Rabbit
Clonality	Polyclonal
Isotype	IgG
Target Name	SF20
Species	Mouse
Immunogen	E. coli derived recombinant Mouse SF20. (MVSEPTTVPF DVRPGGVVHS FSQDVGPGNK FTCTFTYASQ GGTNEQWQMS LGTSEDSQHF TCTIWRPQGK SYLYFTQFKA ELRGAEIEYA MAYSKAAFER ESDVPLKSEE FEVTKTAVSH RPGAFKAELS KLVIVAKAAR SEL)
Conjugation	Biotin
Alternate Names	EUROIMAGE1875335; IL27w; MYDGF; Interleukin-25; R33729_1; Myeloid-derived growth factor; IL-25; Stromal cell-derived growth factor SF20; IL25; IL27; SF20; C19orf10

Application Instructions

Application table	Application	Dilution
	ELISA	Direct: 0.25 - 1.0 µg/ml Sandwich: 0.25 - 1.0 µg/ml with ARG66122 as a capture antibody
	WB	0.1 - 0.2 µg/ml
Application Note	* The dilutions indicate recommended starting dilutions and the optimal dilutions or concentrations should be determined by the scientist.	

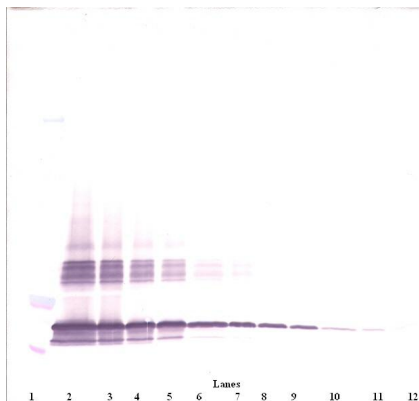
Properties

Form	Liquid
Purification	Purified by affinity chromatography.
Buffer	PBS (pH 7.2)
Concentration	1 mg/ml
Storage instruction	Aliquot and store in the dark at 2-8°C. Keep protected from prolonged exposure to light. Avoid repeated freeze/thaw cycles. Suggest spin the vial prior to opening. The antibody solution should be gently mixed before use.
Note	For laboratory research only, not for drug, diagnostic or other use.

Bioinformation

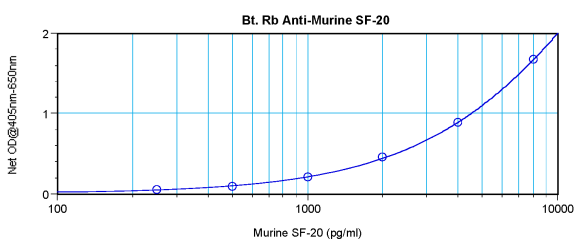
Database links	GeneID: 28106 Mouse Swiss-port # Q9CPT4 Mouse
Gene Symbol	Mydgf
Gene Full Name	myeloid derived growth factor
Background	The protein encoded by this gene was previously thought to support proliferation of lymphoid cells and was considered an interleukin. However, this activity has not been reproducible and the function of this protein is currently unknown. [provided by RefSeq, Jul 2008]
Function	Bone marrow-derived monocyte and paracrine-acting protein that promotes cardiac myocyte survival and adaptive angiogenesis for cardiac protection and/or repair after myocardial infarction (MI). Stimulates endothelial cell proliferation through a MAPK1/3-, STAT3- and CCND1-mediated signaling pathway. Inhibits cardiac myocyte apoptosis in a PI3K/AKT-dependent signaling pathway (By similarity). Involved in endothelial cell proliferation and angiogenesis. [UniProt]
Calculated Mw	19 kDa

Images



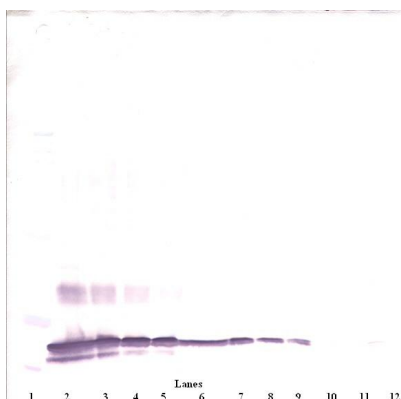
ARG66123 anti-SF20 antibody (Biotin) WB image

Western blot: 250 - 0.24 ng of Mouse SF-20 stained with ARG66123 anti-SF20 antibody (Biotin), under non-reducing conditions.



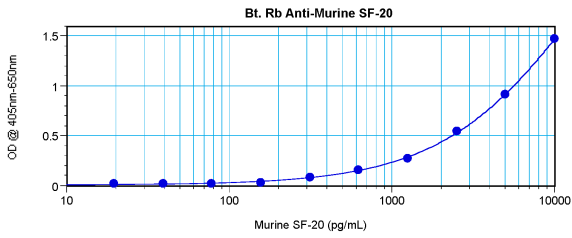
ARG66123 anti-SF20 antibody (Biotin) standard curve image

Direct ELISA: ARG66123 anti-SF20 antibody (Biotin) at 0.25 - 1.0 $\mu\text{g/ml}$ results of a typical standard run with optical density reading at 405 - 650 nm.



ARG66123 anti-SF20 antibody (Biotin) WB image

Western blot: 250 - 0.24 ng of Mouse SF-20 stained with ARG66123 anti-SF20 antibody (Biotin), under reducing conditions.



ARG66123 anti-SF20 antibody (Biotin) standard curve image

Sandwich ELISA: ARG66123 anti-SF20 antibody (Biotin) as a detection antibody at 0.25 - 1.0 $\mu\text{g}/\text{ml}$ combined with ARG66122 anti-SF20 antibody as a capture antibody. Results of a typical standard run with optical density reading at 405 - 650 nm.