

**ARG66094**  
anti-IL22 antibodyPackage: 50 µg  
Store at: -20°C

### Summary

Product Description	Rabbit Polyclonal antibody recognizes IL22
Tested Reactivity	Ms
Tested Application	ELISA, Neut, WB
Host	Rabbit
Clonality	Polyclonal
Isotype	IgG
Target Name	IL22
Species	Mouse
Immunogen	E. coli derived recombinant Mouse IL22. (MLPVNTRCKL EVSNFQQPYI VNRTFMLAKE ASLADNNTDV RLIGEKLFGR VSAKDQC CYLM KQVLNFTLED VLLPQSDRFQ PYMQEVVPFL TKLSNQLSSC HISGDDQNIQ KNVRRRLKETV KKLGESGEIK AIGELDLLFM SLRNACV)
Conjugation	Un-conjugated
Alternate Names	Interleukin-22; zcyto18; IL-TIF; IL-22; IL-21; IL-D110; TIFa; ILTIF; TIFIL-23; IL-10-related T-cell-derived-inducible factor; Cytokine Zcyto18

### Application Instructions

Application table	Application	Dilution
	ELISA	Sandwich: 0.5 - 2.0 µg/ml with ARG66095 as a detection antibody
	Neut	2.0 µg/ml (To yield [ND50] of the biological activity of Murine IL-22 (50.0 ng/ml) )
	WB	0.1 - 0.2 µg/ml
Application Note	* The dilutions indicate recommended starting dilutions and the optimal dilutions or concentrations should be determined by the scientist.	

### Properties

Form	Liquid
Purification	Affinity purification with immunogen.
Buffer	PBS (pH 7.2)
Concentration	1 mg/ml
Storage instruction	For continuous use, store undiluted antibody at 2-8°C for up to a week. For long-term storage, aliquot and store at -20°C or below. Storage in frost free freezers is not recommended. Avoid repeated freeze/thaw cycles. Suggest spin the vial prior to opening. The antibody solution should be gently mixed before use.

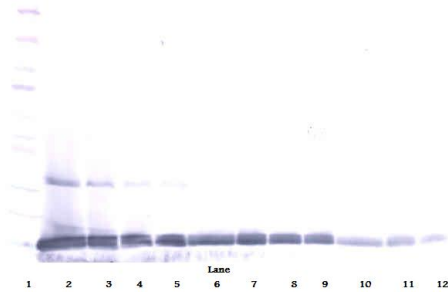
Note

For laboratory research only, not for drug, diagnostic or other use.

## Bioinformation

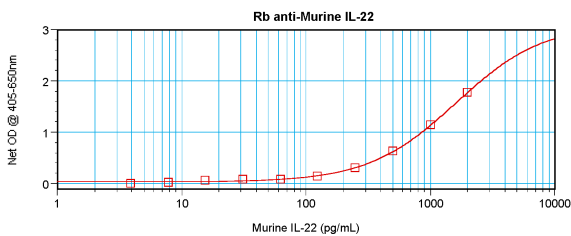
Database links	<a href="#">GeneID: 50929 Mouse</a> <a href="#">Swiss-port # Q9JJY9 Mouse</a>
Gene Symbol	IL22
Gene Full Name	interleukin 22
Function	Cytokine that contributes to the inflammatory response in vivo. [UniProt]
Calculated Mw	20 kDa

## Images



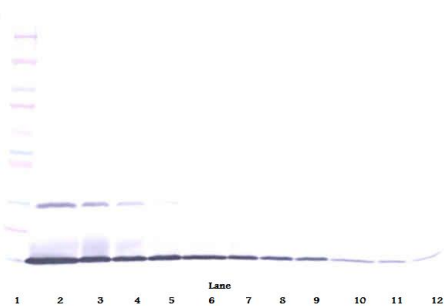
ARG66094 anti-IL22 antibody WB image

Western blot: 250 - 0.24 ng of Mouse IL-22 stained with ARG66094 anti-IL22 antibody, under reducing conditions.



ARG66094 anti-IL22 antibody standard curve image

Sandwich ELISA: ARG66094 anti-IL22 antibody as a capture antibody at 0.5 - 2.0 µg/ml combined with ARG66095 anti-IL22 antibody (Biotin) as a detection antibody. Results of a typical standard run with optical density reading at 405 - 650 nm.



ARG66094 anti-IL22 antibody WB image

Western blot: 250 - 0.24 ng of Mouse IL-22 stained with ARG66094 anti-IL22 antibody, under non-reducing conditions.