

## ARG66093 anti-CCL4 / MIP1 beta antibody (Biotin)

Package: 50 µg  
Store at: 4°C

### Summary

Product Description	Biotin-conjugated Rabbit Polyclonal antibody recognizes CCL4 / MIP1 beta
Tested Reactivity	Ms
Tested Application	ELISA, WB
Host	Rabbit
Clonality	Polyclonal
Isotype	IgG
Target Name	CCL4 / MIP1 beta
Species	Mouse
Immunogen	E. coli derived recombinant Mouse CCL4 / MCP1 beta. (APMGSDPPTS CCFSYTSRQL HRSFVMDYYE TSSLCSKPAV VFLTKRGRQI CANPSEPWVT EYMSDLELN)
Conjugation	Biotin
Alternate Names	ACT2; G-26; HC21; LAG1; LAG-1; MIP1B; SCYA2; SCYA4; MIP1B1; AT744.1; MIP-1-beta

### Application Instructions

Application table	Application	Dilution
	ELISA	Direct: 0.25 - 1.0 µg/ml Sandwich: 0.25 - 1.0 µg/ml with ARG66092 as a capture antibody
	WB	0.1 - 0.2 µg/ml
Application Note	* The dilutions indicate recommended starting dilutions and the optimal dilutions or concentrations should be determined by the scientist.	

### Properties

Form	Liquid
Purification	Purified by affinity chromatography.
Buffer	PBS (pH 7.2)
Concentration	1 mg/ml
Storage instruction	Aliquot and store in the dark at 2-8°C. Keep protected from prolonged exposure to light. Avoid repeated freeze/thaw cycles. Suggest spin the vial prior to opening. The antibody solution should be gently mixed before use.
Note	For laboratory research only, not for drug, diagnostic or other use.

### Bioinformation

Database links [GeneID: 20303 Mouse](#)  
[Swiss-port # P14097 Mouse](#)

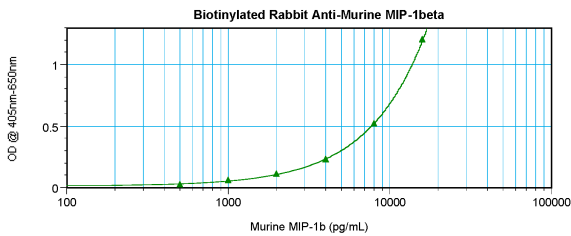
Gene Symbol Ccl4  
Gene Full Name chemokine (C-C motif) ligand 4

Background The protein encoded by this gene is a mitogen-inducible monokine and is one of the major HIV-suppressive factors produced by CD8+ T-cells. The encoded protein is secreted and has chemokinetic and inflammatory functions. [provided by RefSeq, Dec 2012]

Function Monokine with inflammatory and chemokinetic properties. Binds to CCR5. One of the major HIV-suppressive factors produced by CD8+ T-cells. Recombinant MIP-1-beta induces a dose-dependent inhibition of different strains of HIV-1, HIV-2, and simian immunodeficiency virus (SIV). The processed form MIP-1-beta(3-69) retains the abilities to induce down-modulation of surface expression of the chemokine receptor CCR5 and to inhibit the CCR5-mediated entry of HIV-1 in T-cells. MIP-1-beta(3-69) is also a ligand for CCR1 and CCR2 isoform B. [UniProt]

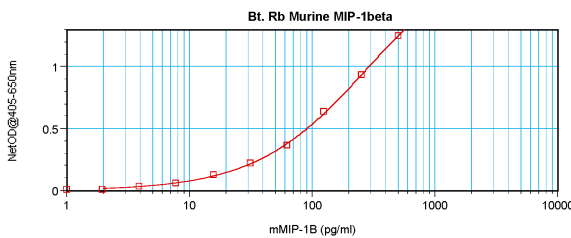
Calculated Mw 10 kDa

## Images



ARG66093 anti-CCL4 / MIP1 beta antibody (Biotin) standard curve image

Direct ELISA: ARG66093 anti-CCL4 / MIP1 beta antibody (Biotin) at 0.25 - 1.0 µg/ml results of a typical standard run with optical density reading at 405 - 650 nm.



ARG66093 anti-CCL4 / MIP1 beta antibody (Biotin) standard curve image

Sandwich ELISA: ARG66093 anti-CCL4 / MIP1 beta antibody (Biotin) as a detection antibody at 0.25 - 1.0 µg/ml combined with ARG66092 anti-CCL4 / MCP1 beta antibody as a capture antibody. Results of a typical standard run with optical density reading at 405 - 650 nm.