

ARG66084 anti-IL20 antibody

Package: 50 µg
Store at: -20°C

Summary

Product Description	Goat Polyclonal antibody recognizes IL20
Tested Reactivity	Hu
Tested Application	ELISA, WB
Host	Goat
Clonality	Polyclonal
Isotype	IgG
Target Name	IL20
Species	Human
Immunogen	E. coli derived recombinant Human IL20. (MLKTLNLGSC VIATNLQEIR NGFSEIRGSV QAKDGNIDIR ILRRTESLQD TKPANRCCLL RHLRLYLDR VFKNYQTPDH YTLRKISSLA NSFLTIKKDL RLCHAHMTCH CGEEMKKYS QILSHFEKLE PQAQAVKALG ELDILLQWME ETE)
Conjugation	Un-conjugated
Alternate Names	Interleukin-20; IL-20; IL10D; Cytokine Zcyto10; ZCYTO10

Application Instructions

Application table	Application	Dilution
	ELISA	Sandwich: 0.5 - 2.0 µg/ml with ARG66085 as a detection antibody
	WB	0.1 - 0.2 µg/ml
Application Note	* The dilutions indicate recommended starting dilutions and the optimal dilutions or concentrations should be determined by the scientist.	

Properties

Form	Liquid
Purification	Affinity purification with immunogen.
Buffer	PBS (pH 7.2)
Concentration	1 mg/ml
Storage instruction	For continuous use, store undiluted antibody at 2-8°C for up to a week. For long-term storage, aliquot and store at -20°C or below. Storage in frost free freezers is not recommended. Avoid repeated freeze/thaw cycles. Suggest spin the vial prior to opening. The antibody solution should be gently mixed before use.
Note	For laboratory research only, not for drug, diagnostic or other use.

Bioinformation

Database links

[GeneID: 50604 Human](#)

[Swiss-port # Q9NYY1 Human](#)

Gene Symbol

IL20

Gene Full Name

interleukin 20

Background

The protein encoded by this gene is a cytokine structurally related to interleukin 10 (IL10). This cytokine has been shown to transduce its signal through signal transducer and activator of transcription 3 (STAT3) in keratinocytes. A specific receptor for this cytokine is found to be expressed in skin and upregulated dramatically in psoriatic skin, suggesting a role for this protein in epidermal function and psoriasis. [provided by RefSeq, Jul 2008]

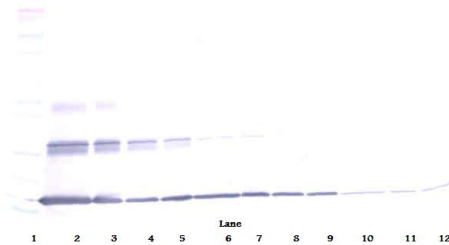
Function

Proinflammatory and angiogenic cytokine that may be involved in epidermal function and psoriasis. Angiogenic and proliferative activities are antagonized by IL10. May act through STAT3. [UniProt]

Calculated Mw

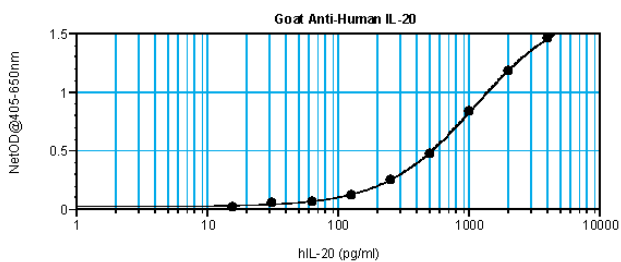
20 kDa

Images



ARG66084 anti-IL20 antibody WB image

Western blot: 250 - 0.24 ng of Human IL-20 stained with ARG66084 anti-IL20 antibody, under non-reducing conditions.



ARG66084 anti-IL20 antibody standard curve image

Sandwich ELISA: ARG66084 anti-IL20 antibody as a capture antibody at 0.5 - 2.0 $\mu\text{g/ml}$ combined with ARG66085 anti-IL20 antibody (Biotin) as a detection antibody. Results of a typical standard run with optical density reading at 405 - 650 nm.