

## ARG66078 anti-NNT1 antibody (Biotin)

Package: 50 µg  
Store at: 4°C

### Summary

Product Description	Biotin-conjugated Rabbit Polyclonal antibody recognizes NNT1
Tested Reactivity	Hu
Tested Application	ELISA
Host	Rabbit
Clonality	Polyclonal
Isotype	IgG
Target Name	NNT1
Species	Human
Immunogen	E. coli derived recombinant Human NNT1. (MLNRTGDPGP GPSIQKTYDL TRYLEHQLRS LAGTYLNYLG PPFNEPDFNP PRLGAETLPR ATVDLEWRS LNDKLRILTQN YEAYSHLLCY LRGLNRQAAT AELRRSLAHF CTSLQGLLS IAGVMAALGY PLPQPLPGTE PTWTPGPAHS DFLQKMDDFW LLKELQTWLW RSAKDFNRLK KKMQPPAAAV TLHLGAHGF)
Conjugation	Biotin
Alternate Names	NNT-1; BSF-3; CISS2; Novel neurotrophin-1; NR6; Cardiotrophin-like cytokine factor 1; B-cell-stimulating factor 3; CLC; BSF3; NNT1

### Application Instructions

Application table	Application	Dilution
	ELISA	Direct: 0.25 - 1.0 µg/ml Sandwich: 0.25 - 1.0 µg/ml with ARG66077 as a capture antibody

**Application Note** \* The dilutions indicate recommended starting dilutions and the optimal dilutions or concentrations should be determined by the scientist.

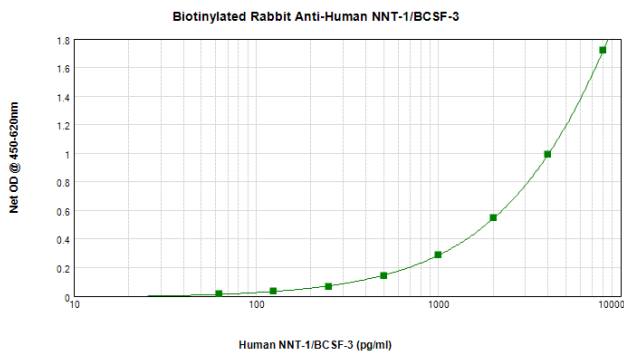
### Properties

Form	Liquid
Purification	Purified by affinity chromatography.
Buffer	PBS (pH 7.2)
Concentration	1 mg/ml
Storage instruction	Aliquot and store in the dark at 2-8°C. Keep protected from prolonged exposure to light. Avoid repeated freeze/thaw cycles. Suggest spin the vial prior to opening. The antibody solution should be gently mixed before use.
Note	For laboratory research only, not for drug, diagnostic or other use.

## Bioinformation

Database links	<a href="#">GeneID: 23529 Human</a> <a href="#">Swiss-port # Q9UBD9 Human</a>
Gene Symbol	CLCF1
Gene Full Name	cardiotrophin-like cytokine factor 1
Background	This gene is a member of the glycoprotein (gp)130 cytokine family and encodes cardiotrophin-like cytokine factor 1 (CLCF1). CLCF1 forms a heterodimer complex with cytokine receptor-like factor 1 (CRLF1). This dimer competes with ciliary neurotrophic factor (CNTF) for binding to the ciliary neurotrophic factor receptor (CNTFR) complex, and activates the Jak-STAT signaling cascade. CLCF1 can be actively secreted from cells by forming a complex with soluble type I CRLF1 or soluble CNTFR. CLCF1 is a potent neurotrophic factor, B-cell stimulatory agent and neuroendocrine modulator of pituitary corticotroph function. Defects in CLCF1 cause cold-induced sweating syndrome 2 (CISS2). This syndrome is characterized by a profuse sweating after exposure to cold as well as congenital physical abnormalities of the head and spine. Alternative splicing results in multiple transcript variants encoding distinct isoforms.[provided by RefSeq, Oct 2009]
Function	Cytokine with B-cell stimulating capability. Binds to and activates the ILST/gp130 receptor. [UniProt]
Calculated Mw	25 kDa

## Images



ARG66078 anti-NNT1 antibody (Biotin) standard curve image

Sandwich ELISA: ARG66078 anti-NNT1 antibody (Biotin) as a detection antibody at 0.25 - 1.0 µg/ml combined with ARG66077 anti-NNT1 antibody as a capture antibody. Results of a typical standard run with optical density reading at 405 - 650 nm.