

ARG66077 anti-NNT1 antibody

Package: 50 µg
Store at: -20°C

Summary

| | |
|---------------------|---|
| Product Description | Rabbit Polyclonal antibody recognizes NNT1 |
| Tested Reactivity | Hu |
| Tested Application | ELISA |
| Host | Rabbit |
| Clonality | Polyclonal |
| Isotype | IgG |
| Target Name | NNT1 |
| Species | Human |
| Immunogen | E. coli derived recombinant Human NNT1. (MLNRTGDPGP GPSIQKTYDL TRYLEHQLRS LAGTYLNYLG PPFNEPDFNP PRLGAETLPR ATVDLEWRS LNDKLRITQN YEAYSHLLCY LRGLNRQAAT AELRRSLAHF CTSLQGLLGS IAGVMAALGY PLPQPLPGTE PTWTPGPAHS DFLQKMDDFW LLKELQTLWLV RSKDFNRLK KKMQPAAAV TLHLGAHGF) |
| Conjugation | Un-conjugated |
| Alternate Names | NNT-1; BSF-3; CISS2; Novel neurotrophin-1; NR6; Cardiotrophin-like cytokine factor 1; B-cell-stimulating factor 3; CLC; BSF3; NNT1 |

Application Instructions

| Application table | Application | Dilution |
|-------------------|--|---|
| | ELISA | Sandwich: 0.5 - 2.0 µg/ml with ARG66078 as a detection antibody |
| Application Note | * The dilutions indicate recommended starting dilutions and the optimal dilutions or concentrations should be determined by the scientist. | |

Properties

| | |
|---------------------|--|
| Form | Liquid |
| Purification | Affinity purification with immunogen. |
| Buffer | PBS (pH 7.2) |
| Concentration | 1 mg/ml |
| Storage instruction | For continuous use, store undiluted antibody at 2-8°C for up to a week. For long-term storage, aliquot and store at -20°C or below. Storage in frost free freezers is not recommended. Avoid repeated freeze/thaw cycles. Suggest spin the vial prior to opening. The antibody solution should be gently mixed before use. |
| Note | For laboratory research only, not for drug, diagnostic or other use. |

Bioinformation

Database links

[GeneID: 23529 Human](#)

[Swiss-port # Q9UBD9 Human](#)

Gene Symbol

CLCF1

Gene Full Name

cardiotrophin-like cytokine factor 1

Background

This gene is a member of the glycoprotein (gp)130 cytokine family and encodes cardiotrophin-like cytokine factor 1 (CLCF1). CLCF1 forms a heterodimer complex with cytokine receptor-like factor 1 (CRLF1). This dimer competes with ciliary neurotrophic factor (CNTF) for binding to the ciliary neurotrophic factor receptor (CNTFR) complex, and activates the Jak-STAT signaling cascade. CLCF1 can be actively secreted from cells by forming a complex with soluble type I CRLF1 or soluble CNTFR. CLCF1 is a potent neurotrophic factor, B-cell stimulatory agent and neuroendocrine modulator of pituitary corticotroph function. Defects in CLCF1 cause cold-induced sweating syndrome 2 (CISS2). This syndrome is characterized by a profuse sweating after exposure to cold as well as congenital physical abnormalities of the head and spine. Alternative splicing results in multiple transcript variants encoding distinct isoforms.[provided by RefSeq, Oct 2009]

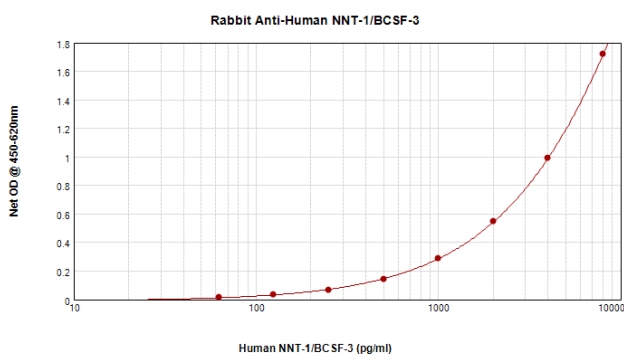
Function

Cytokine with B-cell stimulating capability. Binds to and activates the ILST/gp130 receptor. [UniProt]

Calculated Mw

25 kDa

Images



ARG66077 anti-NNT1 antibody standard curve image

Sandwich ELISA: ARG66077 anti-NNT1 antibody as a capture antibody at 0.5 - 2.0 µg/ml combined with ARG66078 anti-NNT1 antibody (Biotin) as a detection antibody. Results of a typical standard run with optical density reading at 405 - 650 nm.