

ARG66069 anti-IL3 beta antibody (Biotin)

Package: 50 µg
Store at: 4°C

Summary

Product Description	Biotin-conjugated Goat Polyclonal antibody recognizes IL3 beta
Tested Reactivity	Rat
Tested Application	ELISA, WB
Host	Goat
Clonality	Polyclonal
Isotype	IgG
Target Name	IL3 beta
Species	Rat
Immunogen	E. coli derived recombinant Rat IL3 beta. (MISDRGSDAH HLLRTLDCRT IALEILVKLP YPQVSGLNNS DDKANLRNST LRRVNLDEFL KSQEEFDSQD TTDIKSKLQK LKCCIPAAAS DSVLPGVYNK DLDDFKKKLR FYVIHLKDLQ PVSVSRPPQP TSSSDNFRPM TVEC)
Conjugation	Biotin
Alternate Names	MCGF; Mast cell growth factor; P-cell-stimulating factor; Hematopoietic growth factor; IL-3; Interleukin-3; Multipotential colony-stimulating factor; MULTI-CSF

Application Instructions

Application table	Application	Dilution
	ELISA	Direct: 0.25 - 1.0 µg/ml Sandwich: 0.25 - 1.0 µg/ml with ARG66068 as a capture antibody
	WB	0.1 - 0.2 µg/ml
Application Note	* The dilutions indicate recommended starting dilutions and the optimal dilutions or concentrations should be determined by the scientist.	

Properties

Form	Liquid
Purification	Purified by affinity chromatography.
Buffer	PBS (pH 7.2)
Concentration	1 mg/ml
Storage instruction	Aliquot and store in the dark at 2-8°C. Keep protected from prolonged exposure to light. Avoid repeated freeze/thaw cycles. Suggest spin the vial prior to opening. The antibody solution should be gently mixed before use.
Note	For laboratory research only, not for drug, diagnostic or other use.

Bioinformation

Background

The protein encoded by this gene is a potent growth promoting cytokine. This cytokine is capable of supporting the proliferation of a broad range of hematopoietic cell types. It is involved in a variety of cell activities such as cell growth, differentiation and apoptosis. This cytokine has been shown to also possess neurotrophic activity, and it may be associated with neurologic disorders. [provided by RefSeq, Jul 2008]

Function

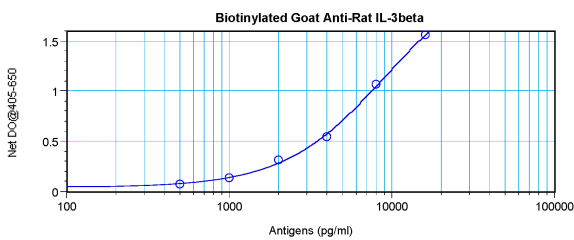
Granulocyte/macrophage colony-stimulating factors are cytokines that act in hematopoiesis by controlling the production, differentiation, and function of 2 related white cell populations of the blood, the granulocytes and the monocytes-macrophages.

This CSF induces granulocytes, macrophages, mast cells, stem cells, erythroid cells, eosinophils and megakaryocytes. [UniProt]

Calculated Mw

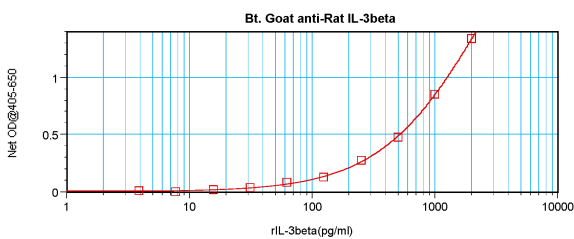
17 kDa

Images



ARG66069 anti-IL3 beta antibody (Biotin) standard curve image

Direct ELISA: ARG66069 anti-IL3 beta antibody (Biotin) at 0.25 - 1.0 $\mu\text{g}/\text{ml}$ results of a typical standard run with optical density reading at 405 - 650 nm.



ARG66069 anti-IL3 beta antibody (Biotin) standard curve image

Sandwich ELISA: ARG66069 anti-IL3 beta antibody (Biotin) as a detection antibody at 0.25 - 1.0 $\mu\text{g}/\text{ml}$ combined with ARG66068 anti-IL3 beta antibody as a capture antibody. Results of a typical standard run with optical density reading at 405 - 650 nm.