

## ARG66068 anti-IL3 beta antibody

Package: 50 µg  
Store at: -20°C

### Summary

Product Description	Goat Polyclonal antibody recognizes IL3 beta
Tested Reactivity	Rat
Tested Application	ELISA, Neut, WB
Host	Goat
Clonality	Polyclonal
Isotype	IgG
Target Name	IL3 beta
Species	Rat
Immunogen	E. coli derived recombinant Rat IL3 beta. (MISDRGSDAH HLLRTLDCRT IALEILVKLP YPQVSGLNNS DDKANLRNST LRRVNLDEFL KSQEEFDSQD TTDIKSKLQK LKCCIPAAAS DSVLPGVYNK DLDDFKKKLR FYVIHLKDLQ PVSVSRPPQP TSSSDNFRPM TVEC)
Conjugation	Un-conjugated
Alternate Names	MCGF; Mast cell growth factor; P-cell-stimulating factor; Hematopoietic growth factor; IL-3; Interleukin-3; Multipotential colony-stimulating factor; MULTI-CSF

### Application Instructions

Application table	Application	Dilution
	ELISA	Sandwich: 0.5 - 2.0 µg/ml with ARG66069 as a detection antibody
	Neut	0.68 - 1.03 µg/ml (To yield [ND50] of the biological activity of Rat IL-3β (150 ng/ml) )
	WB	0.1 - 0.2 µg/ml

**Application Note** \* The dilutions indicate recommended starting dilutions and the optimal dilutions or concentrations should be determined by the scientist.

### Properties

Form	Liquid
Purification	Affinity purification with immunogen.
Buffer	PBS (pH 7.2)
Concentration	1 mg/ml
Storage instruction	For continuous use, store undiluted antibody at 2-8°C for up to a week. For long-term storage, aliquot and store at -20°C or below. Storage in frost free freezers is not recommended. Avoid repeated freeze/thaw cycles. Suggest spin the vial prior to opening. The antibody solution should be gently mixed before use.
Note	For laboratory research only, not for drug, diagnostic or other use.

## Bioinformation

### Background

The protein encoded by this gene is a potent growth promoting cytokine. This cytokine is capable of supporting the proliferation of a broad range of hematopoietic cell types. It is involved in a variety of cell activities such as cell growth, differentiation and apoptosis. This cytokine has been shown to also possess neurotrophic activity, and it may be associated with neurologic disorders. [provided by RefSeq, Jul 2008]

### Function

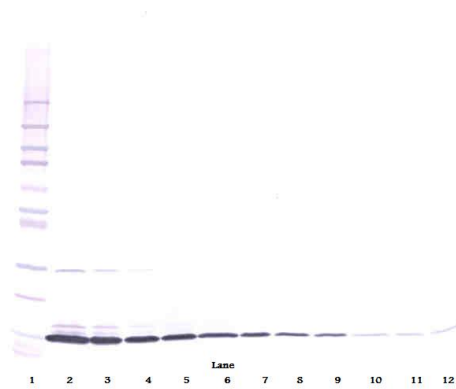
Granulocyte/macrophage colony-stimulating factors are cytokines that act in hematopoiesis by controlling the production, differentiation, and function of 2 related white cell populations of the blood, the granulocytes and the monocytes-macrophages.

This CSF induces granulocytes, macrophages, mast cells, stem cells, erythroid cells, eosinophils and megakaryocytes. [UniProt]

### Calculated Mw

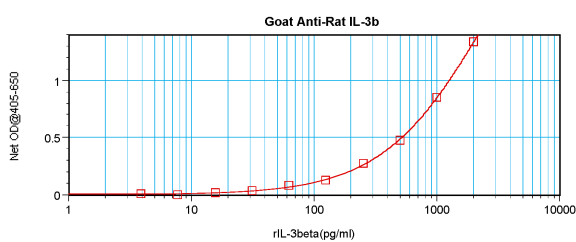
17 kDa

## Images



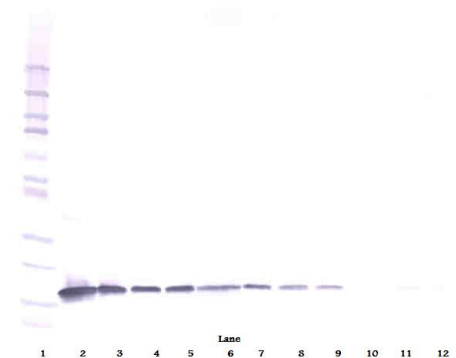
ARG66068 anti-IL3 beta antibody WB image

Western blot: 250 - 0.24 ng of Rat IL-3 $\beta$  stained with ARG66068 anti-IL3 beta antibody, under non-reducing conditions.



ARG66068 anti-IL3 beta antibody standard curve image

Sandwich ELISA: ARG66068 anti-IL3 beta antibody as a capture antibody at 0.5 - 2.0  $\mu$ g/ml combined with ARG66069 anti-IL3 beta antibody (Biotin) as a detection antibody. Results of a typical standard run with optical density reading at 405 - 650 nm.



ARG66068 anti-IL3 beta antibody WB image

Western blot: 250 - 0.24 ng of Rat IL-3 $\beta$  stained with ARG66068 anti-IL3 beta antibody, under reducing conditions.