

ARG66031 anti-CX3CL1 antibody

Package: 50 µg
Store at: -20°C

Summary

Product Description	Rabbit Polyclonal antibody recognizes CX3CL1
Tested Reactivity	Hu
Tested Application	ELISA, IHC-P, WB
Host	Rabbit
Clonality	Polyclonal
Isotype	IgG
Target Name	CX3CL1
Species	Human
Immunogen	E. coli derived recombinant Human CX3CL1. (QHHGVTKCNI TCSKMTSKIP VALLIHQQN QASCGKRAII LETRQHRLFC ADPKEQWVKD AMQHLDRQAA ALTRNG)
Conjugation	Un-conjugated
Alternate Names	neurotactin; CXC3; C3Xkine; NTN; NTT; C-X3-C motif chemokine 1; CXC3C; Neurotactin; ABCD-3; SCYD1; Fractalkine; Small-inducible cytokine D1; CX3C membrane-anchored chemokine; fractalkine

Application Instructions

Application table	Application	Dilution
	ELISA	Sandwich: 0.5 - 2.0 µg/ml with ARG66032 as a detection antibody
	IHC-P	0.25 µg/ml
	WB	0.1 - 0.2 µg/ml
Application Note	IHC-P: Antigen Retrieval: Boil tissue section in Sodium Citrate buffer (pH 6.0) followed by cooling at RT for 20 min. * The dilutions indicate recommended starting dilutions and the optimal dilutions or concentrations should be determined by the scientist.	

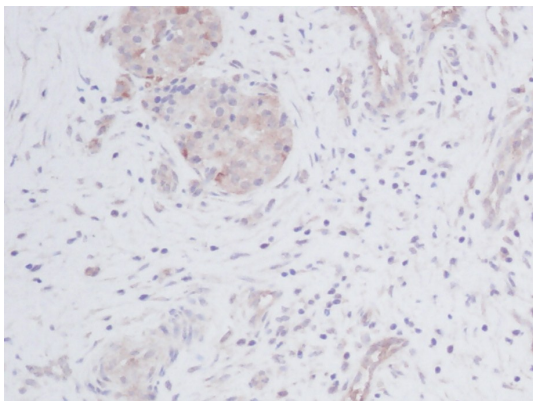
Properties

Form	Liquid
Purification	Affinity purification with immunogen.
Buffer	PBS (pH 7.2)
Concentration	1 mg/ml
Storage instruction	For continuous use, store undiluted antibody at 2-8°C for up to a week. For long-term storage, aliquot and store at -20°C or below. Storage in frost free freezers is not recommended. Avoid repeated freeze/thaw cycles. Suggest spin the vial prior to opening. The antibody solution should be gently mixed before use.

Bioinformation

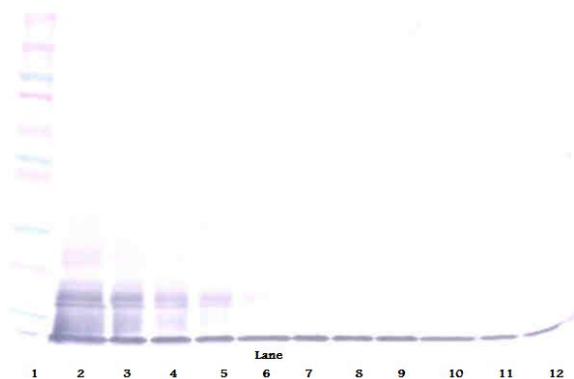
Database links	GeneID: 6376 Human Swiss-port # P78423 Human
Gene Symbol	CX3CL1
Gene Full Name	chemokine (C-X3-C motif) ligand 1
Function	The soluble form is chemotactic for T-cells and monocytes, but not for neutrophils. The membrane-bound form promotes adhesion of those leukocytes to endothelial cells. May play a role in regulating leukocyte adhesion and migration processes at the endothelium. Binds to CX3CR1. [UniProt]
Calculated Mw	42 kDa
PTM	A soluble short 95 kDa form may be released by proteolytic cleavage from the long membrane-anchored form. O-glycosylated with core 1 or possibly core 8 glycans.

Images



ARG66031 anti-CX3CL1 antibody IHC-P image

Immunohistochemistry: Formalin-fixed and paraffin-embedded sections of Human pancreas malignant ductal adenocarcinoma. The recommended ARG66031 anti-CX3CL1 antibody concentration is 0.25 µg/ml with an overnight incubation at 4°C. An HRP-labeled polymer detection system was used with a DAB chromogen. Antigen Retrieval: Boil tissue section in Sodium Citrate buffer (pH 6.0) followed by cooling at RT for 20 min.



ARG66031 anti-CX3CL1 antibody WB image

Western blot: 250 - 0.24 ng of Human Fractalkine stained with ARG66031 anti-CX3CL1 antibody, under non-reducing conditions.

ARG66031 anti-CX3CL1 antibody WB image

Western blot: 250 - 0.24 ng of Human Fractalkine stained with ARG66031 anti-CX3CL1 antibody, under reducing conditions.

