

## ARG66018 anti-IL5 antibody (Biotin)

Package: 50 µg  
Store at: 4°C

### Summary

Product Description	Biotin-conjugated Rabbit Polyclonal antibody recognizes IL5
Tested Reactivity	Ms
Tested Application	ELISA, WB
Host	Rabbit
Clonality	Polyclonal
Isotype	IgG
Target Name	IL5
Species	Mouse
Immunogen	E. coli derived recombinant Mouse IL5. (MEIPMSTVVK ETLTQLSAHR ALLTSNETMR LPVPTHKNHQ LCIGEIQGL DILKNQTVRG GTVEMLFQNL SLIKKYIDRQ KEKCGEERRR TRQFLDYLQE FLGVMSTEWA MEG)
Conjugation	Biotin
Alternate Names	Eosinophil differentiation factor; EDF; IL-5; TRF; T-cell replacing factor; B-cell differentiation factor I; Interleukin-5

### Application Instructions

Application table	Application	Dilution
	ELISA	Direct: ~ 1.0 µg/ml Sandwich: 0.25 - 1.0 µg/ml with ARG66017 as a capture antibody
	WB	0.1 - 0.2 µg/ml
Application Note	* The dilutions indicate recommended starting dilutions and the optimal dilutions or concentrations should be determined by the scientist.	

### Properties

Form	Liquid
Purification	Purified by affinity chromatography.
Buffer	PBS (pH 7.2)
Concentration	1 mg/ml
Storage instruction	Aliquot and store in the dark at 2-8°C. Keep protected from prolonged exposure to light. Avoid repeated freeze/thaw cycles. Suggest spin the vial prior to opening. The antibody solution should be gently mixed before use.
Note	For laboratory research only, not for drug, diagnostic or other use.

Database links [GeneID: 16191 Mouse](#)  
[Swiss-port # P04401 Mouse](#)

Gene Symbol IL5

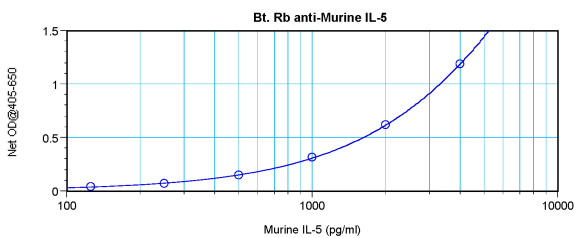
Gene Full Name interleukin 5

**Background** This gene encodes a cytokine that acts as a growth and differentiation factor for both B cells and eosinophils. The encoded cytokine plays a major role in the regulation of eosinophil formation, maturation, recruitment and survival. The increased production of this cytokine may be related to pathogenesis of eosinophil-dependent inflammatory diseases. This cytokine functions by binding to its receptor, which is a heterodimer, whose beta subunit is shared with the receptors for interleukin 3 (IL3) and colony stimulating factor 2 (CSF2/GM-CSF). This gene is located on chromosome 5 within a cytokine gene cluster which includes interleukin 4 (IL4), interleukin 13 (IL13), and CSF2. This gene, IL4, and IL13 may be regulated coordinately by long-range regulatory elements spread over 120 kilobases on chromosome 5q31. [provided by RefSeq, Jul 2013]

**Function** Factor that induces terminal differentiation of late-developing B-cells to immunoglobulin secreting cells. [UniProt]

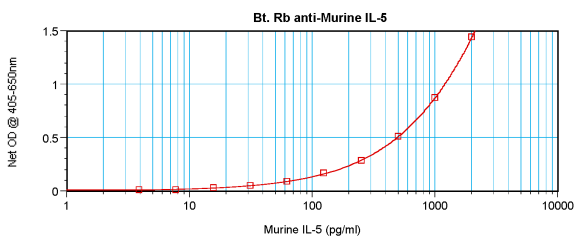
Calculated Mw 15 kDa

## Images



ARG66018 anti-IL5 antibody (Biotin) standard curve image

Direct ELISA: ARG66018 anti-IL5 antibody (Biotin) at ~ 1.0 µg/ml results of a typical standard run with optical density reading at 405 - 650 nm.



ARG66018 anti-IL5 antibody (Biotin) standard curve image

Sandwich ELISA: ARG66018 anti-IL5 antibody (Biotin) as a detection antibody at 0.25 - 1.0 µg/ml combined with ARG66017 anti-IL5 antibody as a capture antibody. Results of a typical standard run with optical density reading at 405 - 650 nm.