

## ARG65809 anti-SH3BGRL3 antibody

Package: 100 µl, 50 µl  
Store at: -20°C

### Summary

Product Description	Rabbit Polyclonal antibody recognizes SH3BGRL3
Tested Reactivity	Hu, Ms, Rat
Predict Reactivity	Bov, Mk, Rb
Tested Application	WB
Specificity	Recognizes endogenous levels of SH3BGRL3 protein.
Host	Rabbit
Clonality	Polyclonal
Isotype	IgG
Target Name	SH3BGRL3
Species	Human
Immunogen	KLH-conjugated synthetic peptide around the center region of Human SH3BGRL3.
Conjugation	Un-conjugated
Alternate Names	SH3 domain-binding glutamic acid-rich-like protein 3; TIP-B1; SH3BP-1; SH3 domain-binding protein 1; HEL-S-297

### Application Instructions

Application table	Application	Dilution
	WB	1:500 - 1:1000

**Application Note** \* The dilutions indicate recommended starting dilutions and the optimal dilutions or concentrations should be determined by the scientist.

### Properties

Form	Liquid
Purification	Affinity purification with immunogen.
Buffer	Liquid (pH 7.3), 0.42% Potassium phosphate, 0.87% NaCl, 0.01% Sodium azide and 30% Glycerol.
Preservative	0.01% Sodium azide
Stabilizer	30% Glycerol
Storage instruction	For continuous use, store undiluted antibody at 2-8°C for up to a week. For long-term storage, aliquot and store at -20°C. Storage in frost free freezers is not recommended. Avoid repeated freeze/thaw cycles. Suggest spin the vial prior to opening. The antibody solution should be gently mixed before use.
Note	For laboratory research only, not for drug, diagnostic or other use.

## Bioinformation

---

Database links	<a href="#">GeneID: 73723 Mouse</a> <a href="#">GeneID: 83442 Human</a> <a href="#">Swiss-port # Q91VW3 Mouse</a> <a href="#">Swiss-port # Q9H299 Human</a>
Gene Symbol	SH3BGRL3
Gene Full Name	SH3 domain binding glutamate-rich protein like 3
Function	Could act as a modulator of glutaredoxin biological activity. [UniProt]
Calculated Mw	10 kDa

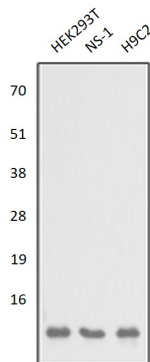
## Images

---



ARG65809 anti-SH3BGRL3 antibody WB image

Western blot: 30 µg of U87 cell lysate stained with ARG65809 anti-SH3BGRL3 antibody at 1:500 dilution.



ARG65809 anti-SH3BGRL3 antibody WB image

Western blot: HEK293T, NS-1 and H9C2 whole cell lysates stained with ARG65809 anti-SH3BGRL3 antibody.