

ARG65789
anti-KLF2 antibodyPackage: 100 µg
Store at: -20°C

Summary

Product Description	Goat Polyclonal antibody recognizes KLF2
Tested Reactivity	Hu
Predict Reactivity	Ms, Rat, Cow, Dog, Pig
Tested Application	WB
Host	Goat
Clonality	Polyclonal
Isotype	IgG
Target Name	KLF2
Species	Human
Immunogen	Synthetic peptide around the N-terminus of Human KLF2 protein (NP_057354.1). (ALSEPILPSFST-C)
Conjugation	Un-conjugated
Alternate Names	LKLF; Krueppel-like factor 2; Lung krueppel-like factor

Application Instructions

Application table	<table><thead><tr><th>Application</th><th>Dilution</th></tr></thead><tbody><tr><td>WB</td><td>1 - 3 µg/ml</td></tr></tbody></table>	Application	Dilution	WB	1 - 3 µg/ml
Application	Dilution				
WB	1 - 3 µg/ml				
Application Note	WB: Recommend incubate at RT for 1h. * The dilutions indicate recommended starting dilutions and the optimal dilutions or concentrations should be determined by the scientist.				

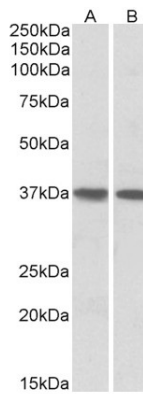
Properties

Form	Liquid
Purification	Affinity purification with immunogen.
Buffer	Tris saline (pH 7.3), 0.02% Sodium azide and 0.5% BSA.
Preservative	0.02% Sodium azide
Stabilizer	0.5% BSA
Concentration	0.5 mg/ml
Storage instruction	For continuous use, store undiluted antibody at 2-8°C for up to a week. For long-term storage, aliquot and store at -20°C or below. Storage in frost free freezers is not recommended. Avoid repeated freeze/thaw cycles. Suggest spin the vial prior to opening. The antibody solution should be gently mixed before use.
Note	For laboratory research only, not for drug, diagnostic or other use.

Bioinformation

Database links	GeneID: 10365 Human Swiss-port # Q9Y5W3 Human
Gene Symbol	KLF2
Gene Full Name	Kruppel-like factor 2
Background	Kruppel-like factors (KLFs) are a family of broadly expressed zinc finger transcription factors. KLF2 regulates T-cell trafficking by promoting expression of the lipid-binding receptor S1P1 (S1PR1; MIM 601974) and the selectin CD62L (SELL; MIM 153240) (summary by Weinreich et al., 2009 [PubMed 19592277]).[supplied by OMIM, Feb 2011]
Function	Binds to the CACCC box in the beta-globin gene promoter and activates transcription. [UniProt]
Calculated Mw	37.4 kDa (NP_057354.1)
PTM	Ubiquitinated. Polyubiquitination involves WWP1 and leads to proteasomal degradation of this protein (By similarity).

Images



ARG65789 anti-KLF2 antibody WB image

Western blot: 35 µg of Human heart (A) and lung (B) lysates stained with ARG65789 anti-KLF2 antibody at 1 µg/ml dilution (1 hour).