

ARG65745 anti-Maspin antibody

Package: 100 µl
Store at: -20°C

Summary

Product Description	Rabbit Polyclonal antibody recognizes Maspin
Tested Reactivity	Hu, Ms
Tested Application	IHC-P, WB
Host	Rabbit
Clonality	Polyclonal
Isotype	IgG
Target Name	Maspin
Species	Human
Immunogen	Fusion protein of Human Maspin
Conjugation	Un-conjugated
Alternate Names	PI-5; PI5; Maspin; Serpin B5; maspin; Peptidase inhibitor 5

Application Instructions

Application table	Application	Dilution
	IHC-P	1:100 - 1:300
	WB	1:1000 - 1:5000
Application Note	* The dilutions indicate recommended starting dilutions and the optimal dilutions or concentrations should be determined by the scientist.	
Positive Control	WB: Mouse esophagus and human cervical cancer tissue IHC-P: Human esophagus cancer and human lung cancer	

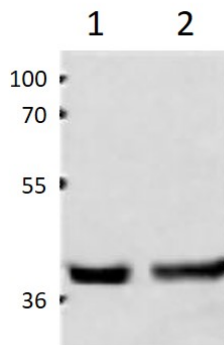
Properties

Form	Liquid
Purification	Affinity purification with immunogen.
Buffer	PBS (pH 7.4), 0.05% Sodium azide and 40% Glycerol
Preservative	0.05% Sodium azide
Stabilizer	40% Glycerol
Concentration	2 mg/ml
Storage instruction	For continuous use, store undiluted antibody at 2-8°C for up to a week. For long-term storage, aliquot and store at -20°C. Storage in frost free freezers is not recommended. Avoid repeated freeze/thaw cycles. Suggest spin the vial prior to opening. The antibody solution should be gently mixed before use.
Note	For laboratory research only, not for drug, diagnostic or other use.

Bioinformation

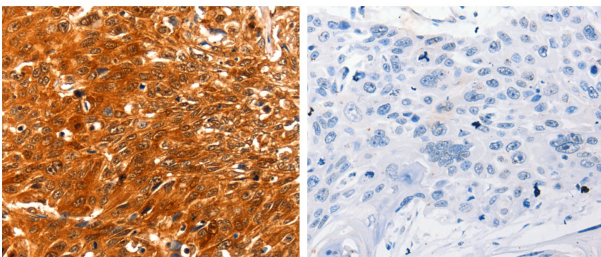
Database links	GeneID: 20724 Mouse GeneID: 5268 Human Swiss-port # P36952 Human Swiss-port # P70124 Mouse
Gene Symbol	SERPINB5
Gene Full Name	serpin peptidase inhibitor, clade B (ovalbumin), member 5
Function	Tumor suppressor. It blocks the growth, invasion, and metastatic properties of mammary tumors. As it does not undergo the S (stressed) to R (relaxed) conformational transition characteristic of active serpins, it exhibits no serine protease inhibitory activity. [UniProt]
Calculated Mw	42 kDa

Images



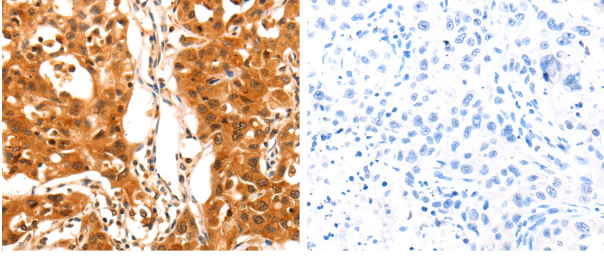
ARG65745 anti-Maspin antibody WB image

Western blot: 40 µg of 1) Mouse esophagus tissue, and 2) Human cervical cancer tissue stained with ARG65745 anti-Maspin antibody at 1:1000 dilution.



ARG65745 anti-Maspin antibody IHC-P image

Immunohistochemistry: paraffin-embedded Human esophagus cancer tissue stained with ARG65745 anti-Maspin antibody (left) at 1:60 dilution, or the same antibody pre-incubated with antigen (right). (Original magnification: X200)



ARG65745 anti-Maspin antibody IHC-P image

Immunohistochemistry: paraffin-embedded Human lung cancer tissue stained with ARG65745 anti-Maspin antibody (left) at 1:60 dilution, or the same antibody pre-incubated with antigen (right). (Original magnification: X200)