

ARG65705 anti-CRABP2 antibody

Package: 100 µl
Store at: -20°C

Summary

Product Description	Rabbit Polyclonal antibody recognizes CRABP2
Tested Reactivity	Hu, Ms, Rat
Tested Application	ICC/IF, WB
Host	Rabbit
Clonality	Polyclonal
Isotype	IgG
Target Name	CRABP2
Species	Human
Immunogen	Recombinant protein of Human CRABP2
Conjugation	Un-conjugated
Alternate Names	Cellular retinoic acid-binding protein II; CRABP-II; RBP6; Cellular retinoic acid-binding protein 2

Application Instructions

Predict Reactivity Note	Rat						
Application table	<table><thead><tr><th>Application</th><th>Dilution</th></tr></thead><tbody><tr><td>ICC/IF</td><td>1:20 - 1:100</td></tr><tr><td>WB</td><td>1:500 - 1:2000</td></tr></tbody></table>	Application	Dilution	ICC/IF	1:20 - 1:100	WB	1:500 - 1:2000
Application	Dilution						
ICC/IF	1:20 - 1:100						
WB	1:500 - 1:2000						
Application Note	* The dilutions indicate recommended starting dilutions and the optimal dilutions or concentrations should be determined by the scientist.						
Positive Control	SW480						

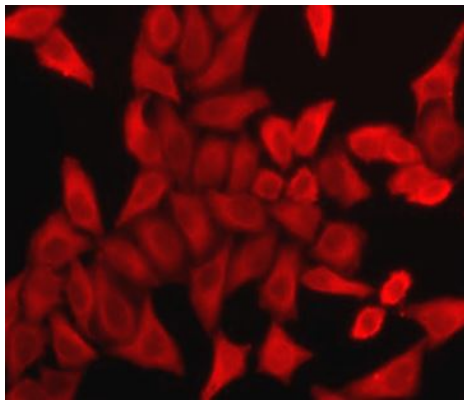
Properties

Form	Liquid
Purification	Affinity purification with immunogen.
Buffer	PBS (pH 7.3), 0.02% Sodium azide and 50% Glycerol
Preservative	0.02% Sodium azide
Stabilizer	50% Glycerol
Storage instruction	For continuous use, store undiluted antibody at 2-8°C for up to a week. For long-term storage, aliquot and store at -20°C. Storage in frost free freezers is not recommended. Avoid repeated freeze/thaw cycles. Suggest spin the vial prior to opening. The antibody solution should be gently mixed before use.
Note	For laboratory research only, not for drug, diagnostic or other use.

Bioinformation

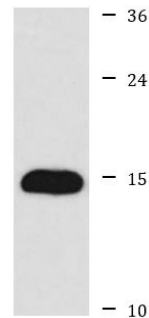
Gene Symbol	CRABP2
Gene Full Name	cellular retinoic acid binding protein 2
Background	This gene encodes a member of the retinoic acid (RA, a form of vitamin A) binding protein family and lipocalin/cytosolic fatty-acid binding protein family. The protein is a cytosol-to-nuclear shuttling protein, which facilitates RA binding to its cognate receptor complex and transfer to the nucleus. It is involved in the retinoid signaling pathway, and is associated with increased circulating low-density lipoprotein cholesterol. Alternatively spliced transcript variants encoding the same protein have been found for this gene.[provided by RefSeq, Dec 2010]
Function	Transports retinoic acid to the nucleus. Regulates the access of retinoic acid to the nuclear retinoic acid receptors. [UniProt]
Research Area	Cancer antibody; Gene Regulation antibody; Signaling Transduction antibody
Calculated Mw	16 kDa
PTM	Sumoylated in response to retinoic acid binding, sumoylation is critical for dissociation from ER and subsequent nuclear translocation.

Images



ARG65705 anti-CRABP2 antibody ICC/IF image

Immunofluorescence: MCF7 cells stained with ARG65705 anti-CRABP2 antibody.



SW480

ARG65705 anti-CRABP2 antibody WB image

Western blot: SW480 cell lysate stained with ARG65705 anti-CRABP2 antibody.