

ARG65704 anti-ChAT antibody

Package: 100 µl
Store at: -20°C

Summary

Product Description	Rabbit Polyclonal antibody recognizes ChAT
Tested Reactivity	Hu, Ms, Rat
Tested Application	IHC-P, WB
Host	Rabbit
Clonality	Polyclonal
Isotype	IgG
Target Name	ChAT
Species	Human
Immunogen	Recombinant protein of Human ChAT
Conjugation	Un-conjugated
Alternate Names	CMS1A; Choline acetylase; CHOACTase; CHOACTASE; EC 2.3.1.6; CMS6; Choline O-acetyltransferase; ChAT; CMS1A2

Application Instructions

Predict Reactivity Note	Rat						
Application table	<table><thead><tr><th>Application</th><th>Dilution</th></tr></thead><tbody><tr><td>IHC-P</td><td>1:50 - 1:200</td></tr><tr><td>WB</td><td>1:500 - 1:2000</td></tr></tbody></table>	Application	Dilution	IHC-P	1:50 - 1:200	WB	1:500 - 1:2000
Application	Dilution						
IHC-P	1:50 - 1:200						
WB	1:500 - 1:2000						
Application Note	* The dilutions indicate recommended starting dilutions and the optimal dilutions or concentrations should be determined by the scientist.						
Positive Control	Raji						

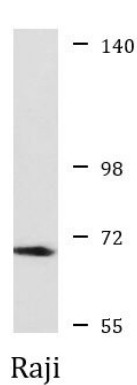
Properties

Form	Liquid
Purification	Affinity purification with immunogen.
Buffer	PBS (pH 7.3), 0.02% Sodium azide and 50% Glycerol
Preservative	0.02% Sodium azide
Stabilizer	50% Glycerol
Storage instruction	For continuous use, store undiluted antibody at 2-8°C for up to a week. For long-term storage, aliquot and store at -20°C. Storage in frost free freezers is not recommended. Avoid repeated freeze/thaw cycles. Suggest spin the vial prior to opening. The antibody solution should be gently mixed before use.
Note	For laboratory research only, not for drug, diagnostic or other use.

Bioinformation

Database links	GeneID: 1103 Human GeneID: 12647 Mouse Swiss-port # P28329 Human
Gene Symbol	CHAT
Gene Full Name	choline O-acetyltransferase
Background	This gene encodes an enzyme which catalyzes the biosynthesis of the neurotransmitter acetylcholine. This gene product is a characteristic feature of cholinergic neurons, and changes in these neurons may explain some of the symptoms of Alzheimer's disease. Polymorphisms in this gene have been associated with Alzheimer's disease and mild cognitive impairment. Mutations in this gene are associated with congenital myasthenic syndrome associated with episodic apnea. Multiple transcript variants encoding different isoforms have been found for this gene, and some of these variants have been shown to encode more than one isoform. [provided by RefSeq, May 2010]
Function	Catalyzes the reversible synthesis of acetylcholine (ACh) from acetyl CoA and choline at cholinergic synapses. [UniProt]
Research Area	Neuroscience antibody
Calculated Mw	83 kDa

Images



ARG65704 anti-ChAT antibody WB image

Western blot: Raji cell lysate stained with ARG65704 anti-ChAT antibody.