

ARG65701 anti-NBR1 antibody

Package: 50 µl
Store at: -20°C

Summary

Product Description	Rabbit Polyclonal antibody recognizes NBR1
Tested Reactivity	Hu, Ms, Rat
Tested Application	ICC/IF, WB
Host	Rabbit
Clonality	Polyclonal
Isotype	IgG
Target Name	NBR1
Species	Human
Immunogen	Recombinant protein of Human NBR1.
Conjugation	Un-conjugated
Alternate Names	Protein 1A1-3B; Neighbor of BRCA1 gene 1 protein; Membrane component chromosome 17 surface marker 2; Cell migration-inducing gene 19 protein; M17S2; IA13B; Next to BRCA1 gene 1 protein; MIG19; 1A1-3B

Application Instructions

Predict Reactivity Note	Monkey, Rat						
Application table	<table><thead><tr><th>Application</th><th>Dilution</th></tr></thead><tbody><tr><td>ICC/IF</td><td>1:50 - 1:100</td></tr><tr><td>WB</td><td>1:500 - 1:2000</td></tr></tbody></table>	Application	Dilution	ICC/IF	1:50 - 1:100	WB	1:500 - 1:2000
Application	Dilution						
ICC/IF	1:50 - 1:100						
WB	1:500 - 1:2000						
Application Note	* The dilutions indicate recommended starting dilutions and the optimal dilutions or concentrations should be determined by the scientist.						
Positive Control	HeLa						

Properties

Form	Liquid
Purification	Affinity purification with immunogen.
Buffer	PBS (pH 7.3), 0.02% Sodium azide and 50% Glycerol
Preservative	0.02% Sodium azide
Stabilizer	50% Glycerol
Storage instruction	For continuous use, store undiluted antibody at 2-8°C for up to a week. For long-term storage, aliquot and store at -20°C. Storage in frost free freezers is not recommended. Avoid repeated freeze/thaw cycles. Suggest spin the vial prior to opening. The antibody solution should be gently mixed before use.

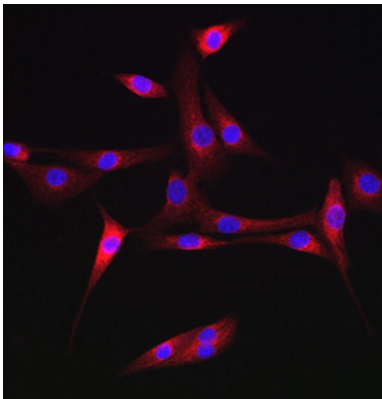
Note

For laboratory research only, not for drug, diagnostic or other use.

Bioinformation

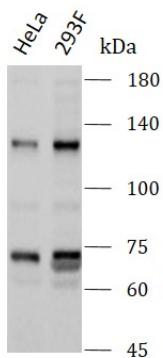
Gene Symbol	NBR1
Gene Full Name	neighbor of BRCA1 gene 1
Background	The protein encoded by this gene was originally identified as an ovarian tumor antigen monitored in ovarian cancer. The encoded protein contains a B-box/coiled-coil motif, which is present in many genes with transformation potential. It functions as a specific autophagy receptor for the selective autophagic degradation of peroxisomes by forming intracellular inclusions with ubiquitylated autophagic substrates. This gene is located on a region of chromosome 17q21.1 that is in close proximity to the BRCA1 tumor suppressor gene. Alternative splicing of this gene results in multiple transcript variants. [provided by RefSeq, Apr 2014]
Function	Acts probably as a receptor for selective autophagosomal degradation of ubiquitinated targets. [UniProt]
Research Area	Cell Biology and Cellular Response antibody
Calculated Mw	107 kDa

Images



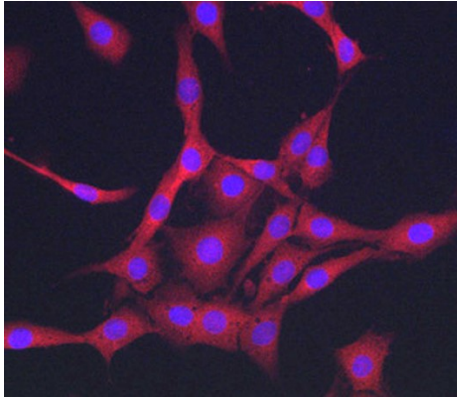
ARG65701 anti-NBR1 antibody ICC/IF image

Immunofluorescence: NIH/3T3 stained with ARG65701 anti-NBR1 antibody at 1:50 dilution.



ARG65701 anti-NBR1 antibody WB image

Western blot: HeLa and 293F stained with ARG65701 anti-NBR1 antibody at 1:400 dilution.



ARG65701 anti-NBR1 antibody ICC/IF image

Immunofluorescence: PC-12 stained with ARG65701 anti-NBR1 antibody at 1:50 dilution.