

## ARG65687 anti-Dopamine Transporter antibody

Package: 100 µg  
Store at: -20°C

### Summary

Product Description	Goat Polyclonal antibody recognizes Dopamine Transporter
Tested Reactivity	Hu
Tested Application	WB
Host	Goat
Clonality	Polyclonal
Isotype	IgG
Target Name	Dopamine Transporter
Species	Human
Immunogen	Synthetic peptide around the center region of Human Dopamine Transporter (C-QLTSSTLTNPRQSP).
Conjugation	Un-conjugated
Alternate Names	PKDYS; Sodium-dependent dopamine transporter; Solute carrier family 6 member 3; DAT1; DAT; DA transporter

### Application Instructions

Application table	Application	Dilution
	WB	1 - 3 µg/ml
Application Note	WB: Recommend incubate at RT for 1h. * The dilutions indicate recommended starting dilutions and the optimal dilutions or concentrations should be determined by the scientist.	

### Properties

Form	Liquid
Purification	Affinity purification with immunogen.
Buffer	Tris saline (pH 7.3), 0.02% Sodium azide and 0.5% BSA
Preservative	0.02% Sodium azide
Stabilizer	0.5% BSA
Concentration	0.5 mg/ml
Storage instruction	For continuous use, store undiluted antibody at 2-8°C for up to a week. For long-term storage, aliquot and store at -20°C or below. Storage in frost free freezers is not recommended. Avoid repeated freeze/thaw cycles. Suggest spin the vial prior to opening. The antibody solution should be gently mixed before use.
Note	For laboratory research only, not for drug, diagnostic or other use.

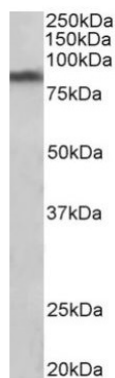
## Bioinformation

---

Database links	<a href="#">GeneID: 6531 Human</a> <a href="#">Swiss-port # Q01959 Human</a>
Gene Symbol	SLC6A3
Gene Full Name	solute carrier family 6 (neurotransmitter transporter), member 3
Background	This gene encodes a dopamine transporter which is a member of the sodium- and chloride-dependent neurotransmitter transporter family. The 3' UTR of this gene contains a 40 bp tandem repeat, referred to as a variable number tandem repeat or VNTR, which can be present in 3 to 11 copies. Variation in the number of repeats is associated with idiopathic epilepsy, attention-deficit hyperactivity disorder, dependence on alcohol and cocaine, susceptibility to Parkinson disease and protection against nicotine dependence.[provided by RefSeq, Nov 2009]
Function	Amine transporter. Terminates the action of dopamine by its high affinity sodium-dependent reuptake into presynaptic terminals. [UniProt]
Research Area	Neuroscience antibody
Calculated Mw	68.5 kDa (NP_001035.1)

## Images

---



ARG65687 anti-Dopamine Transporter antibody WB image

Western blot: 35 µg of Human Substantia nigra lysate stained with ARG65687 anti-Dopamine Transporter antibody at 1 µg/ml dilution (incubate 1 hour).