

## ARG65670 anti-CA1 / Carbonic Anhydrase 1 antibody

Package: 100 µl, 50 µl  
Store at: -20°C

### Summary

Product Description	Rabbit Polyclonal antibody recognizes CA1 / Carbonic Anhydrase 1
Tested Reactivity	Ms, Rat
Tested Application	WB
Host	Rabbit
Clonality	Polyclonal
Isotype	IgG
Target Name	CA1 / Carbonic Anhydrase 1
Species	Human
Immunogen	Full length fusion protein of Human CA1.
Conjugation	Un-conjugated
Alternate Names	Carbonic anhydrase I; EC 4.2.1.1; Carbonate dehydratase I; Carbonic anhydrase B; Car1; HEL-S-11; CA-I; Carbonic anhydrase 1; CAB

### Application Instructions

Application table	Application	Dilution
	WB	1:500 - 1:2000
Application Note	* The dilutions indicate recommended starting dilutions and the optimal dilutions or concentrations should be determined by the scientist.	
Positive Control	WB: Mouse liver tissue	

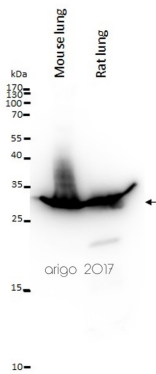
### Properties

Form	Liquid
Purification	Affinity purification with immunogen.
Buffer	PBS (pH 7.3), 0.05% Sodium azide and 50% Glycerol
Preservative	0.05% Sodium azide
Stabilizer	50% Glycerol
Concentration	0.9 mg/ml
Storage instruction	For continuous use, store undiluted antibody at 2-8°C for up to a week. For long-term storage, aliquot and store at -20°C. Storage in frost free freezers is not recommended. Avoid repeated freeze/thaw cycles. Suggest spin the vial prior to opening. The antibody solution should be gently mixed before use.
Note	For laboratory research only, not for drug, diagnostic or other use.

## Bioinformation

Gene Symbol	CA1
Gene Full Name	carbonic anhydrase I
Background	Carbonic anhydrases (CAs) are a large family of zinc metalloenzymes that catalyze the reversible hydration of carbon dioxide. They participate in a variety of biological processes, including respiration, calcification, acid-base balance, bone resorption, and the formation of aqueous humor, cerebrospinal fluid, saliva and gastric acid. They show extensive diversity in tissue distribution and in their subcellular localization. This CA1 gene is closely linked to the CA2 and CA3 genes on chromosome 8. It encodes a cytosolic protein that is found at the highest level in erythrocytes. Allelic variants of this gene have been described in some populations. Alternative splicing results in multiple transcript variants. [provided by RefSeq, May 2014]
Function	Reversible hydration of carbon dioxide. Can hydrates cyanamide to urea. [UniProt]
Research Area	Cell Biology and Cellular Response antibody
Calculated Mw	29 kDa

## Images



ARG65670 anti-CA1 / Carbonic Anhydrase 1 antibody WB image

Western blot: 20 µg of Mouse lung and Rat lung lysates stained with ARG65670 anti-CA1 / Carbonic Anhydrase 1 antibody at 1:1000 dilution.