

## ARG65650 anti-DMRT2 antibody

Package: 100 µg  
Store at: -20°C

### Summary

Product Description	Goat Polyclonal antibody recognizes DMRT2
Tested Reactivity	Hu
Predict Reactivity	Ms, Rat, Cow
Tested Application	IHC-P
Specificity	This antibody is expected to recognize isoform 2 only (NP_870987.2). Reported variants NP_001124337.1 and NP_006548.1 represent identical protein
Host	Goat
Clonality	Polyclonal
Target Name	DMRT2
Species	Human
Immunogen	Synthetic peptide around the C-terminus of Human DMRT2 (C-KRPSSAITRVSQ)
Conjugation	Un-conjugated
Alternate Names	Doublesex-like 2 protein; Doublesex- and mab-3-related transcription factor 2; DSXL-2

### Application Instructions

Application table	Application	Dilution
	IHC-P	2 - 4 µg/ml

**Application Note**  
IHC-P: Antigen Retrieval: Steam tissue section in Citrate buffer (pH 6.0).  
\* The dilutions indicate recommended starting dilutions and the optimal dilutions or concentrations should be determined by the scientist.

### Properties

Form	Liquid
Purification	Affinity purification with immunogen.
Buffer	Tris saline (pH 7.3), 0.02% Sodium azide and 0.5% BSA
Preservative	0.02% Sodium azide
Stabilizer	0.5% BSA
Concentration	0.5 mg/ml
Storage instruction	For continuous use, store undiluted antibody at 2-8°C for up to a week. For long-term storage, aliquot and store at -20°C or below. Storage in frost free freezers is not recommended. Avoid repeated freeze/thaw cycles. Suggest spin the vial prior to opening. The antibody solution should be gently mixed before use.
Note	For laboratory research only, not for drug, diagnostic or other use.

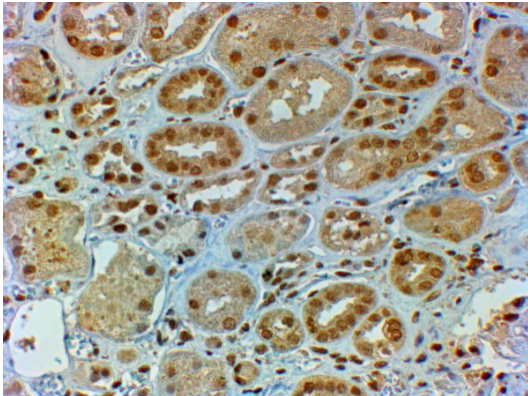
## Bioinformation

---

Database links	<a href="#">GeneID: 10655 Human</a> <a href="#">Swiss-port # Q9Y5R5 Human</a>
Gene Symbol	DMRT2
Gene Full Name	doublesex and mab-3 related transcription factor 2
Background	The protein encoded by this gene belongs to the DMRT gene family, sharing a DM DNA-binding domain with <i>Drosophila</i> 'doublesex' (dsx) and <i>C. elegans</i> mab3, genes involved in sex determination in these organisms. Also, this gene is located in a region of the human genome (chromosome 9p24.3) associated with gonadal dysgenesis and XY sex reversal. Hence this gene is one of the candidates for sex-determining gene(s) on chr 9. [provided by RefSeq, Apr 2010]
Function	Transcriptional activator that directly regulates early activation of the myogenic determination gene MYF5 by binding in a sequence-specific manner to the early epaxial enhancer element of it. Involved in somitogenesis during embryogenesis and somite development and differentiation into sclerotome and dermomyotome. Required for the initiation and/or maintenance of proper organization of the sclerotome, dermomyotome and myotome (By similarity). [UniProt]
Research Area	Gene Regulation antibody
Calculated Mw	62 kDa

## Images

---



ARG65650 anti-DMRT2 antibody IHC image

Immunohistochemistry: paraffin embedded Human Kidney stained with ARG65650 anti-DMRT2 antibody at 2 µg/ml dilution. Steamed antigen retrieval with citrate buffer pH 6, HRP-staining.