

## ARG65439 anti-CD23 antibody [EBVCS-5]

Package: 100 µg  
Store at: -20°C

### Summary

Product Description	Mouse Monoclonal antibody [EBVCS-5] recognizes CD23
Tested Reactivity	Hu
Tested Application	CyTOF®-candidate, FACS, IP
Specificity	The clone EBVCS-5 recognizes an epitope located in the stalk region of human low affinity IgE receptor (CD23) between the 37 and 25 kDa cleavage sites.
Host	Mouse
Clonality	Monoclonal
Clone	EBVCS-5
Isotype	IgG1
Target Name	CD23
Species	Human
Immunogen	EBV-transformed human cells
Conjugation	Un-conjugated
Alternate Names	CD23A; BLAST-2; Lymphocyte IgE receptor; CLEC4J; Immunoglobulin E-binding factor; CD23; IGEBF; Fc-epsilon-RII; CD antigen CD23; FCE2; Low affinity immunoglobulin epsilon Fc receptor; C-type lectin domain family 4 member J

### Application Instructions

Application table	Application	Dilution
	CyTOF®-candidate	Assay-dependent
	FACS	1 - 4 µg/ml
	IP	Assay-dependent
Application Note	* The dilutions indicate recommended starting dilutions and the optimal dilutions or concentrations should be determined by the scientist.	

### Properties

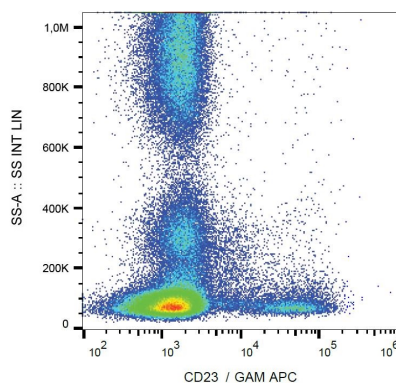
Form	Liquid
Purification	Purified from cell culture supernatant by protein-A affinity chromatography.
Purity	> 95% (by SDS-PAGE)
Buffer	PBS (pH 7.4) and 15 mM Sodium azide
Preservative	15 mM Sodium azide
Concentration	1 mg/ml

Storage instruction	For continuous use, store undiluted antibody at 2-8°C for up to a week. For long-term storage, aliquot and store at -20°C or below. Storage in frost free freezers is not recommended. Avoid repeated freeze/thaw cycles. Suggest spin the vial prior to opening. The antibody solution should be gently mixed before use.
Note	For laboratory research only, not for drug, diagnostic or other use.

## Bioinformation

Database links	<a href="#">GeneID: 2208 Human</a> <a href="#">Swiss-port # P06734 Human</a>
Gene Symbol	FCER2
Gene Full Name	Fc fragment of IgE, low affinity II, receptor for (CD23)
Background	CD23 (Fc epsilon RII), the low affinity IgE receptor, is a 45 kDa type II membrane glycoprotein expressed more or less on eosinophils, follicular dendritic cells, Langerhans cells, mature B cells (mainly upon activation), EBV-transformed lymphoblasts, monocytes, and subpopulation of platelets. A soluble form of 37 kDa and other its fragments were also described. CD23 mediates IgE-dependent cytotoxicity by eosinophils and macrophages, and downregulates IgE secretion in response to high levels of IgE, involving release of pro-inflammatory cytokines.
Function	Low-affinity receptor for immunoglobulin E (IgE) and CR2/CD21. Has essential roles in the regulation of IgE production and in the differentiation of B-cells (it is a B-cell-specific antigen). [UniProt]
Highlight	Related products: <a href="#">CD23 antibodies</a> ; <a href="#">CD23 ELISA Kits</a> ; <a href="#">Anti-Mouse IgG secondary antibodies</a> ; Related news: <a href="#">CyTOF-candidate Antibodies</a>
Research Area	Developmental Biology antibody; Immune System antibody
Calculated Mw	36 kDa
PTM	N- and O-glycosylated. The secreted form sCD23 is produced by ADAM10-mediated ectodomain shedding.

## Images



ARG65439 anti-CD23 antibody [EBVCS-5] FACS image

Flow Cytometry: Human peripheral blood cells stained with ARG65439 anti-CD23 antibody [EBVCS-5], followed by incubation with APC labelled Goat anti-Mouse secondary antibody.